
PRAIRIE VIEW A&M UNIVERSITY 2004-2008 FACT BOOK



A MEMBER OF THE TEXAS A&M
UNIVERSITY SYSTEM

TABLE OF CONTENTS

HISTORICAL STATEMENT	i	
BRIEF CHRONOLOGY	ii	
RECENT EVENTS	iv	
PURPOSE/MISSION STATEMENT	v	
GOALS & OBJECTIVES	vi	
TEXAS A&M UNIVERSITY		
BOARD OF REGENTS	viii	
SYSTEM OFFICES LEADERSHIP	viii	
BOARD OF REGENTS PHOTOS	ix	
PRAIRIE VIEW A&M UNIVERSITY		
OFFICE OF THE PRESIDENT ORGANIZATIONAL CHART	x	
EXECUTIVE OFFICERS.....	xi	
ACADEMIC ADMINISTRATION	xi	
OFFICE OF THE PRESIDENT	xii	
BUSINESS AFFAIRS.....	xii	
ACADEMIC AFFAIRS	xii	
ADMINISTRATION AND AUXILIARY SERVICES	xiii	
RESEARCH AND DEVELOPMENT	xiii	
STUDENT AFFAIRS AND INSTITUTIONAL RELATIONS	xiv	
COOPERATIVE EXTENSION/RESEARCH	xiv	
PVAMU ECONOMIC IMPACT 2008 HIGHLIGHTS.....	xv	
HIGHLIGHTS	xxiii	
ENROLLMENT DATA		
Table/Chart Enr-1	Total Headcount Enrollment, 20 th Day Comparisons fall 2004 - fall 2008	1
Table/Chart Enr-2	Total Student Enrollment by Gender fall 2004 - fall 2008	2
Table/Chart Enr-3	Total Student Enrollment by Ethnicity fall 2004 - fall 2008	3
Table/Chart Enr-4	Undergraduate Student Enrollment by Ethnicity fall 2004 - fall 2008	4

Table/Chart Enr-5	Masters Student Enrollment by Ethnicity fall 2004 - fall 2008	5
Table/Chart Enr-6	Doctoral Student Enrollment by Ethnicity fall 2004 - fall 2008	6
Table/Chart Enr-7	Total Student Enrollment by Age Distribution fall 2004 - fall 2008	7
Table/Chart Enr-8	Average Student Age by Level fall 2004 - fall 2008	8
Table/Chart Enr-9	Total Student Enrollment by Geographical Source fall 2004 - fall 2008	9
Table/Chart Enr-10	First-Time Entering Students by Source fall 2004 - fall 2008	10
Table/Chart Enr-11	Total Student Enrollment by Semester Credit Hour Load fall 2004 - fall 2008	11
Table/Chart Enr-12	Student FTE by Level fall 2004 - fall 2008	12
Table/Chart Enr-13	Total Student Enrollment by Tuition Status fall 2004 - fall 2008	13
Table/Chart Enr-14	Full-Time and Part-Time Student Enrollment by Level Enrollment by Level, fall 2004 - fall 2008	14
Table Enr-15	Top 10 Feeder High Schools/Top 11 College Feeder Institutions...	15
Table Enr-16	Foreign Headcount by Country of Origin	16
SEMESTER CREDIT HOURS		
Table/Chart Sch-1	Total Semester Credit Hours Generated by Level fall 2004 - fall 2008	17
Table/Chart Sch-2	Total Semester Credit Hours Generated On-Campus and Off-Campus fall 2004 - fall 2008	18
Table/Chart Sch-3	Total Semester Credit Hours Generated by Rank of Faculty fall 2004 - fall 2008	19
Table Sch-4	Undergraduate Semester Credit Hours (by Colleges/Departments) fall 2004 - fall 2008	20

Table Sch-5	Masters Semester Credit Hours (by Colleges/Departments) fall 2004 - fall 2008	21
Table Sch-6	Doctoral Semester Credit Hours (by Colleges/Departments) fall 2004 - fall 2008	22
Table Sch-7	Total Semester Credit Hours (by Colleges/Departments) fall 2004 - fall 2008	23

DEGREE PROGRAMS AND DEGREES AWARDED

Table Deg-1	Approved Degree Programs Academic Year 2008-2009	24
Table/Chart Deg-2	Total Degrees Awarded by Level/Gender Academic Years 2003-2004 through 2007-2008.....	29
Table/Chart Deg-3	Total Degrees Awarded by Ethnicity Academic Years 2003-2004 through 2007-2008.....	30
Table Deg-4	Undergraduate and Graduate Degrees Awarded Academic Years 2003-2004 through 2007-2008.....	31

FACULTY DATA

Table Fac-1	Total Faculty Headcount and Full-Time Equivalents fall 2004 - fall 2008	37
Table Fac-2	Total Faculty Headcount by Rank/Ethnicity/Gender fall 2004 - fall 2008	38
Table Fac-3	Total Faculty Headcount by Tenure Status/Teaching Percentage fall 2004 - fall 2008	39
Table/ Fac-4	Tenured Faculty Headcount by Rank/Ethnicity/Gender fall 2004 - fall 2008	40

FISCAL DATA

Chart Fis-1	Current Funds Revenues and Transfers Fiscal Year 2008	41
Chart Fis-2	Current Funds Expenditures and Transfers Fiscal Year 2008	42
Chart Fis-3	Funded Research Expenditures Fiscal Years 2004 through 2008.....	43

STAFF DATA

Table/Chart Staff-1	Total Full-Time Staff by Occupational Activity fall 2004 - fall 2008	44
Table/Chart Staff-2	Total Full-Time Staff by Gender fall 2004 - fall 2008	45
Table/Chart Staff-3	Total Full-Time Staff by Ethnicity fall 2004 - fall 2008	46

LIBRARY DATA

Table/Chart Lib-1	Total Library Holdings Fiscal Years 2003-2004 through 2007-2008	47
Table Lib-2	Library Services Fiscal Years 2003-2004 through 2007-2008	48
Table/Chart Lib-3	Total Library Operating Expenditures Fiscal Years 2003-2004 through 2007-2008	49

FACILITIES DATA

Table Hou-1	Major Campus Buildings fall 2008	50
--------------------	---	----

STAFF DIRECTORY		51
------------------------------	--	----

HISTORICAL STATEMENT

Prairie View A&M University, a member of the Texas A&M University System and the second oldest public institution of higher education in Texas, originated in the Texas Constitution of 1876. Having already established the Agricultural and Mechanical College of Texas (later to be named Texas A&M University) in 1871, legislators pledged in the Texas Constitution of 1876 that "separate schools shall be provided for the white and colored children, and impartial provisions shall be made for both." On August 14, 1876, the Texas Legislature authorized the "Agricultural and Mechanical College of Texas, established for colored youths" and placed responsibility for its management with the Board of Directors of the Agricultural and Mechanical College at Bryan. The Alta Vista College for Colored Youths opened at Prairie View, Texas on March 11, 1878; the school was renamed "Prairie View State Normal School" in 1879.

The Texas Legislature authorized the original curriculum in 1879 to be that of a "Normal School" for the "preparation and training of colored teachers." This curriculum was expanded to include the arts and sciences, home economics, agriculture, mechanical arts, and nursing. The Twentieth Legislature in 1887 added in "the Agriculture & Mechanical Department" to the official school name of Prairie View State Normal School. Prairie View was established as a Land Grant College in 1890 (Second Morrill Act). The four-year senior college program began in 1919.

In 1945, the name of the institution was changed from Prairie View Normal and Industrial College to Prairie View University. In 1947, the Texas Legislature changed the name to Prairie View A&M College of Texas and provided that "courses be offered in agriculture, the mechanics arts, engineering, and the natural sciences connected therewith, together with any other courses authorized at Prairie View at the time of passage of this act, all of which shall be equivalent to those offered at the Agricultural and Mechanical College of Texas at Bryan." On August 27, 1973, the name of the institution was changed to Prairie View A&M University, and its status as an independent unit of the Texas A&M University System confirmed.

In 1983, the Texas Legislature proposed a constitutional amendment to restructure the Permanent University Fund (PUF) to include Prairie View A&M University as a beneficiary of its proceeds. The 1983 amendment also dedicated the University to enhancement as an "institution of the first class" under the governing board of the Texas A&M University System. The constitutional amendment was approved by the voters on November 6, 1984. In January 1985, the Board of Regents of the Texas A&M University System responded to the 1984 Constitutional Amendment by stating its intention that Prairie View A&M University becomes "an institution nationally recognized in its areas of education and research." The Board also resolved that the University receive its share of the Available University Fund.

In March 1999, Office of Civil Rights officials indicated that they had reached a preliminary conclusion that disparities traceable to de jure segregation still existed at Prairie View A&M University. As a result, a select committee in mid-2000 agreed that the university should be enhanced. In 2001, the 77th Texas Legislature approved funding to support the state commitment to the Office of Civil Rights Priority Plan. This additional funding, the "Texas Commitment," allowed the institution to expand its program offerings and construct new buildings. The first Ph.D. student was graduated in December 2004.

A Brief Chronology of Prairie View A&M University

February 1876: Texas State Representative William H. Holland submitted an “act to establish an agricultural and manual school for colored youths of the state.”

August 14, 1876: The Fifteenth Legislature authorized the creation of the “Agricultural and Mechanical College of Texas,” “established for colored youths.”

1877: The state took title to 1,388 acres in Waller County for the site of the college.

March 11, 1878: Alta Vista College for Colored Youth opened with eight students.

1878: L.W. Minor of Mississippi was named the first Principal (1878-1879).

April 19, 1879: The school is renamed “Prairie View State Normal School.” The school is the first coeducational public institution of higher learning in the state.

1885: First diplomas granted.

1887: The Twentieth Legislature added “the Agriculture & Mechanical Department” to the official school name.

1890: The institution became a Land Grant College (Second Morrill Act, 1890).

1899: The institution is renamed Prairie View Normal and Industrial College.

1901: The institution began offering a four-year course of study.

1918: The Prairie View Training School for nurses established.

1919: Four-year senior college program began.

1921: First four-year degree offered.

1930: College of Arts and Sciences established.

1937: Division of graduate studies added.

1939: First Masters degree granted.

1945: Prairie View Normal and Industrial College is renamed Prairie View University.

1947: Prairie View University is renamed Prairie View A&M College of Texas.

1947 - 1948: Dr. E.B. Evans appointed as Principal and subsequently appointed by the Texas A&M University Board of Directors as Prairie View’s first President.

1950: School of Engineering established.

1958: The institution accepted for membership in the Southern Association.

1964: First white students attended Prairie View.

1968: The Navy ROTC program established.

1972: College of Business established (degrees offered since early 1930s).

August 27, 1973: Prairie View A&M College is renamed Prairie View A&M University and is an independent unit of the Texas A&M University System.

1982: Prairie View became a party to the U.S. Dept. of Education's Office of Civil Rights lawsuit.

1983: College of Nursing relocated to Texas Medical Center complex in Houston.

November 6, 1984: A constitutional amendment restructured the state's Permanent University Fund (PUF) to include Prairie View A&M as a beneficiary of its proceeds.

1998: School of Architecture established.

1999: College of Juvenile Justice established.

2000: University College established.

2001: The University's first doctoral program (Ph.D. in Juvenile Justice) offered.

2001: Funding approved by 77th Texas Legislature to support state commitment to Office of Civil Rights (OCR) Priority Plan.

July 2002: "Land-Grant institution by federal statute" added to Mission Statement.

2003: Dr. George C. Wright named as the seventh president of Prairie View.

December 2004: First Ph.D. awarded (Juvenile Justice).

Note: For additional historical information about the institution, see Prairie View A Study in Public Conscience 1878-1945 by George Ruble Woolfolk (NY: Pageant Press, 1962).

Recent Events
Fall 2007 – Spring 2009

Fall 2007: Record enrollment of 8,382 students.

August 2007: Memorial Student Center dedicated for PVAMU alumnus Willie Albert Tempton, Sr.

September 2008: PVAMU partnered with Lone Star College-CyFair.

October 2008: Lafayette High School (Lexington, Ky.) Class of 1968 Scholarship named in honor of President George C. Wright.

December 2008: Extend the View capital campaign surpasses goal of \$30 million goal.

January 2009: Marching Storm Band leads Tournament of Roses Parade, Pasadena, CA.

January 2009: PVAMU students attend President Barack Obama's inauguration in Washington, D.C.

January 2009: Campus featured in National HBCU Calendar.

February 2009: PVAMU's Society of Women Engineers co-hosted Regional Conference for first time.

March 2009: PVAMU alumnus honored with naming of the Don Clark School of Juvenile Justice and Psychology and Texas Crime Prevention Center Building.

March 2009: PVAMU Lady Panthers advance to the NCAA Women's Basketball Tournament after winning both the Southwestern Athletic Conference regular season championship and conference tournament.

April 2009: PVAMU's College of Engineering named in honor of alumnus Roy G. Perry.

PURPOSE STATEMENT

The State of Texas, through amendment of the State Education Code (Section 87.104) 2001, provides the following university purpose:

Section 87.104. PURPOSE OF THE UNIVERSITY. In addition to its designation as a statewide general purpose institution of higher education and its designation as a land-grant institution, Prairie View A&M University is designated as a statewide special purpose institution of higher education for instruction, research, and public service programs dedicated to:

- (1) enabling students of diverse economic, ethnic, and cultural backgrounds to realize their full potential;
- (2) assisting small and medium-sized communities to achieve their optimal growth and development; and
- (3) assisting small and medium-sized agricultural, business, and industrial enterprises to manage their growth and development effectively.

Added by Acts 1981, 67th Leg., p. 3040, ch. 795, § 1, eff. June 17, 1981. Amended by Acts 2001, 77th Leg., ch. 47, § 1, eff. May 3, 2001.

MISSION STATEMENT

Revised-October 2005

Prairie View A&M University is dedicated to excellence in teaching, research and service. It is committed to achieving relevance in each component of its mission by addressing issues and proposing solutions through programs and services designed to respond to the needs and aspirations of individuals, families, organizations, agencies, schools, and communities--both rural and urban. Prairie View A&M University is a state-assisted institution by legislative designation, serving a diverse ethnic and socioeconomic population, and a land-grant institution by federal statute.

Having been designated by the Texas constitution as one of the three "institutions of the first class" (1984), the University is committed to preparing undergraduates in a range of careers including but not limited to engineering, computer science, natural sciences, architecture, business, technology, criminal justice, the humanities, education, agricultural sciences, nursing, mathematics, and the social sciences. It is committed to advanced education through the master's degree in education, engineering, natural sciences, nursing, selected social sciences, agriculture, business, and human sciences. It is committed to expanding its advanced educational offerings to include multiple doctoral programs.

Though the University's service area has generally extended throughout Texas and the world, the University's target service area for offering undergraduate and graduate programs of study includes the Texas Gulf Coast Region; the rapidly growing residential and commercial area known as the Northwest Houston Corridor; and urban Texas centers likely to benefit from Prairie View A&M University's specialized programs and initiatives in nursing, juvenile justice, architecture, education, and social work.

The University's public service programs offered primarily through the Cooperative Extension Program target the State of Texas, both rural and urban counties. The University's research foci include extending knowledge in all disciplines offered and incorporating research-based experiences in both undergraduate and graduate students' academic development.

Prairie View A&M University
Goals and Objectives for the Next Five Years
April 27, 2005

1. Strengthen the Quality of Academic Programs
 - ◆ Conduct external academic program reviews
 - ◆ Achieve specialized accreditation of selected academic programs
 - ◆ Succeed in achievement of Licensures in applicable academic program areas
 - ◆ Eliminate non-productive academic programs
 - ◆ Increase the prominence of faculty scholarship
 - ◆ Increase the number of faculty FTE's producing research/scholarly and creative works
 - ◆ Retain regional accreditation
 - ◆ Retain accreditation held in specialized programs

2. Improve the Academic Indicators of the Student Body
 - ◆ Conduct annual reviews of admission standards/requirements
 - ◆ Increase/improve the standardized test scores of matriculates
 - ◆ Collaborate with Texas' other educational programs to increase the number and success of transfer students
 - ◆ Admit and enroll an increasingly higher caliber of student
 - ◆ Increase the number of students who adhere to the University's Conduct Standards

3. Increase Applied and Basic Research
 - ◆ Enhance the research environment and expertise of faculty and staff
 - ◆ Align university research goals with federal, state, and industry needs and goals
 - ◆ Enhance pre- and post-award services to the university research and sponsored program community

4. Strengthen Environmental Health and Safety Programs on the Campus
 - ◆ Implement off-site storage of critical data
 - ◆ Prepare and train for business continuity

5. Achieve (and maintain) Financial Stability
 - ◆ Expand the financial capacity of PVAMU
 - ◆ Address potentially critical funding issues involved with the eventual loss of special OCR Priority Plan funding
 - ◆ Meet or exceed expectations associated with the current Capital Campaign
 - ◆ Take appropriate steps to "right-size" the annual operating budget of PVAMU
 - ◆ Increase the availability of scholarship funds
 - ◆ Increase the size and number of endowments for student scholarships and for academic chairs
 - ◆ Increase funded research
 - ◆ Stay competitive in tuition and fees/align tuition and fees to be competitive with other general academic institutions in Texas

6. Increase the Efficiency of University Operations
 - ◆ Design and implement a document imaging program
 - ◆ Identify additional outsourcing opportunities
 - ◆ Improve the quality of support staff
 - ◆ Transfer fiscal processes to online applications

- ◆ Maximize space usage
7. Promote Programs that Contribute to Student Success
 - ◆ Engage students in rigorous educational programs and provide an environment conducive to success
 - ◆ Increase/improve the percentage of PVAMU graduates who are accepted to graduate and/or professional schools
 - ◆ Increase placement rates of all PVAMU graduates
 8. Strengthen University Advancement Programs including Fund-Raising
 - ◆ Communicate the accomplishments of the University through publications to the various constituent groups.
 - ◆ Enhance corporate relations through Industry Cluster publications that show the strength of corporate partnerships with the University.
 - ◆ Use technology to communicate the University's accomplishments to a broader audience
 - ◆ Continue to implement the fund-raising model and university advancement model developed from the planning study and refined by Ketchum's progress reviews of Extend the View: The Capital Campaign for Prairie View A&M University.
 9. Increase and Enhance the Visibility and Awareness of the University to the Community at Large/all Stakeholders
 - ◆ Effectively communicate to all Stakeholders the PVAMU Vision/2020
 - ◆ Expand its service to the community by promoting Service Learning, Distance Education, Continuing Education, IK-16 programs, Small Business and Entrepreneurial Initiatives, Cooperative Extension, and Health Care by engaging its people and resources in a renewed commitment to outreach
 - ◆ Improve the climate for diversity
 10. Strengthen the Quality of the Athletics Program (Added as of Fall 2007)
 - ◆ Increase revenues
 - ◆ Request fee increase to offset increased operational costs
 - ◆ Increase on-line services
 - ◆ Increase fan participation/attendance
 - ◆ Increase Development and Fund-raising revenue
 - ◆ Increase HUB spending
 - ◆ Expand student athlete exposure to service learning
 - ◆ Create energy conservation and increase public service involvement
 - ◆ Strengthen academic advisement and tutor/mentor program
 - ◆ Increase available scholarships for student athletes
 - ◆ Improve quality of athletic facilities and playing environment

THE TEXAS A&M UNIVERSITY SYSTEM

Board of Regents

Morris E. Foster , Belton (<i>Chairman</i>)	term expires February 1, 2013
James P. Wilson , Sugarland (<i>Vice Chairman</i>).....	term expires February 1, 2015
Lupe Fraga , Sugarland	term expires February 1, 2011
Gene Stallings , Powderly	term expires February 1, 2011
Ida Clement Steen , San Antonio	term expires February 1, 2011
Richard A. Box , Austin	term expires February 1, 2013
Phil Adams , Bryan/College Station	term expires February 1, 2015
Bill Jones , Austin	term expires February 1, 2015
Jim Schwertner , Austin.....	term expires February 1, 2015

As of May 21, 2009

System Offices Leadership

Chancellor	Michael D. McKinney
Associate Vice Chancellor and Treasurer	Gregory R. Anderson
Vice Chancellor for Academic Affairs	Frank B. Ashley, III
Vice Chancellor for Governmental Relations	Stanton C. Calvert
Associate Vice Chancellor for Information Technology	Pierce Cantrell
Associate Vice Chancellor for Budgets and Accounting	B. J. Crain
Manager of Communications Media	Rod Davis
Vice Chancellor for Fed. Rel. & Tech. Commercialization	Guy K. Diedrich
Associate Vice Chancellor for Facilities Planning & Const.	Vergel Gay
Interim General Counsel	Scott Kelly
Executive Director for Facilities Planning & Construction	Timothy E. Donathen
Vice Chancellor for Research	Brett P. Giroir
Chief of Staff	Chief of Staff
Chief Auditor	Chief Auditor

As of May 1, 2009

For additional information on the Texas A&M University System, refer to: <http://sago.tamu.edu>

Texas A&M University

Board of Regents, As of May 21, 2009



Morris E. Foster,
Chairman
Belton
Term Exp. 2/1/2013



James P. Wilson,
Vice Chairman
Sugarland
Term Exp. 2/1/2015



Lupe Fraga
Board Member
Sugarland
Term Exp. 2/1/2011



Gene Stallings
Board Member
Powderly
Term Exp. 2/1/2011



Ida Clement Steen
Board Member
San Antonio
Term Exp. 2/1/2011



Richard A. Box
Board Member
Austin
Term Exp. 2/1/2013



Phil Adams,
Board Member
Bryan/College Station
Term Exp. 2/1/2015



Bill Jones,
Board Member
Austin
Term Exp. 2/1/2015



Jim Schwertner
Board Member
Austin
Term Exp. 2/1/2015

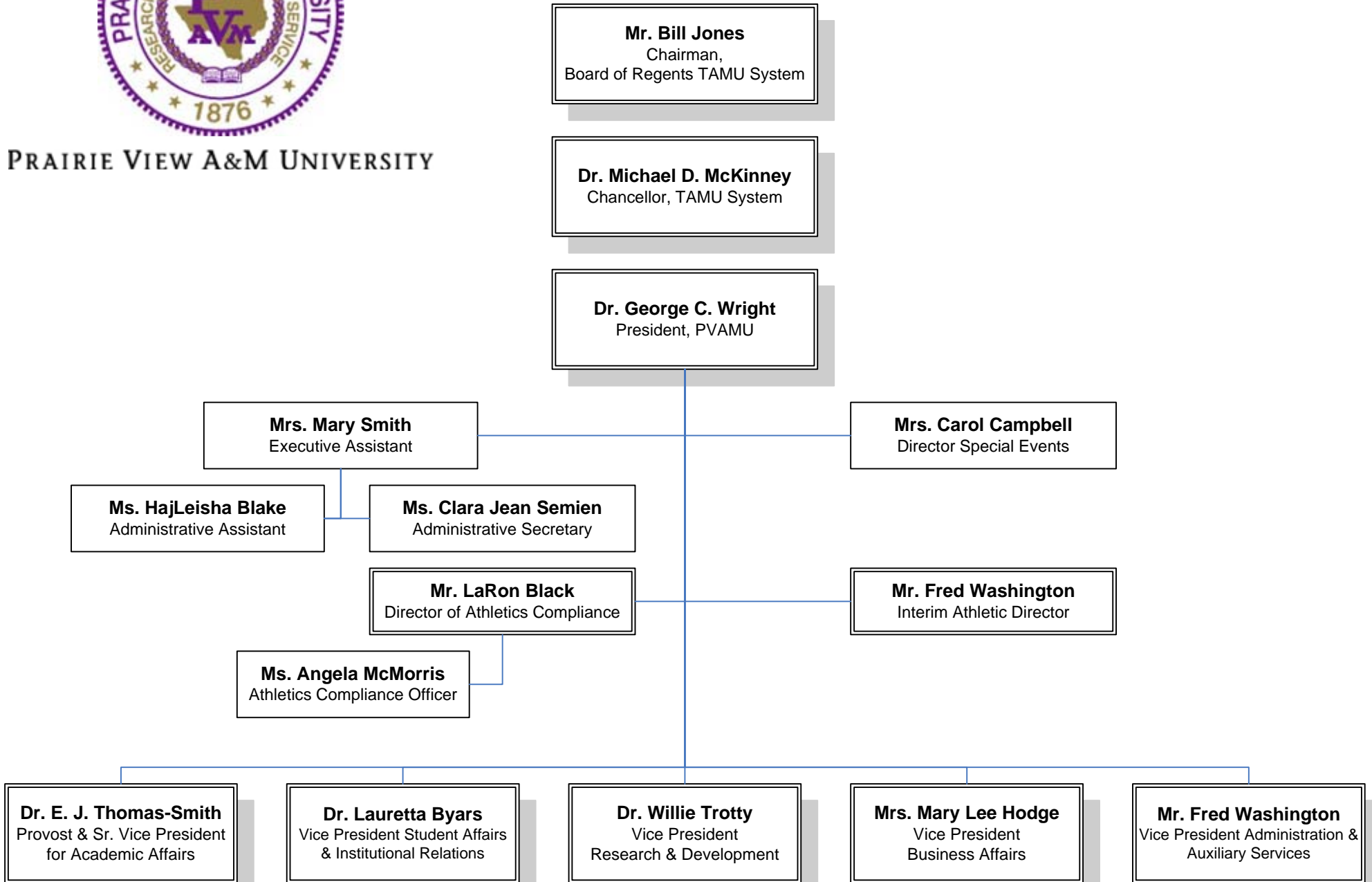


PRAIRIE VIEW A&M UNIVERSITY

Office of The President

Organizational
Chart

www.pvamu.edu



PRAIRIE VIEW A&M UNIVERSITY

Executive Officers

- George C. Wright** President
- E. Joahanne Thomas-Smith** Provost and Sr. Vice President, Academic Affairs
- Mary Lee Hodge** Vice President, Business Affairs
- Willie F. Trotty** Vice President, Research and Development
- Lauretta Byars** Vice President, Institutional Relations & Public Services
- Fred Washington** Vice President, Administration & Auxiliary Services

Academic Administration

- Freddie Richards** Dean, College of Agriculture and Human Sciences
- Danny Kelley** Dean, College of Arts and Sciences
- Munir Quddus** Dean, College of Business
- Lucian Yates III** Dean, College of Education
- Kendall T. Harris** Dean, College of Engineering
- Betty Adams** Dean, College of Nursing
- Ikhlas Sabouni** Dean, School of Architecture
- H. Elaine Rodney** Dean, School of Juvenile Justice and Psychology
- William H. Parker** Dean, Graduate School
- Lettie A. Raab** Executive Director, University College
- Gwendolyn Toney** Director, University Scholars Program
- Dennis E. Daniels**..... Director, Undergraduate Medical Academy

ADMINISTRATIVE STAFF

Office of the President

Mary Smith.....Executive Assistant
 Carol B. Campbell..... Director, Special Events
 Fred Washington Director, Athletics

Business Affairs

Mary Lee Hodge.....Vice President, Business Affairs and Chief Financial Officer
 Rod Mireles Assistant Vice President, Financial Accounting, Reporting & Procurement
 Marilyn Maynard Assistant Vice President, Financial Services
 Albert R. Gee Assistant Vice President, Human Resources
 Radhika Ayyar Director, Employee Services
 Dean Williamson Director, Institutional Research
 Betty Ricks Director, Budget and Reconciliation
 Jay S. Abbt Director, Environmental Health & Safety
 Larry RaabDirector, Planning and Space Management
 Richard Norton Assistant Vice President, Physical Plant
 Luis-Pablo Grijalva..... Chief Information Officer, Information Technology
 Christa M. Molloy..... Project Manager & Information Security Officer
 Lydia Cavanaugh Manager, Compliance
 Midhat Ashgar..... Project Manager and Webmaster
 Jim NelmsCoordinator, Historically Underutilized Business

Academic Affairs

E. Joahanne Thomas-Smith Provost and Sr. Vice President, Academic Affairs
 Michael McFrazier Associate Provost, Academic Affairs

Don ByarsAssociate Provost, Enrollment Management
Carlos B. Clark Assistant Provost, Student Financial Aid
Mark Pearson Executive Director, Enrollment Management Services
Rosie Albritton Director, John B. Coleman Library
John Williams Director, Distance Learning
Mary Gooch Director, Undergraduate Admissions
Laurette Foster Coordinator, Center for Teaching Excellence

Administration and Auxiliary Services

Fred Washington Vice President, Administration & Auxiliary Services
Tressey Wilson Assistant Vice President, Auxiliary Services
Anitra Phelps-Addison Director, Auxiliary Support Services
Algray Pettus.....Chief of Police
Thelma J. Pierre Administrator, Dept. of Health and Counseling Services
Cheryl Granger-Brooks..... Manager, KPVU

Research and Development

Willie F. Trotty..... Vice President, Research and Development
Elizabeth Noel Associate Vice President, Research
Lora Williams.....Director, Title III
Hortense KilpatrickDirector, Alumni Affairs
Nelson BowmanDirector, Development
Robert T. EffingerAdministrator, Research Foundation
Ann Craddock..... Manager, Office of Sponsored Programs
Richard T. Wilkins..... Director, Center for Applied Radiation Research
Kelvin K. KirbyDeputy Director, Center for Applied Radiation Research

Student Affairs and Institutional Relations

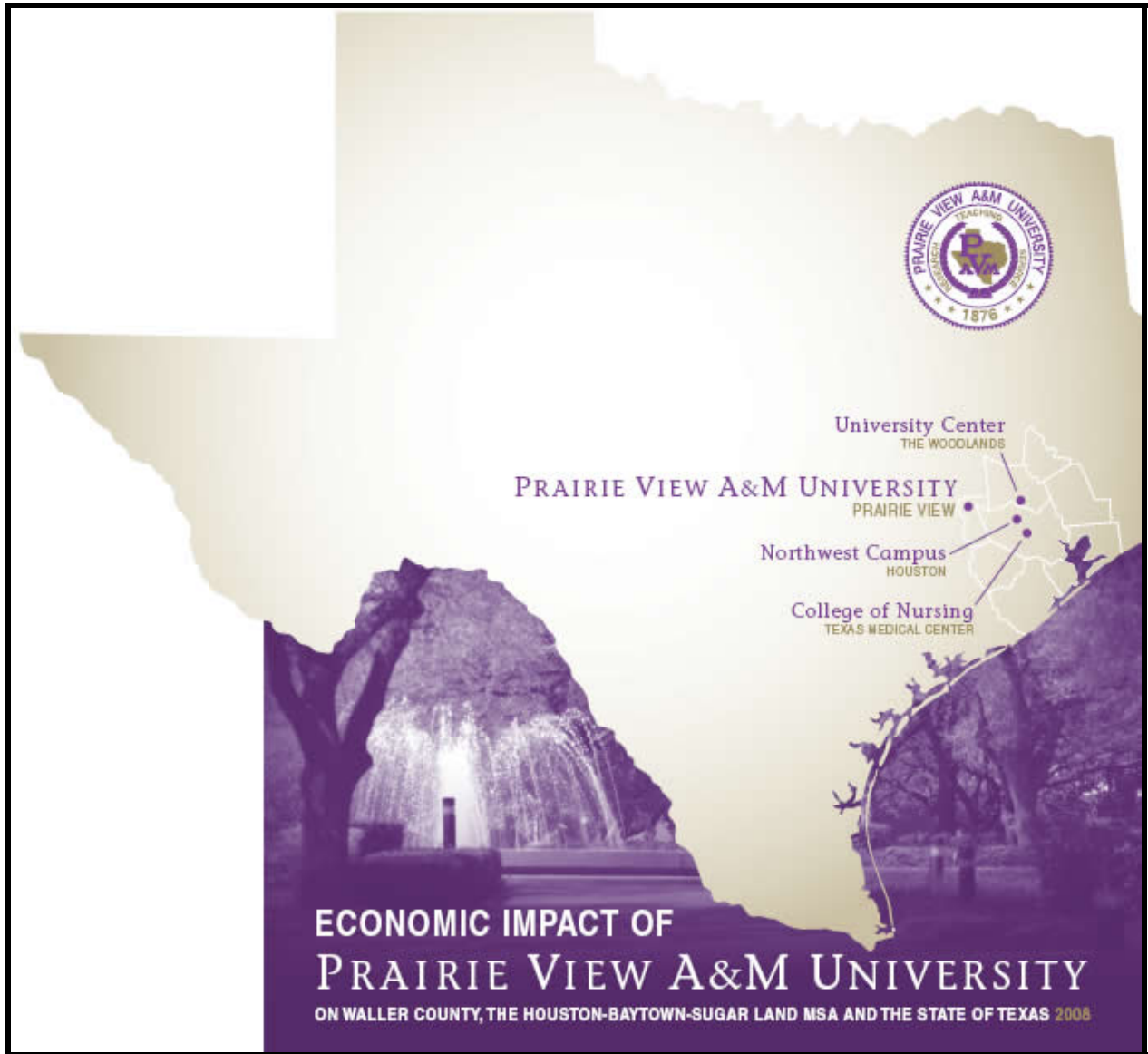
Lauretta Byars Vice President, Institutional Relations and Public Service
Miron P. Billingsley Associate Vice President, Student Affairs
Sheleah D. Hughes Director, Public Relations
Elma De-Luna Gonzalez..... Director, Multicultural Affairs
Glenda Jones..... Director, Career and Outreach Services
Kay Norman.....Director, Student Services
Frank D. Jackson Governmental Affairs Officer
Charles H. Lewter IV..... Dean, All Faiths Chapel
Renee Williams..... Equal Opportunity Officer

Cooperative Extension/Research

Nelson Daniels Associate Administrator, Cooperative Extension Program
Alfred I. Parks..... Research Director, Cooperative Agriculture Research

For additional information on Prairie View A&M University, refer to: <http://www.pvamu.edu>

All positions effective May 15, 2009



The Economic Impact of Prairie View A&M University on Waller County

For every 1,000 students, the total benefit is \$16.34 million and 166 full-time jobs.

Direct Benefit to Waller County: \$114,724,588 annually

The direct benefit of PVAMU to Waller County economy is estimated at \$114.72 million per year.

- \$66.44 million in faculty & staff wages and salaries
- \$12.25 million in other institutional spending
- \$25.54 million in spending by undergraduate students
- \$7.63 million in spending by graduate students
- \$2.86 million in spending by visitors to the University

Total Benefit to Waller County: \$136,987,604 annually

The total economic benefit of PVAMU to Waller County economy is estimated at \$136.98 million annually.

- \$114.72 million in direct benefit
- \$22.26 million in secondary benefits

Employment Benefit to Waller County: 1,395 full-time jobs

PVAMU supports a total of 1,395 full-time jobs in Waller County.

- 353 Waller County residents are employed full time (excluding student workers) by the university
- 1,042 additional full-time jobs are generated by university related activities.

Lifetime Earnings Benefit of 2008 Graduates to Waller County: \$96,242,179

Based on the gains in lifetime earning streams from a university degree, the University contributes \$96.24 million in additional lifetime earnings to 2008 graduates who reside in Waller County.

- \$47.84 million is contributed to graduates with Bachelor's degrees
- \$46.60 million is contributed to graduates with Master's degrees
- \$1.80 million is contributed to graduates with Doctorate degrees

**The numbers presented in this report are derived from an economic impact study titled *The 2008 Economic Impact of Prairie View A&M University on Waller County, the Houston-Baytown -Sugar Land MSA, and the State of Texas*. The study used FY 2008 data and was conducted by Dr. Munir Quddus, Dr. Sonja Langley, Dr. Michael Williams, and Dr. Rahim Quazi, College of Business, Prairie View A&M University.

**The Economic Impact of Prairie View A&M University on the Greater Houston Region
(Houston-Baytown -Sugar Land Metropolitan Statistical Area)**

For every 1,000 students, the total benefit is \$44.78 million and 310 full-time jobs.

Direct Benefit to the Greater Houston Region: \$220,293,633 annually

The direct benefit of PVAMU to the Greater Houston Region economy is estimated at \$220.29 million per year.

- \$66.44 million in faculty & staff wages and salaries
- \$35.21 million in other institutional spending
- \$57.86 million in spending by undergraduate students
- \$48.61 million in spending by graduate students
- \$12.17 million in spending by visitors to the University

Total Benefit to the Greater Houston Region: \$375,385,917 annually

The total economic benefit of PVAMU to the Greater Houston Region economy is estimated at \$375.38 million annually.

- \$220.29 million in direct benefit
- \$155.09 million in secondary benefits

Employment Benefit to the Greater Houston Region: 2,595 full-time jobs

PVAMU supports a total of 2,595 full-time jobs in the Greater Houston Region.

- 614 residents in the Greater Houston Region are employed full time (excluding student workers) by the university
- 1,981 additional full-time jobs are generated by university related activities

Lifetime Earnings Benefit of 2008 Graduates to Greater Houston Region: \$677,292,675

Based on the gains in lifetime earning streams from a university degree, the University contributes \$677.30 million in additional lifetime earnings to 2008 graduates who reside in the Greater Houston Region.

- \$270.90 million is contributed to graduates with Bachelor's degrees
- \$391.29 million is contributed to graduates with Master's degrees
- \$15.11 million is contributed to graduates with Doctorate degrees

Note: The Houston-Baytown -Sugar Land MSA includes 10 counties: Austin, Brazoria, Chambers, Fort Bend, Galveston, Harris, Liberty, Montgomery, San Jacinto, and Waller.

The Economic Impact of Prairie View A&M University on the State of Texas

For every 1,000 students, the total benefit is \$57.30 million and 388 full-time jobs.

Direct Benefit to Texas: \$257,104,217 annually

The direct benefit of PVAMU to Texas economy is estimated at \$257.10 million per year.

- \$66.44 million in faculty & staff wages and salaries
- \$52.11 million in other institutional spending
- \$70.82 million in spending by undergraduate students
- \$55.56 million in spending by graduate students
- \$12.17 million in spending by visitors to the University

Total Benefit to Texas: \$480,257,369 annually

The total economic benefit of PVAMU to Texas economy is estimated at \$480.25 million annually.

- \$257.10 million in direct benefit
- \$223.15 million in secondary benefits

Employment Benefit to Texas: 3,256 full-time jobs

PVAMU supports a total of 3,256 full-time jobs in Texas.

- 1,065 Texas residents are employed full time (excluding student workers) by the university
- 2,191 additional full-time jobs are generated by university related activities

Lifetime Earnings Benefit of 2008 Graduates to Texas: \$1,322,661,599

Based on the gains in lifetime earning streams from a university degree, the University contributes \$1.32 billion in additional lifetime earnings to 2008 graduates who reside in Texas.

- \$542.41 million is contributed to graduates with Bachelor's degrees
- \$751.24 million is contributed to graduates with Master's degrees
- \$29.00 million is contributed to graduates with Doctorate degrees

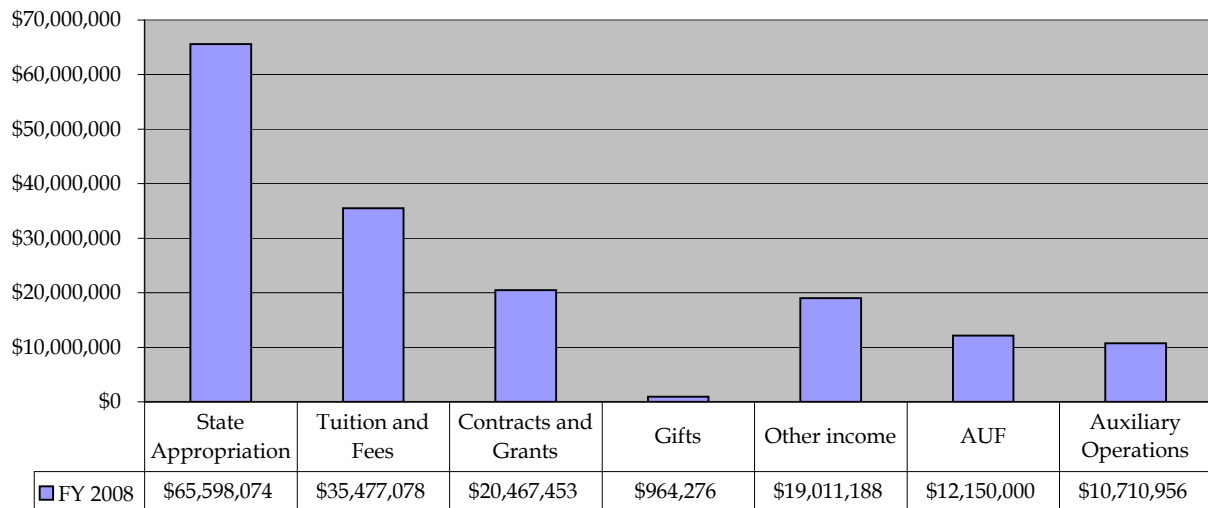
PVAMU Sources of Revenue FY 2008

FY 2008

State Appropriations	\$65,598,074
Tuition and Fees	\$35,477,078
Contracts and Grants	\$20,467,453
Gifts	\$964,276
Other income	\$19,011,188
AUF	\$12,150,000
Auxiliary Operations	\$10,710,956
Total	\$164,379,025

Source: PVAMU Comptroller's office

FY 2008



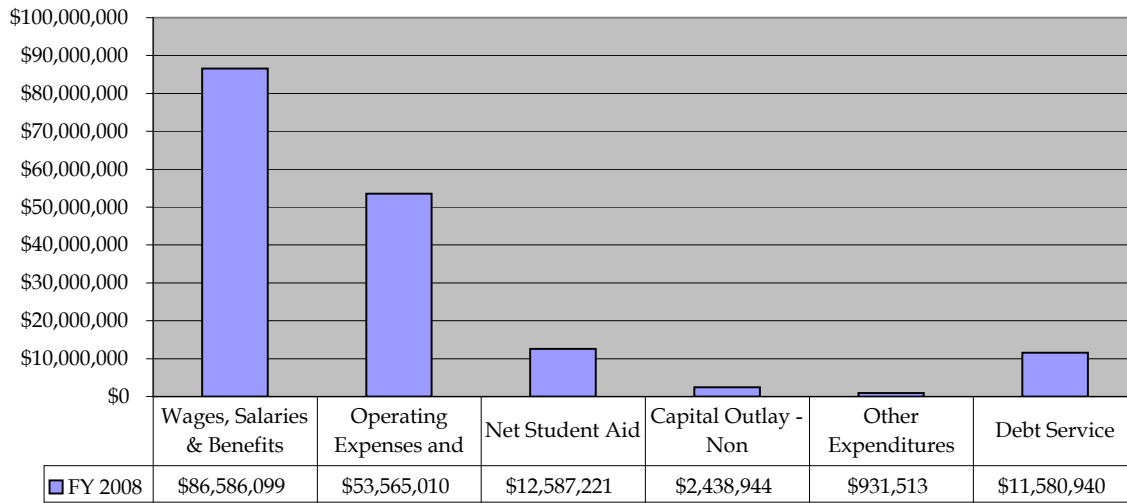
PVAMU Expenditures FY 2008

FY 2008

Wages, Salaries & Benefits	\$86,586,099
Operating Expenses and Equipme	\$53,565,010
Net Student Aid	\$12,587,221
Capital Outlay - Non construction	\$2,438,944
Other Expenditures	\$931,513
Debt Service	\$11,580,940
Total	\$167,689,727

Source: PVAMU Comptroller's office

FY 2008



The State of Texas

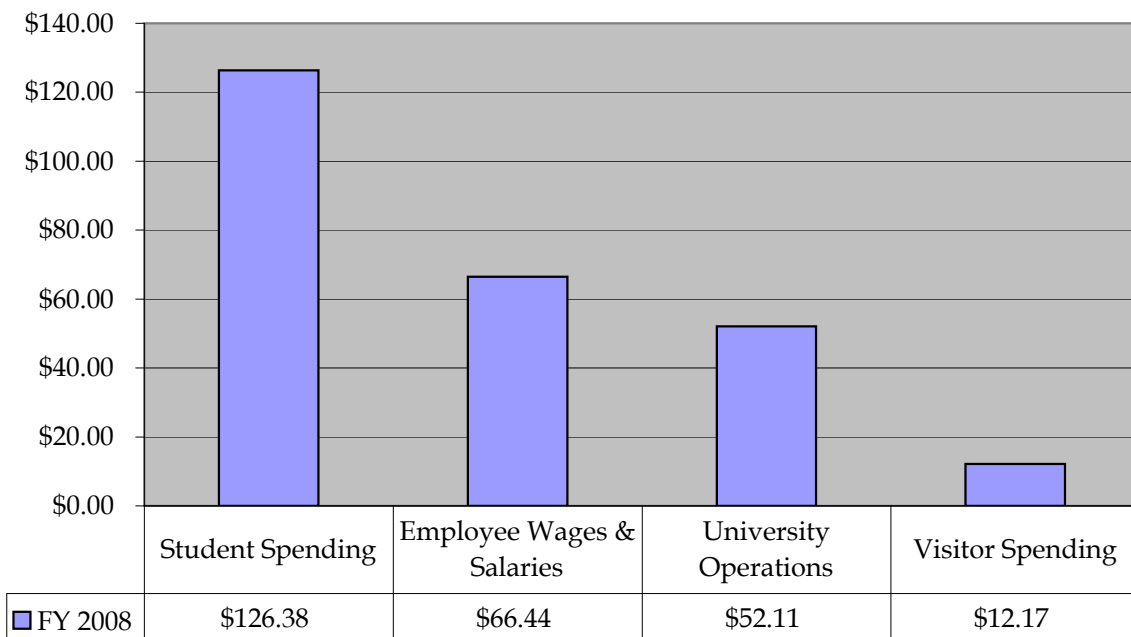
Direct Benefit FY 2008 (millions of \$)

FY 2008

Student Spending	\$126.38
Employee Wages & Salaries	\$66.44
University Operations Spending	\$52.11
Visitor Spending	\$12.17
Total	\$257.10

Source: Calculations based on data provided by the University, sutors' assumptions (following other studies), and the IMPLAN multipliers

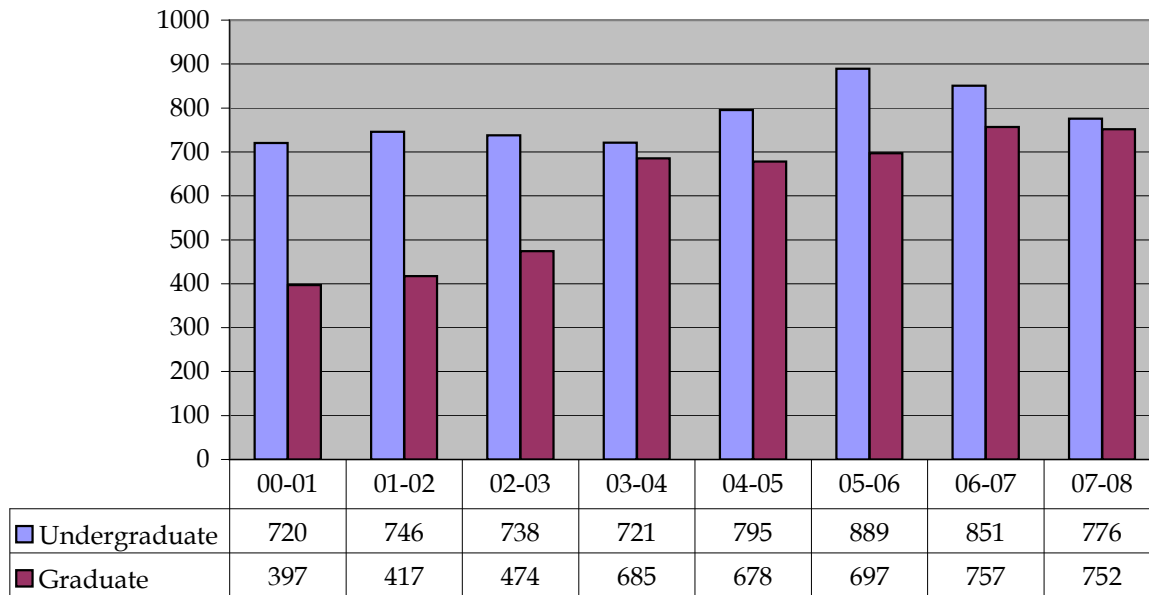
FY 2008



Degrees Awarded by Level

	00-01	01-02	02-03	03-04	04-05	05-06	06-07	07-08
Undergraduate	720	746	738	721	795	889	851	776
Graduate	397	417	474	685	678	697	757	752
Total	1,117	1,163	1,212	1,406	1,473	1,586	1,608	1,528

AY 2000 - AY 2007



PRAIRIE VIEW A&M UNIVERSITY
HEADCOUNT ENROLLMENTS

PVAMU Fact Book 2004-2008

20th day comparisons

Fall 2004, Fall 2005, Fall 2006, Fall 2007, Fall 2008

	20 th day Certified FALL 2004		20 th day Certified FALL 2005		20 th day Certified FALL 2006		20 th day Certified FALL 2007		20 th day Certified FALL 2008	
Undergraduate:										
Freshman	2,393	28.66%	1,773	22.41%	1,894	23.66%	2,057	24.54%	2,121	25.30%
<i>First-time Freshmen</i>	1,473		1,101		1,231		1,322		1,294	
Sophomore	1,259	15.08%	1,234	15.60%	1,168	14.59%	1,162	13.86%	1,368	16.32%
Junior	1,076	12.89%	1,043	13.18%	1,142	14.26%	1,127	13.45%	1,064	12.69%
Senior	1,400	16.77%	1,510	19.08%	1,462	18.26%	1,592	18.99%	1,625	19.39%
Undergraduate Subtotal:	6,128		5,560		5,666		6,118		6,178	
Post-Bacc	196	2.35%	142	1.79%	147	1.84%	180	2.15%	100	1.19%
Grad-Masters	1,966	23.54%	2,121	26.81%	2,081	25.99%	2,157	25.73%	1,833	21.87%
Grad-Doctorate	60	0.72%	89	1.12%	112	1.40%	107	1.28%	92	1.10%
Gender*										
Male	3,377	40.44%	3,029	38.28%	3,094	38.65%	3,195	38.12%	3,181	37.95%
Female	4,973	59.56%	4,883	61.72%	4,912	61.35%	5,187	61.88%	5,022	59.91%
Ethnicity										
White	379	4.54%	398	5.03%	333	4.16%	304	3.63%	328	3.91%
Black	7,492	89.72%	7,008	88.57%	7,121	88.95%	7,442	88.79%	7,136	85.13%
Hispanic	238	2.85%	252	3.19%	257	3.21%	318	3.79%	331	3.95%
Asian	83	0.99%	74	0.94%	104	1.30%	134	1.60%	151	1.80%
Amer Indian/Alaskan	8	0.10%	11	0.14%	14	0.17%	12	0.14%	13	0.16%
International ¹	136	1.63%	160	2.02%	149	1.86%	147	1.75%	143	1.71%
Unknown	14	0.17%	9	0.11%	28	0.35%	7	0.08%	101	1.20%
Residence										
In-State	7,778	93.15%	7,324	92.57%	7,425	92.74%	7,767	92.66%	7,607	90.75%
Out-of-State	423	5.07%	421	5.32%	426	5.32%	448	5.34%	449	5.36%
International ²	149	1.78%	167	2.11%	155	1.94%	167	1.99%	147	1.75%
TOTAL	8,350		7,912		8,006		8,382		8,203	
Enrollment % Increase	7%		-5.2% dec.		1.2% inc.		4.7% inc.		-2.1% dec.	
SCH / % Increase	103,658	7.7% inc.	96,085	-7.3% dec.	96,364	0.3% inc.	100,785	4.6% inc.	99,619	-1.2% dec.

Total Student Enrollment by Gender

Fall 2004 - Fall 2008

Table Enr-2 Total Enrollment

GENDER	FALL SEMESTERS				
	2004	2005	2006	2007	2008
	(N) (%)	(N) (%)	(N) (%)	(N) (%)	(N) (%)
Male	3,377 40	3,029 38	3,094 39	3,195 38	3,181 39
Female	4,973 60	4,883 62	4,912 61	5,187 62	5,022 61
TOTALS	8,350	7,912	8,006	8,382	8,203

Undergraduate

GENDER	FALL SEMESTERS				
	2004	2005	2006	2007	2008
	(N) (%)	(N) (%)	(N) (%)	(N) (%)	(N) (%)
Male	2,800 33	2,430 31	2,522 31	2,634 31	2,674 33
Female	3,524 42	3,272 41	3,291 41	3,484 42	3,604 44
TOTALS	6,324	5,702	5,813	6,118	6,278

Masters

GENDER	FALL SEMESTERS				
	2004	2005	2006	2007	2008
	(N) (%)	(N) (%)	(N) (%)	(N) (%)	(N) (%)
Male	549 7	562 7	530 7	524 6	479 6
Female	1,417 17	1,559 20	1,551 19	1,633 19	1,354 17
TOTALS	1,966	2,121	2,081	2,157	1,833

Doctoral

GENDER	FALL SEMESTERS				
	2004	2005	2006	2007	2008
	(N) (%)	(N) (%)	(N) (%)	(N) (%)	(N) (%)
Male	28 0	37 0	42 1	37 0	28 0
Female	32 1	52 1	70 1	70 1	64 1
TOTALS	60	89	112	107	92

Note: Each category (for example, doctoral female) is a percent of the total enrollment.

Source: Texas Higher Education Coordinating Board - PREP Online

Total Student Enrollment By Ethnicity Fall 2004 - Fall 2008

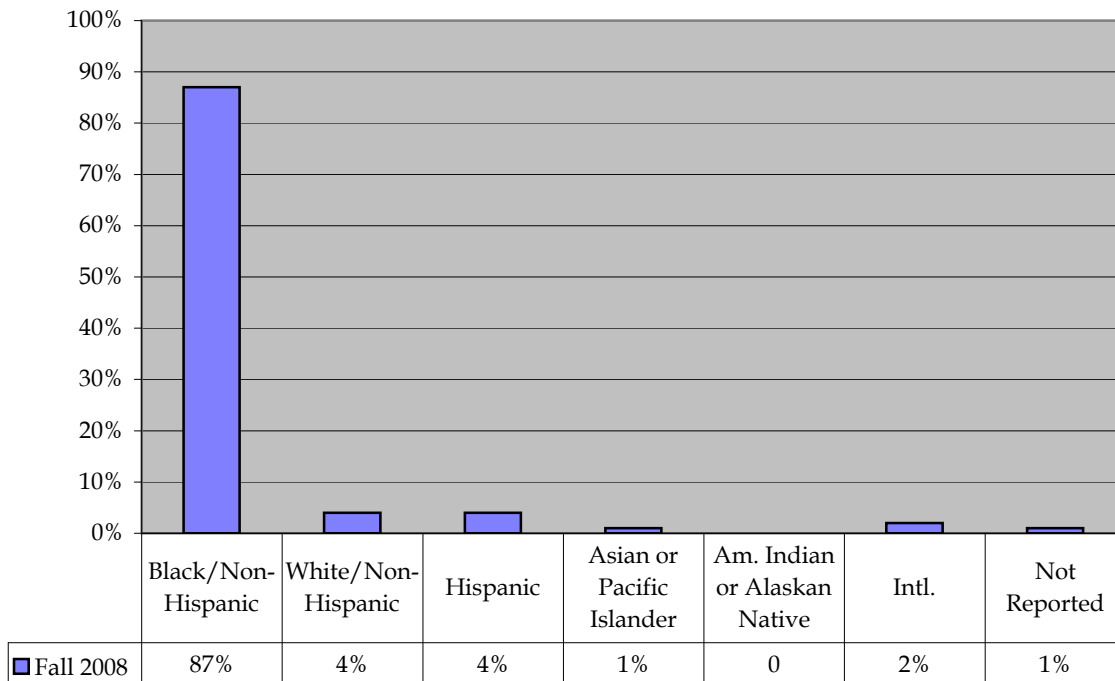
Table/Chart Enr-3

ETHNICITY	FALL SEMESTERS				
	2004	2005	2006	2007	2008
Black/Non-Hispanic	7,492 90	7,008 89	7,121 89	7,442 89	7,136 87
White/Non-Hispanic	379 5	398 5	333 4	304 4	328 4
Hispanic	238 3	252 3	257 3	318 4	331 4
Asian or Pacific Islander	83 1	74 1	104 1	134 2	151 1
Am. Indian or Alaskan Native	8 *	11 *	14 *	12 *	13 *
International	136 2	160 2	149 2	147 2	142 2
Unknown/Not Reported	14 *	9 *	28 *	25 *	102 1
TOTALS	8,350	7,912	8,006	8,382	8,203

* Denotes less than one percent. Percent columns show rounded figures and may not total 100%.

Source: Texas Higher Education Coordinating Board - PREP Online

Fall 2008



Undergraduate Student Enrollment By Ethnicity Fall 2004 - Fall 2008

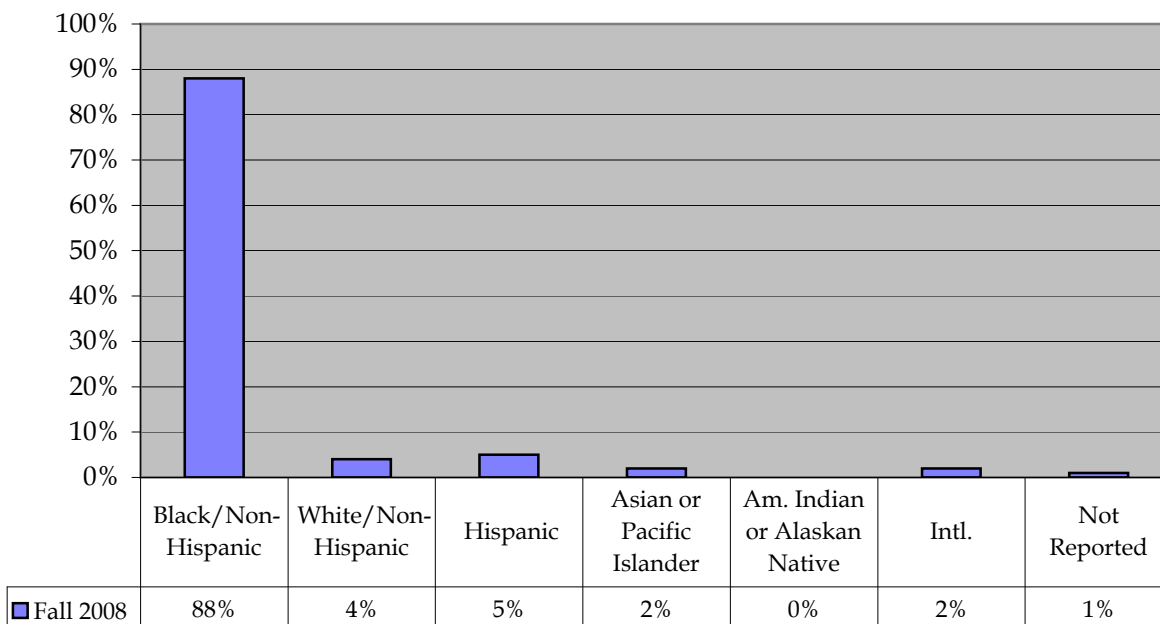
Table/Chart Enr-4

ETHNICITY	FALL SEMESTERS									
	2004		2005		2006		2007		2008	
	(N)	(%)	(N)	(%)	(N)	(%)	(N)	(%)	(N)	(%)
Black/Non-Hispanic	5,795	92	5,130	90	5,248	90	5,490	90	5,544	88
White/Non-Hispanic	196	3	204	4	165	3	160	3	184	3
Hispanic	186	3	198	3	211	4	253	4	264	4
Asian or Pacific Islander	54	1	59	1	74	1	104	2	125	2
Am. Indian or Alaskan Native	5	*	8	*	12	*	9	*	9	*
International	87	1	102	2	94	2	93	2	83	2
Not Reported	1	*	1	*	9	*	9	*	69	1
TOTALS	6,324		5,702		5,813		6,118		6,278	

* Denotes less than one percent. Percent columns show rounded figures and may not total 100%. Includes Post-Baccalaureates.

Source: Texas Higher Education Coordinating Board - PREP Online

Fall 2008



Masters Student Enrollment By Ethnicity Fall 2004 - Fall 2008

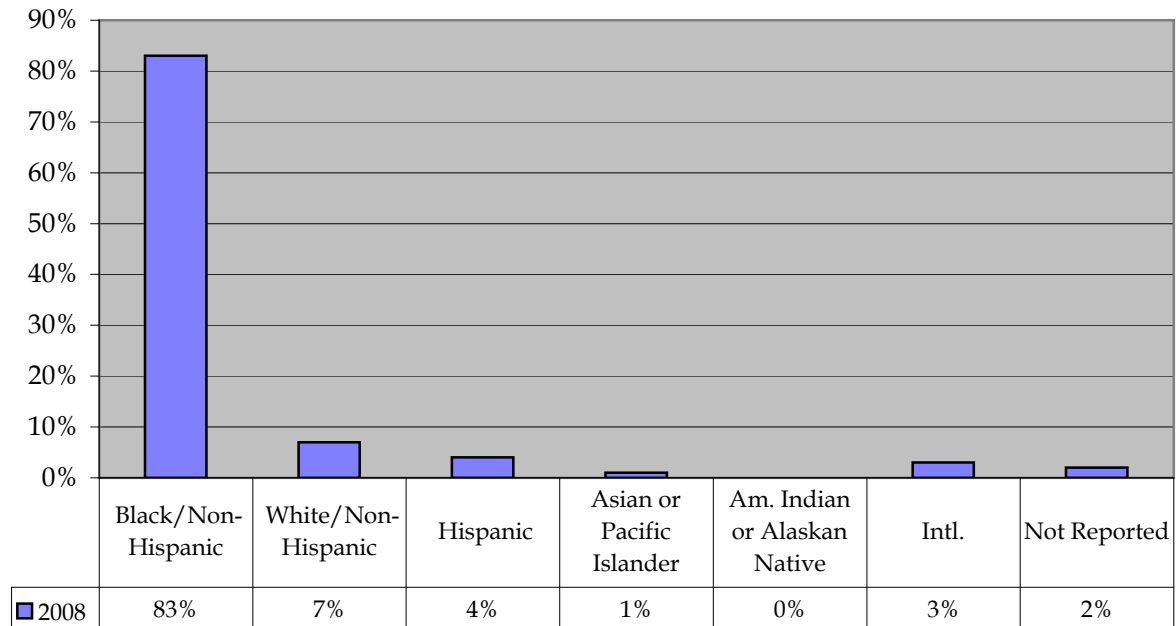
Table/Chart Enr-5

ETHNICITY	FALL SEMESTERS									
	2004		2005		2006		2007		2008	
	(N)	(%)	(N)	(%)	(N)	(%)	(N)	(%)	(N)	(%)
Black/Non-Hispanic	1,663	85	1,822	86	1,796	86	1,879	87	1,528	83
White/Non-Hispanic	173	9	182	9	154	7	128	6	133	7
Hispanic	47	2	49	2	42	2	60	3	66	4
Asian or Pacific Islander	28	1	14	1	27	1	27	1	22	1
Am. Indian or Alaskan Native	3	*	3	*	2	*	3	*	4	*
International	39	2	44	2	42	2	45	2	50	3
Not Reported	13	1	7	*	18	1	15	1	30	2
TOTALS	1,966		2,121		2,081		2,157		1,833	

* Denotes less than one percent. Percent columns show rounded figures and may not total 100%.

Source: Texas Higher Education Coordinating Board - PREP Online

Fall 2008



Doctoral Student Enrollment By Ethnicity Fall 2004 - Fall 2008

Table/Chart Enr-6

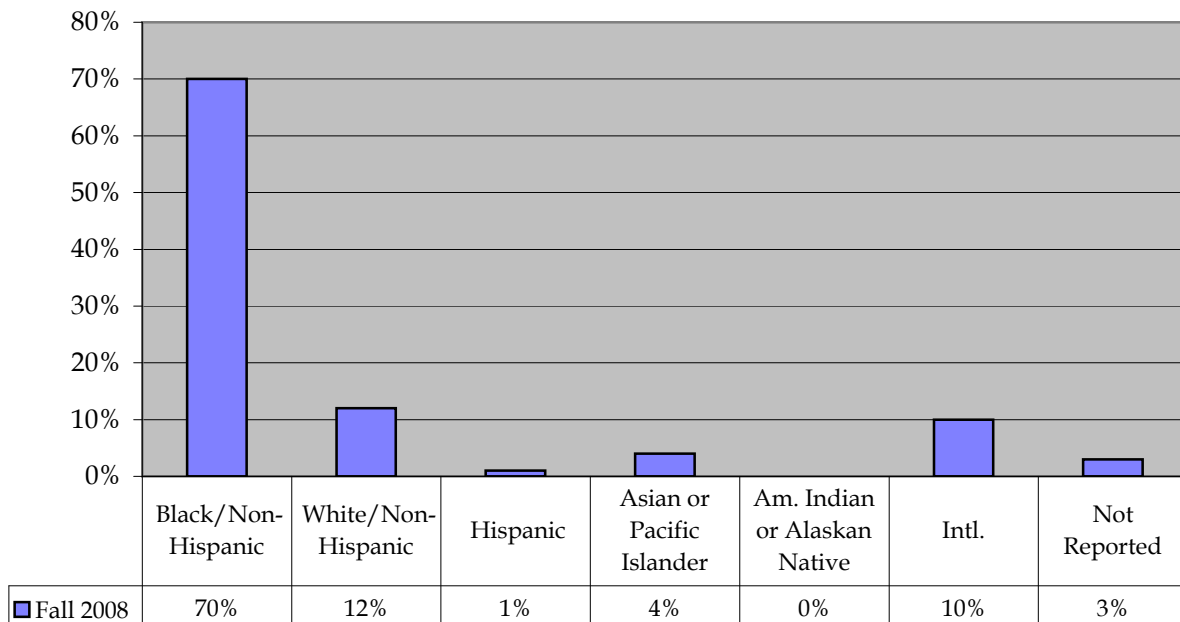
ETHNICITY	FALL SEMESTERS									
	2004		2005		2006		2007		2008	
	(N)	(%)	(N)	(%)	(N)	(%)	(N)	(%)	(N)	(%)
Black/Non-Hispanic	34	57	56	63	77	69	73	69	64	70
White/Non-Hispanic	10	17	12	13	14	13	16	13	11	12
Hispanic	5	8	5	6	4	4	5	5	1	1
Asian or Pacific Islander	1	2	1	1	3	3	3	3	4	4
Am. Indian or Alaskan Native	0	*	0	*	0	*	0	*	0	*
International	10	17	14	16	13	12	9	12	9	10
Not Reported	0	*	1	1	1	*	1	*	3	3
TOTALS	60		89		112		107		92	

* Denotes less than one percent. Percent columns show rounded figures and may not total 100%.

Note: First Doctorate started in 2001.

Source: Texas Higher Education Coordinating Board - PREP Online

Fall 2008



Total Student Enrollment by Age Distribution Fall 2004 - Fall 2008

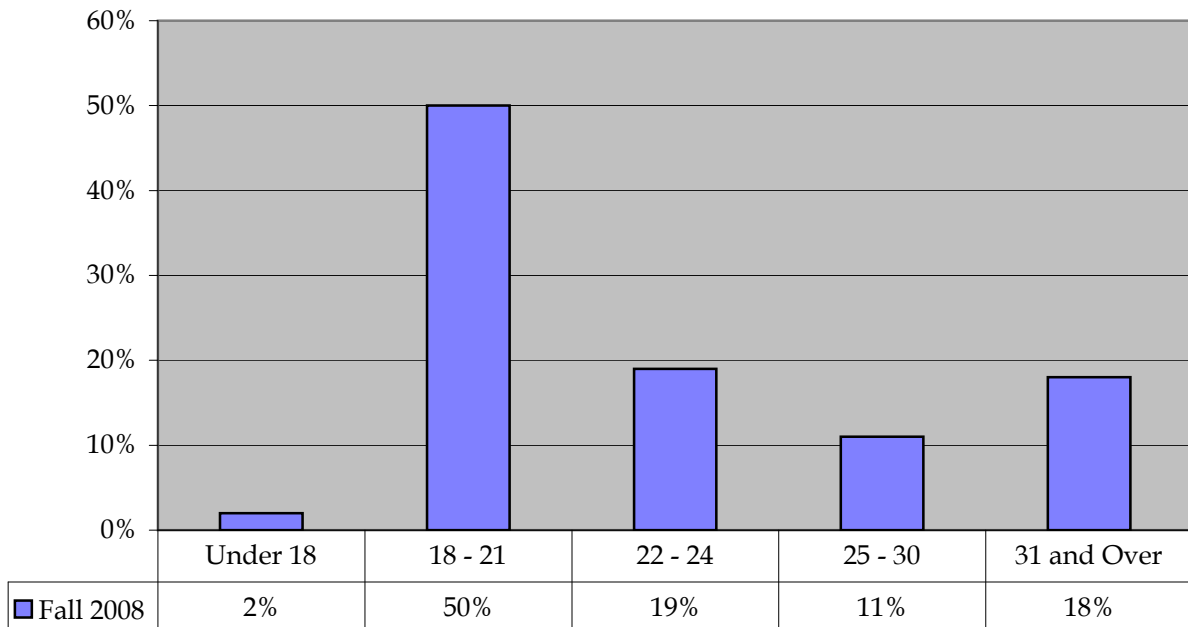
Table/Chart Enr-7

AGE	FALL SEMESTERS									
	2004		2005		2006		2007		2008	
	(N)	(%)	(N)	(%)	(N)	(%)	(N)	(%)	(N)	(%)
Under 18	141	2	112	1	126	2	30	0	133	2
18 - 21	4,542	54	3,952	50	3,979	50	3,898	47	4,152	50
22 - 24	1,258	15	1,272	16	1,347	17	1,662	20	1,572	19
25 - 30	998	12	1,052	13	982	12	1,015	12	900	11
31 and Over	1,411	17	1,524	19	1,572	20	1,777	21	1,446	18
TOTALS	8,350		7,912		8,006		8,382		8,203	

* Denotes less than one percent. Percent columns show rounded figures and may not total 100%.

Source: Texas Higher Education Coordinating Board - PREP Online

Fall 2008



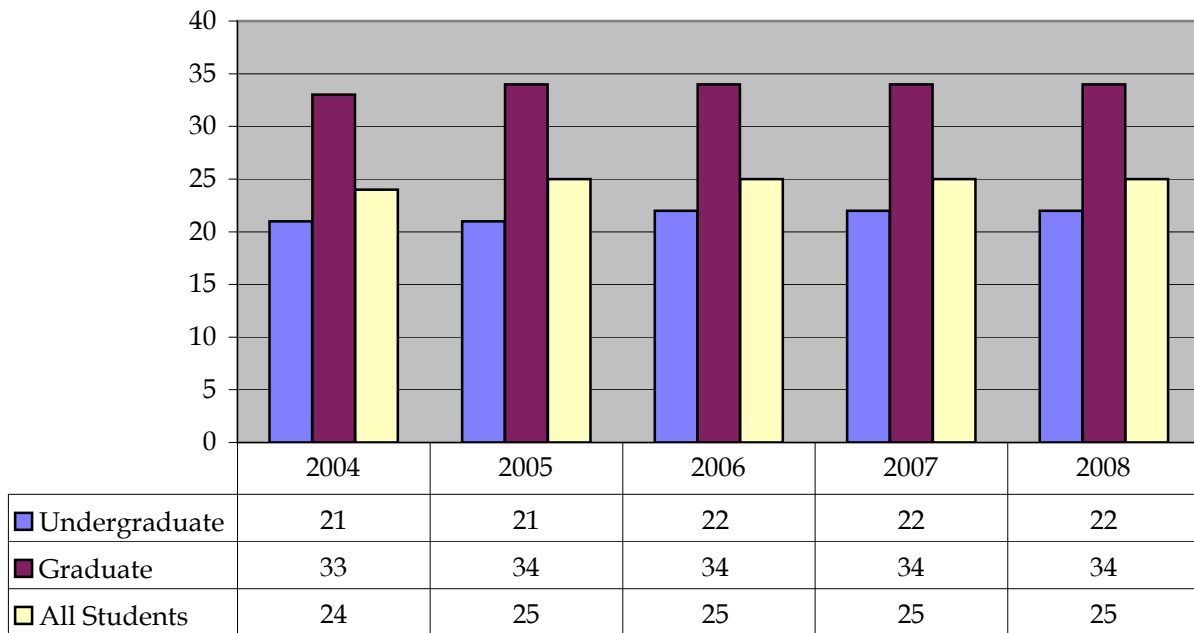
Average Student Age by Level Fall 2004 - Fall 2008

Table/Chart Enr-8

LEVEL	FALL SEMESTERS				
	2004	2005	2006	2007	2008
Undergraduate	21	21	22	22	22
Graduate	33	34	34	34	34
Average Age - All Students	24	25	25	25	25

Source: Texas Higher Education Coordinating Board - PREP Online

Fall 2004-2008



Total Student Enrollment by Geographical Source Fall 2004 - Fall 2008

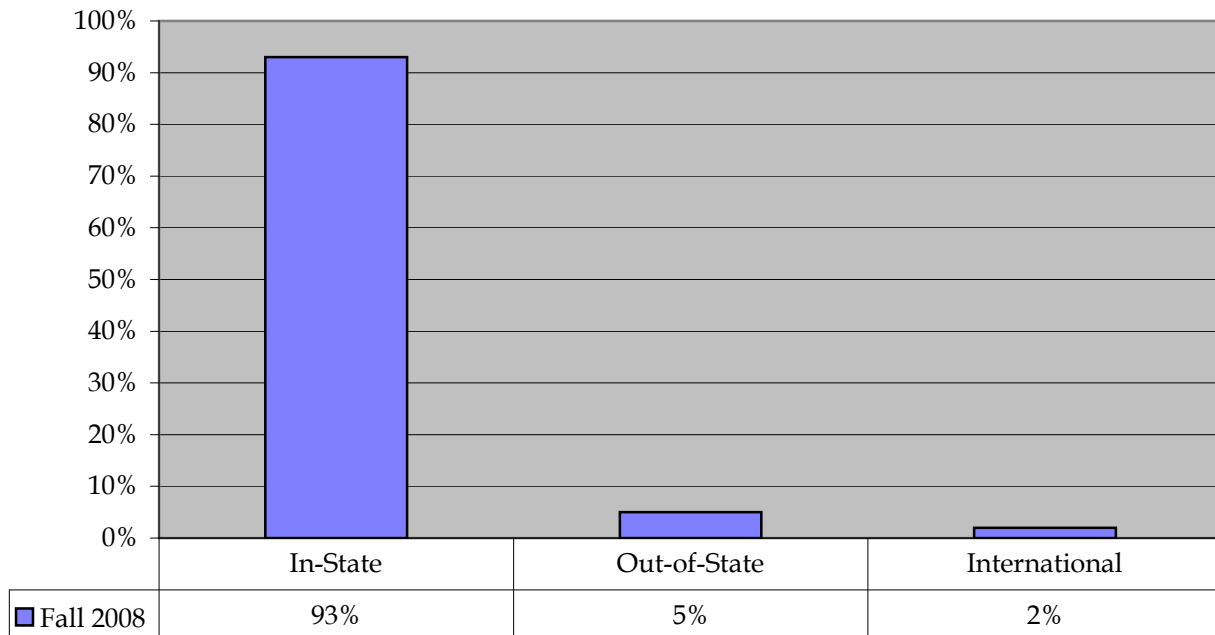
Table/Chart Enr-9

GEOGRAPHICAL SOURCE	FALL SEMESTERS									
	2004		2005		2006		2007		2008	
	(N)	(%)	(N)	(%)	(N)	(%)	(N)	(%)	(N)	(%)
In-State	7,778	93	7,324	93	7,425	93	7,768	93	7,607	93
Out-of-State	423	5	421	5	426	5	447	5	449	5
International	149	2	167	2	155	2	167	2	147	2
TOTALS	8,350		7,912		8,006		8,382		8,203	

* Denotes less than one percent. Percent columns show rounded figures and may not total 100%.

Source: Texas Higher Education Coordinating Board - PREP Online

Fall 2008



First-Time Entering Students by Source Fall 2004 - Fall 2008

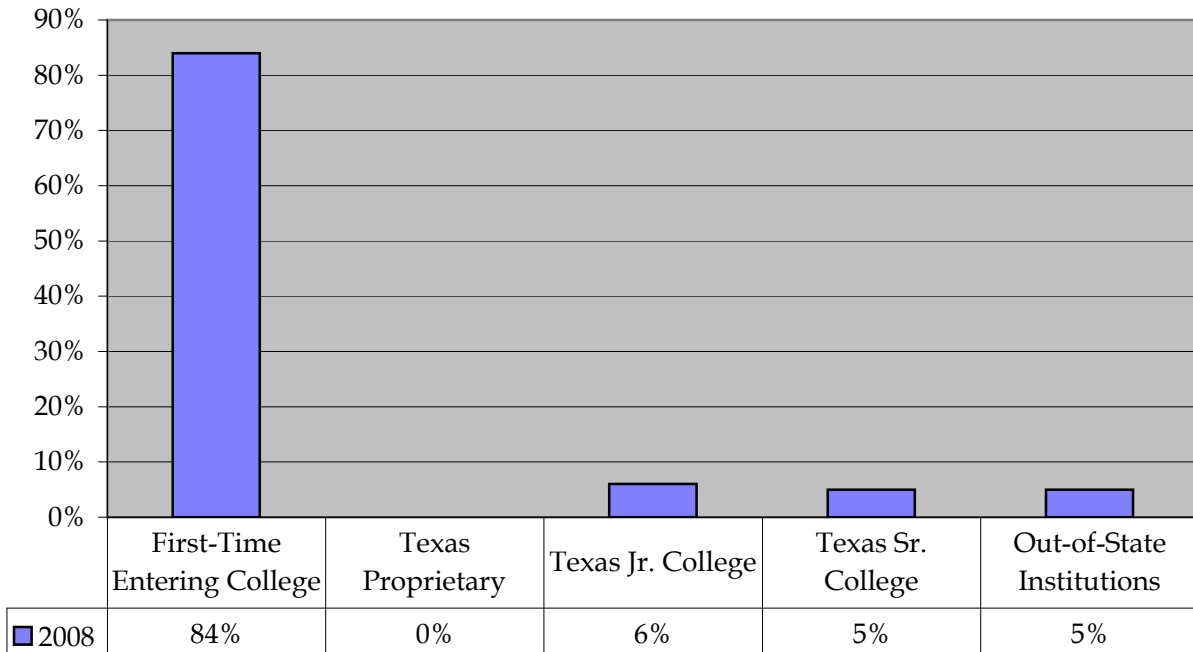
Table/Chart Enr-10

SOURCE	FALL SEMESTERS									
	2004		2005		2006		2007		2008	
	(N)	(%)	(N)	(%)	(N)	(%)	(N)	(%)	(N)	(%)
First-Time Entering College	1,473	82	1,624	87	1,731	85	1,907	86	1,581	84
TX Proprietary Schools	2	*	0	*	0	*	1	*	0	*
Texas Jr. College	203	11	159	8	192	9	192	9	113	6
Texas Sr. College	54	3	37	2	47	2	48	2	85	5
Out-of-State Institutions	63	4	56	3	74	4	58	3	99	5
TOTALS	1,795		1,876		2,044		2,206		1,878	

* Denotes less than one percent. Percent columns show rounded figures and may not total 100%.

Source: Texas Higher Education Coordinating Board - PREP Online

Fall 2008



Total Student Enrollment by Semester Credit Hour Load Fall 2004 - Fall 2008

Table/Chart Enr-11

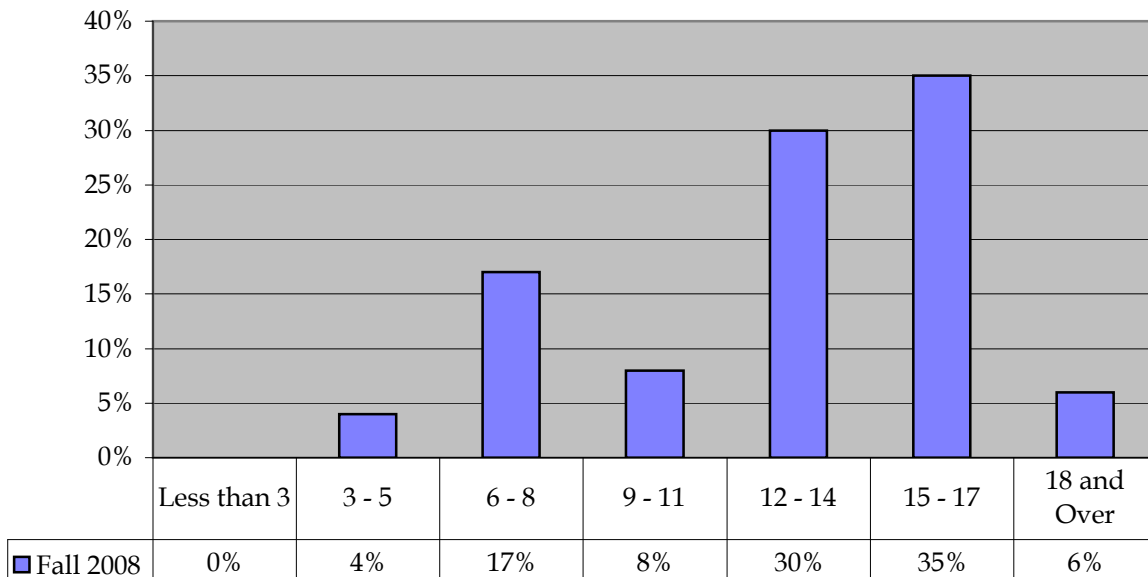
SCH LOAD	FALL SEMESTERS									
	2004		2005		2006		2007		2008	
	(N)	(%)	(N)	(%)	(N)	(%)	(N)	(%)	(N)	(%)
Less than 3	2	*	5	*	3	*	3	*	7	*
3 - 5	350	4	329	4	313	4	325	4	306	4
6 - 8	1,345	16	1,510	19	1,532	19	1,664	20	1,435	17
9 - 11	767	9	822	10	782	10	803	10	639	8
12 - 14	1,892	23	1,755	22	1,999	25	2,047	24	2,437	30
15 - 17	3,387	41	2,961	37	2,869	36	2,981	36	2,852	35
18 and Over	607	7	530	7	508	6	559	7	527	6
TOTALS	8,350		7,912		8,006		8,382		8,203	

* Denotes less than one percent. Percent columns show rounded figures and may not total 100%.

Note: A semester credit hour is defined as: A unit of measure that represents one student engaged in an activity for which one hour of credit toward a degree or other certificate is granted upon completion. Total semester credit hours for a course are calculated by multiplying the course's credit hour value by the number of students enrolled in the course.

Source: Texas Higher Education Coordinating Board - PREP Online

Fall 2008



Student FTE by Level Fall 2004- Fall 2008

Table/Chart Enr-12

LEVEL	FALL SEMESTERS									
	2004		2005		2006		2007		2008	
	(N)	(%)	(N)	(%)	(N)	(%)	(N)	(%)	(N)	(%)
Undergraduate	5,926	83	5,372	80	5,403	81	5,658	81	5,769	84
Masters	1,192	17	1,230	18	1,204	18	1,273	18	1,058	15
Doctoral	53	*	83	1	97	1	70	1	43	1
TOTALS	7,171		6,685		6,704		7,001		6,870	

Note: Undergraduate FTE formula = total undergraduate student credit hours divided by 15.

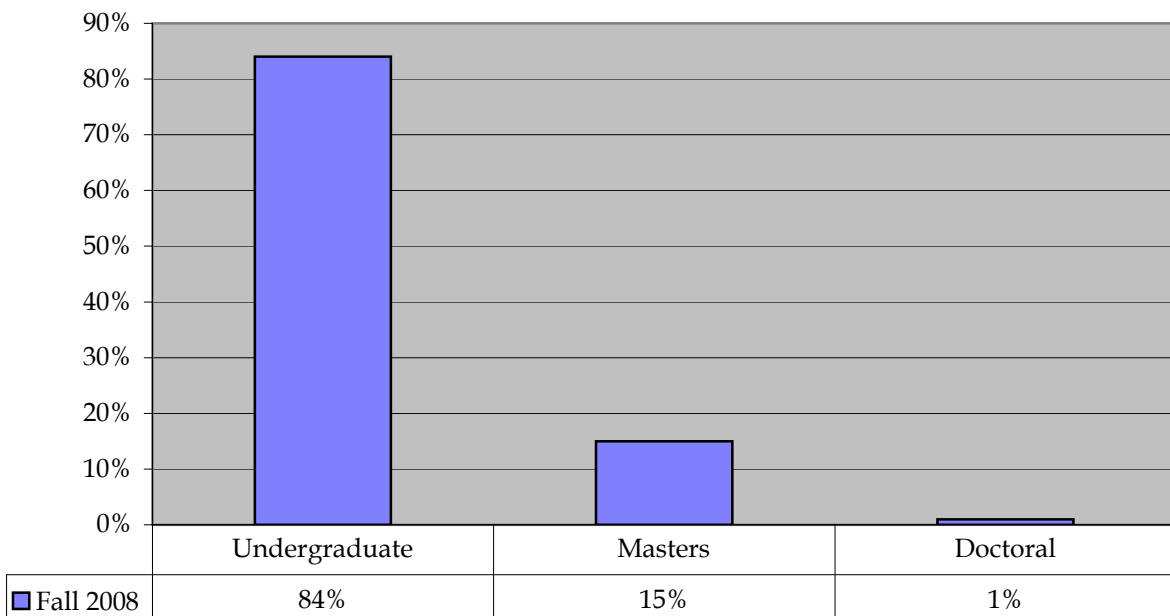
Masters FTE formula = total masters student credit hours divided by 12.

Doctoral FTE formula = total doctoral student credit hours divided by 9.

Source: Texas Higher Education Coordinating Board - PREP Online

* Denotes less than one percent. Percent columns show rounded figures and may not total 100%.

Fall 2008



Total Student Enrollment by Tuition Status Fall 2004 - Fall 2008

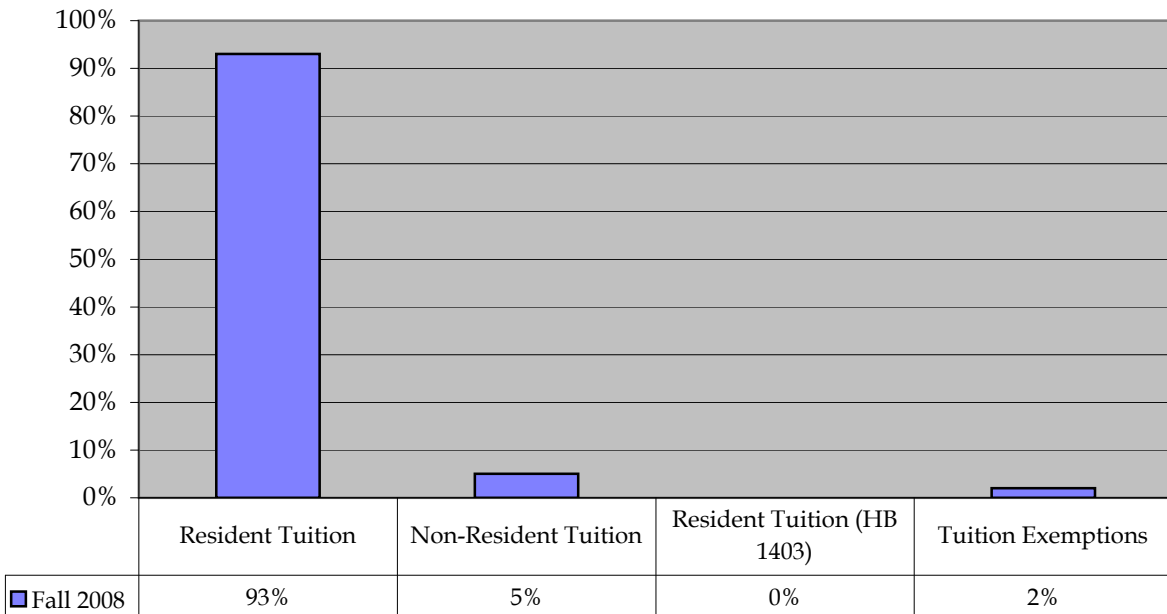
Table/Chart Enr-13

TUITION STATUS	FALL SEMESTERS									
	2004		2005		2006		2007		2008	
	(N)	(%)	(N)	(%)	(N)	(%)	(N)	(%)	(N)	(%)
Resident Tuition	7,679	92	7,244	92	7,327	92	7,680	92	7,607	93
Non-Resident Tuition	520	6	449	6	475	6	541	6	449	5
Resident Tuition (HB 1403)	26	*	25	*	27	*	35	*	0	*
Tuition Exemptions	125	1	194	2	177	2	126	2	147	2
TOTALS	8,350		7,912		8,006		8,382		8,203	

* Denotes less than one percent. Percent columns show rounded figures and may not total 100%.

Source: Texas Higher Education Coordinating Board - PREP Online

Fall 2008



Full-Time and Part-Time Student Enrollment by Level Fall 2004 - Fall 2008

Table/Chart Enr-14

FULL-TIME/PART-TIME BY LEVEL	FALL SEMESTERS									
	2004		2005		2006		2007		2008	
	(N)	(%)	(N)	(%)	(N)	(%)	(N)	(%)	(N)	(%)
FULL-TIME										
Undergraduate	5,738	69	5,140	65	5,264	66	5,466	65	5,671	69
Masters	680	8	659	8	618	8	635	8	501	6
Doctoral	46	*	78	1	87	1	44	1	51	1
PART-TIME										
Undergraduate	586	7	562	7	549	7	652	8	607	7
Masters	1,286	15	1,462	18	1,463	18	1,522	18	1,332	16
Doctoral	14	*	11	*	25	*	63	*	41	*
TOTAL ENROLLMENT	8,350		7,912		8,006		8,382		8,203	

Full-Time Total	6,464	77	5,877	74	5,976	75	6,390	76	6,223	76
Part-Time Total	1,886	23	2,035	26	2,030	25	1,992	24	1,980	24

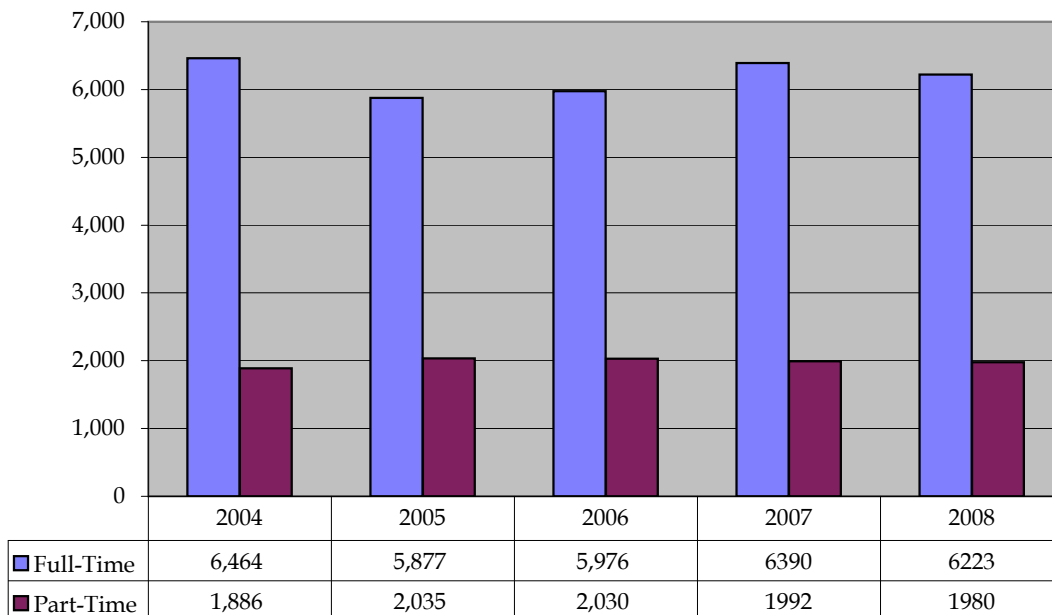
Note: A full-time undergraduate student is one who takes 12 or more credit hours per semester.

A full-time graduate student is one who takes 9 or more credit hours per semester.

* Denotes less than one percent. Percent columns show rounded figures and may not total 100%.

Source: Texas Higher Education Coordinating Board - PREP Online

Fall 2004 - 2008



Top Ten Feeder High Schools Fall 2008

Table Enr-15

SCHOOL CODE	FALL 2008 NAME OF HIGH SCHOOL	CITY	STATE	ZIP CODE	# OF PV STUDENTS
444841	Thurgood Marshall	Missouri City	TX	77489	32
443408	North Shore	Houston	TX	77015	28
441812	Skyline	Dallas	TX	75227	26
440078	Elsik	Alief	TX	77411	26
443359	Eisenhower	Houston	TX	77088	23
440502	Ozen	Beaumont	TX	77705	21
443398	James Madison	Houston	TX	77045	21
443454	Westbury	Houston	TX	77035	21
441967	Desoto	Desoto	TX	75115	18
443458	Westfield	Houston	TX	77090	18

Source: PVAMU Information Technology (FOCUS Report)

Top Eleven College Feeder Institutions Fall 2008

SCHOOL CODE	FALL 2007 NAME OF HIGH SCHOOL	CITY	STATE	ZIP CODE	# OF TRANSFERS
10633	Houston Community College	Houston	TX	77266	26
3652	University of Houston	Houston	TX	77204	21
3642	Texas Southern University	Houston	TX	77004	15
3609	San Jacinto CCD	Houston	TX	77501	13
3549	Blinn College	Brenham	TX	77833	12
12826	University of Houston-Downtown	Houston	TX	77002	12
3581	Lamar University	Beaumont	TX	77710	12
11145	Lonestar College	Houston	TX	77381	11
3606	Sam Houston State University	Huntsville	TX	77341	7
3157	Langston University	Langston	OK	73050	5
9331	Dallas County CCD	Dallas	TX	75202	5

Source: PVAMU Information Technology (FOCUS Report)

Foreign Headcount by Country of Origin Fall 2004-Fall 2008

Table Enr-16

Name	Code	Fall Semesters				
		2004	2005	2006	2007	2008
Bangladesh	416	9	5	5	2	1
Bermuda	417	0	0	1	1	1
Bahamas	419	10	7	8	10	9
Barbados	421	0	0	0	1	1
Brazil	430	0	2	2	1	0
Cameroon	437	1	3	2	2	2
Canada	440	1	1	2	2	2
Chad	444	0	0	1	1	0
China, Peoples Republic of	450	13	11	8	10	6
Taiwan	451	0	1	4	5	2
Colombia	455	2	2	4	4	4
Dominica	474	1	2	2	2	1
Ecuador	480	0	0	0	1	1
England	490	0	1	1	0	0
Ethiopia	492	0	0	1	1	0
France	495	0	0	0	1	2
Gabon Republic	497	1	1	1	0	0
Ghana	502	8	6	3	1	2
India	530	2	0	2	10	10
Indonesia	535	0	0	1	1	1
Cote D'Ivoire (Ivory Coast)	561	0	0	1	1	0
Jamaica	562	51	64	52	56	55
Kenya	575	9	12	10	6	3
Lebanon	595	0	0	1	1	0
Mexico	610	4	2	2	2	2
Nepal	615	0	0	1	1	0
Nigeria	635	12	15	13	21	19
Niger	636	0	1	1	1	1
Pakistan	645	5	7	9	8	9
Zimbabwe (Rhodesia)	675	4	5	3	1	3
Saudi Arabia	685	1	1	1	2	1
St. Vincent & The Grenadines	687	0	1	1	1	1
Senegal	692	0	0	0	1	1
Singapore	693	0	0	0	1	0
South Africa	700	0	0	0	1	0
Spain	695	1	1	1	0	1
Thailand	720	1	1	2	1	1
Trinidad & Tobago	725	2	2	2	1	0
Turkey	730	0	0	1	1	1
Uganda	732	0	0	1	1	0
United Kindom	736	1	1	1	1	1
Burkina Faso (Upper Volta)	739	0	0	1	1	1
Venezuela	745	3	3	3	1	0
Total		142	158	155	167	145

Source: Texas Higher Education Coordinating Board - PREP Online

Total Semester Credit Hours Generated by Level Fall 2004 - Fall 2008

Table/Chart Sch-1

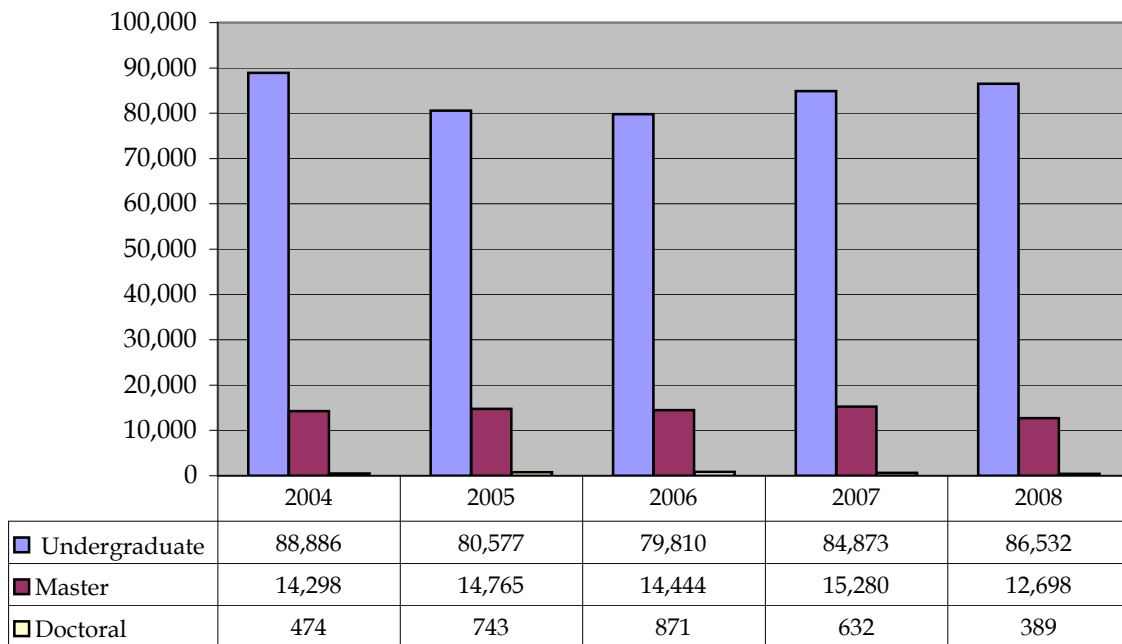
LEVEL	FALL SEMESTERS									
	2004		2005		2006		2007		2008	
	(N)	(%)	(N)	(%)	(N)	(%)	(N)	(%)	(N)	(%)
Undergraduate	88,886	86	80,577	84	81,049	84	84,873	84	86,532	87
Masters	14,298	14	14,765	15	14,444	15	15,280	15	12,698	13
Doctoral	474	*	743	1	871	1	632	1	389	0
TOTALS	103,658		96,085		96,364		100,785		99,619	

* Denotes less than one percent. Percent columns show rounded figures and may not total 100%.

Source: Texas Higher Education Coordinating Board - PREP Online

Numbers supercede those in previous Factbooks.

Fall 2004-2008



Total Semester Credit Hours Generated On-Campus and Off-Campus Fall 2004 - Fall 2008

Table/Chart Sch-2

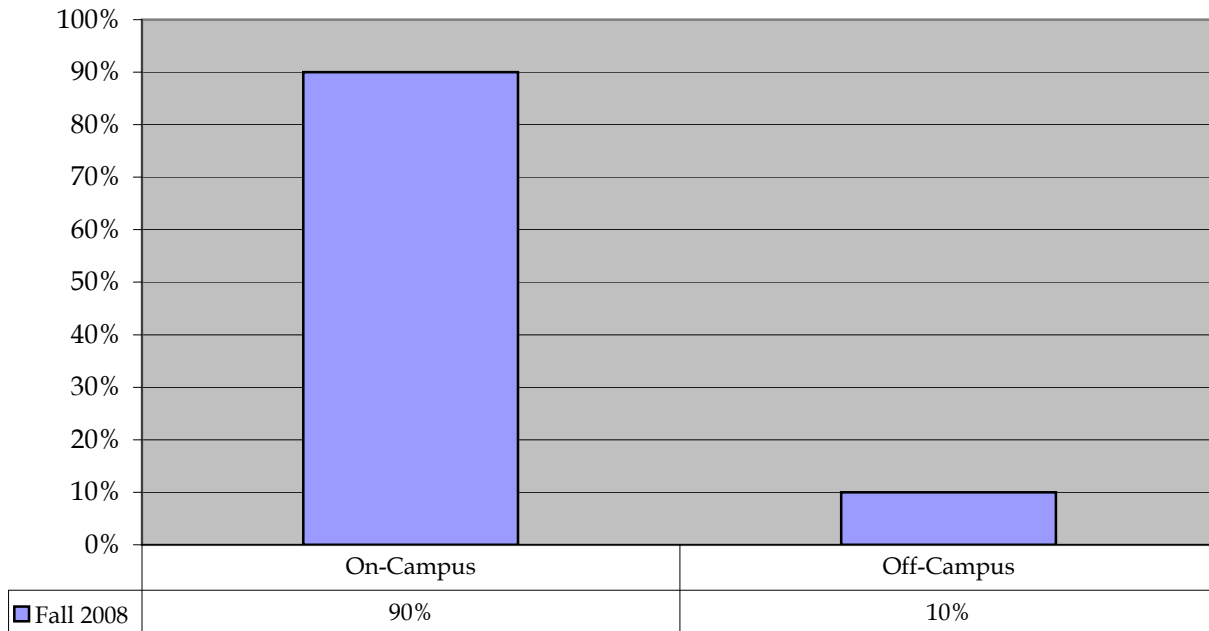
ON/OFF CAMPUS	FALL SEMESTERS									
	2004		2005		2006		2007		2008	
	(N)	(%)	(N)	(%)	(N)	(%)	(N)	(%)	(N)	(%)
On-Campus	96,338	93	87,207	91	87,103	90	90,069	89	89,316	90
Off-Campus	7,320	7	8,878	9	9,261	10	10,716	11	10,303	10
TOTALS	103,658		96,085		96,364		100,785		99,619	

* Denotes less than one percent. Percent columns show rounded figures and may not total 100%.

Source: Texas Higher Education Coordinating Board - PREP Online

Numbers supercede those in previous Factbooks.

Fall 2008



Total Semester Credit Hours Taught by Faculty Rank Fall 2004-Fall 2008

Table/Chart Sch-3

RANK	FALL SEMESTERS									
	2004		2005		2006		2007		2008	
	(N)	(%)	N	(%)	N	(%)	N	(%)	N	(%)
Professor	11,912	11	11,469	12	10,475	10	10,561	10	11,480	12
Associate Professor	17,492	17	15,457	16	15,487	15	16,281	16	16,495	16
Assistant Professor	32,769	32	27,006	28	26,678	26	24,955	25	19,864	20
Instructor	701	1	740	1	705	1	849	1	675	1
Teaching Assistant	965	*	1,530	2	1,424	1	976	1	1,200	1
Other: **	39,819	38	96,085	100	41,595	41	47,163	47	49,905	50
TOTALS	103,658		96,085		96,364		100,785		99,619	

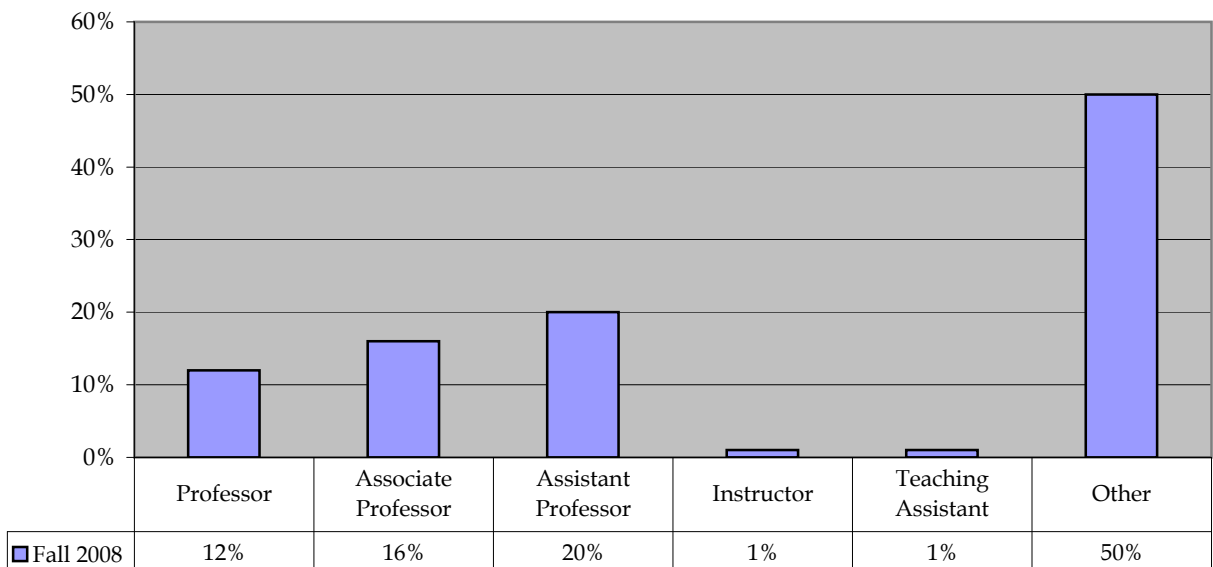
* Denotes less than one percent. Percent columns show rounded figures and may not total 100%.

**Since this is a dynamic system, numbers for previous years are not retrievable.

Note: In 1996, the Coordinating Board changed the definitions of the top four ranks to include only tenured or tenure-track faculty. The category "Other" was modified in 1996 to include faculty without tenure and not on tenure track including but not limited to adjunct, special, visiting, emeritus, and lecturer at PVAMU. "Other" also includes faculty with tenure or on tenure track from another institution.

Source: Texas Higher Education Coordinating Board - PREP Online
Numbers supercede those in previous Factbooks.

Fall 2008



Undergraduate Semester Credit Hours (by Colleges/Departments)

Fall 2004 - Fall 2008

Table Sch-4

COLLEGE/DEPARTMENT	FALL SEMESTERS									
	2004	%	2005	%	2006	%	2007	%	2008	%
AGRICULTURE and HUMAN SCIENCES										
Agriculture, Nutrition, and Human Ecology	2,850	106	2,694	90	2,991	100	3,002	100	2,697	100
Subtotals	2,850		2,694		2,991		3,002		2,697	
SCHOOL OF ARCHITECTURE										
Art and Architecture	5,524	105	5,276	107	4,911	80	6,168	100	6,172	100
Subtotals	5,524		5,276		4,911		6,168		6,172	
ARTS and SCIENCES										
Army Science (Army ROTC)	139	0	141	0	190	0	232	1	259	1
Biology	5,071	13	5,096	13	4,801	12	5,507	14	5,593	14
Chemistry	3,105	8	2,714	7	2,483	6	2,877	7	2,989	7
Languages and Communications	10,878	28	9,525	24	9,789	24	9,246	23	8,781	22
Mathematics	6,091	16	4,939	12	5,260	13	6,171	15	5,395	13
Music and Drama	3,665	9	3,114	8	3,366	8	3,022	7	3,041	8
Naval Science (Navy ROTC)	132	0	153	0	144	0	177	0	198	0
Physics	2,200	6	1,990	5	2,040	5	1,844	5	2,474	6
Social Work, Behavioral and Political Science	13,836	35	11,577	29	11,751	29	11,226	28	11,712	29
Subtotals	45,117		39,249		39,824		40,302		40,442	
BUSINESS										
Accounting, Finance, and Information Systems	4,581	53	4,050	50	4,050	45	4,164	46	4,665	48
Management and Marketing	4,632	54	4,554	56	4,107	45	4,875	54	5,133	52
Subtotals	9,213		8,604		8,157		9,039		9,798	
EDUCATION										
Curriculum and Instruction	1,755	30	1,710	28	1,992	32	2,028	33	1,575	28
Health and Human Performance	4,592	79	4,033	66	4,078	66	4,113	66	3,917	70
Educational Leadership and Counseling	33	1	36	1	45	1	81	1	102	2
Subtotals	6,380		5,779		6,115		6,222		5,594	
ENGINEERING										
Chemical Engineering	638	8	602	8	628	8	624	8	675	8
Civil & Environmental Engineering	446	6	482	6	775	10	670	9	730	9
Computer Science	2,733	35	2,389	31	2,374	31	2,448	32	2,477	31
Electrical & Computer Engineering	1,594	21	1,547	20	1,598	21	1,642	22	1,817	23
Engineering Technology	2,615	34	1,794	23	1,374	18	1,116	15	955	12
Mechanical Engineering	727	9	921	12	934	12	1,109	15	1,335	17
Subtotals	8,753		7,735		7,683		7,609		7,989	
JUVENILE JUSTICE and PSYCHOLOGY										
Juvenile Justice and Psychology	---		---		---		---		---	
Juvenile Justice ¹	2,598	50	2,502	47	2,430	45	2,640	49	2,895	48
Psychology ²	3,015	58	2,720	51	2,929	55	2,728	51	3,153	52
Subtotals	5,613		5,222		5,359		5,368		6,048	
NURSING										
Nursing	3,041	82	3,692	91	4,064	93	4,382	100	5,337	100
Subtotals	3,041		3,692		4,064		4,382		5,337	
UNIVERSITY COLLEGE										
Developmental Studies	2,395	103	2,326	120	1,945	70	2,781	100	2,455	100
Subtotals	2,395		2,326		1,945		2,781		2,455	
UNIVERSITY TOTALS	88,886		80,577		81,049		84,873		86,532	

See notes/references at the end of this section.

Numbers supercede those in previous Factbooks.

Juvenile Justice: The College of Juvenile Justice and Psychology split into two departments effective fall 2006

Masters Semester Credit Hours (by Colleges/Departments) Fall 2004 - Fall 2008

Table Sch-5

COLLEGE/DEPARTMENT	FALL SEMESTERS									
	2004	%	2005	%	2006	%	2007	%	2008	%
AGRICULTURE and HUMAN SCIENCES										
Agriculture, Nutrition, and Human Ecology	1,026	101	1,011	131	771	109	705	100	633	100
Subtotals	1,026		1,011		771		705		633	
SCHOOL OF ARCHITECTURE										
Art and Architecture	996	136	732	92	795	129	615	100	693	100
Subtotals	996		732		795		615		693	
ARTS and SCIENCES										
Army Science (Army ROTC)	---		---		---		---		---	
Biology	21	6	24	6	87	25	102	29	64	24
Chemistry	60	18	24	6	75	21	72	21	38	14
Languages and Communications	48	15	0	0	27	8	45	13	66	24
Mathematics	108	33	126	33	93	26	33	9	21	8
Music and Drama	0	0	0	0	0	0	0	0	0	0
Naval Science (Navy ROTC)	---		---		---		---		---	
Physics	0	0	0	0	0	0	0	0	0	0
Social Work, Behavioral and Political Science	183	55	156	41	96	27	99	28	81	30
Subtotals	420		330		378		351		270	
BUSINESS										
Accounting, Finance, and Information Systems	567	66	447	52	414	42	543	55	636	48
Management and Marketing	420	49	417	48	453	46	450	45	690	52
Subtotals	987		864		867		993		1,326	
EDUCATION										
Curriculum and Instruction	1,320	13	1,344	13	1,134	10	843	8	858	10
Health and Human Performance	180	2	147	1	123	1	93	1	60	1
Educational Leadership and Counseling	8,235	78	9,039	88	9,033	83	9,951	91	7,422	89
Subtotals	9,735		10,530		10,290		10,887		8,340	
ENGINEERING										
Chemical Engineering	12	2	95	18	48	9	0	0	0	0
Civil & Environmental Engineering	81	16	132	24	0	0	12	2	33	7
Computer Science	207	40	129	24	81	16	117	22	174	39
Electrical & Computer Engineering	48	9	96	18	117	22	144	28	196	44
Engineering Technology	---		---		---		---		---	
Mechanical Engineering	93	18	66	12	294	56	249	48	39	9
Subtotals	441		518		540		522		442	
JUVENILE JUSTICE and PSYCHOLOGY										
Juvenile Justice and Psychology	---		---		---		---		---	
Juvenile Justice ¹	141	27	198	55	156	36	195	45	216	57
Psychology ²	369	70	327	91	204	47	237	55	162	43
Subtotals	510		525		360		432		378	
NURSING										
Nursing	183	72	255	58	443	57	775	100	616	100
Subtotals	183		255		443		775		616	
UNIVERSITY COLLEGE										
Developmental Studies	---		---		---		---		---	
Subtotals	---		---		---		---		---	
UNIVERSITY TOTALS	14,298		14,765		14,444		15,280		12,698	

See notes/references at the end of this section.

Numbers supercede those in previous Factbooks.

Juvenile Justice: The college of Juvenile Justice and Psychology split into two departments effective fall 2006

Doctoral Semester Credit Hours (by Colleges/Departments) Fall 2004 - Fall 2008

Table Sch-6

COLLEGE/DEPARTMENT	FALL SEMESTERS									
	2004	%	2005	%	2006	%	2007	%	2008	%
AGRICULTURE and HUMAN SCIENCES										
Agriculture, Nutrition, and Human Ecology	---		---		---		---		---	
Subtotals	---		---		---		---		---	
SCHOOL OF ARCHITECTURE										
Art and Architecture	---		---		---		---		---	
Subtotals	---		---		---		---		---	
ARTS and SCIENCES										
Army Science (Army ROTC)	---		---		---		---		---	
Biology	---		---		---		---		---	
Chemistry	---		---		---		---		---	
Languages and Communications	---		---		---		---		---	
Mathematics	---		---		---		---		---	
Music and Drama	---		---		---		---		---	
Naval Science (Navy ROTC)	---		---		---		---		---	
Physics	---		---		---		---		---	
Social Work, Behavioral and Political Science	---		---		---		---		---	
Subtotals	---		---		---		---		---	
BUSINESS										
Accounting, Finance, and Information Systems	---		---		---		---		---	
Management and Marketing	---		---		---		---		---	
Subtotals	---		---		---		---		---	
EDUCATION										
Curriculum and Instruction	---		---		---		---		---	
Health and Human Performance	---		---		---		---		---	
Educational Leadership & Counseling	135	47	288	62	465	163	285	100	192	100
Subtotals	135		288		465		285		192	
ENGINEERING										
Chemical Engineering	---		---		---		---		---	
Civil & Environmental Engineering	---		---		---		---		---	
Computer Science	---		---		---		---		---	
Electrical & Computer Engineering	76	75	102	121	84	127	66	100	44	100
Engineering Technology	---		---		---		---		---	
Mechanical Engineering	---		---		---		---		---	
Subtotals	76		102		84		66		44	
JUVENILE JUSTICE and PSYCHOLOGY										
Juvenile Justice and Psychology	---		---		---		---		---	
Juvenile Justice ¹	227	64	232	72	200	71	136	48	99	65
Psychology ²	36	10	121	38	122	43	145	52	54	35
Subtotals	263		353		322		281		153	
NURSING										
Nursing	---		---		---		---		---	
Subtotals	---		---		---		---		---	
UNIVERSITY COLLEGE										
Developmental Studies	---		---		---		---		---	
Subtotals	---		---		---		---		---	
UNIVERSITY TOTALS	474		743		871		632		389	

See notes/references at the end of this section.

Numbers supercede those in previous Factbooks.

Juvenile Justice: The college of Juvenile Justice and Psychology split into two departments effective fall 2006

Total Semester Credit Hours (by Colleges/Departments) Fall 2004 - Fall 2008

Table Sch-7

COLLEGE/DEPARTMENT	FALL SEMESTERS									
	2004	%	2005	%	2006	%	2007	%	2008	%
AGRICULTURE and HUMAN SCIENCES										
Agriculture, Nutrition, and Human Ecology	3,876	100	3,705	96	3,762	100	3,707	100	3,330	100
Subtotals	3,876		3,876		3,762		3,707		3,330	
SCHOOL OF ARCHITECTURE										
Art and Architecture	6,520	100	6,008	92	5,706	100	6,783	100	6,865	100
Subtotals	6,520		6,520		5,706		6,783		6,865	
ARTS and SCIENCES										
Army Science (Army ROTC)	139	0	141	0	190	0	232	1	259	1
Biology	5,092	11	5,120	13	4,888	12	5,609	14	5,657	14
Chemistry	3,165	7	2,738	7	2,558	6	2,949	7	3,027	7
Languages and Communications	10,926	24	9,525	24	9,816	24	9,291	23	8,847	22
Mathematics	6,199	14	5,065	13	5,353	13	6,204	15	5,416	13
Music and Drama	3,665	8	3,114	8	3,366	8	3,022	7	3,041	7
Naval Science (Navy ROTC)	132	0	153	0	144	0	177	0	198	0
Physics	2,200	5	1,990	5	2,040	5	1,844	5	2,474	6
Social Work, Behavioral and Political Science	14,019	31	11,733	30	11,847	29	11,325	28	11,793	29
Subtotals	45,537		39,579		40,202		40,653		40,712	
BUSINESS										
Accounting, Finance, and Information Systems	5,148	50	4,497	47	4,464	49	4,707	47	5,301	48
Management and Marketing	5,052	50	4,971	53	4,560	51	5,325	53	5,823	52
Subtotals	10,200		9,468		9,024		10,032		11,124	
EDUCATION										
Curriculum and Instruction	3,075	19	3,054	18	3,126	19	2,871	17	2,433	17
Health and Human Performance	4,772	29	4,180	25	4,201	25	4,206	24	3,977	28
Educational Leadership and Counseling	8,403	52	9,363	56	9,543	57	10,317	59	7,716	55
Subtotals	16,250		16,597		16,870		17,394		14,126	
ENGINEERING										
Chemical Engineering	650	7	697	8	676	8	624	8	675	8
Civil & Environmental Engineering	527	6	614	7	775	9	682	8	763	9
Computer Science	2,940	32	2,518	30	2,455	30	2,565	31	2,651	31
Electrical & Computer Engineering	1,718	19	1,745	21	1,799	22	1,852	23	2,057	24
Engineering Technology	2,615	28	1,794	21	1,374	17	1,116	14	955	11
Mechanical Engineering and General	820	9	987	12	1,228	15	1,358	17	1,374	16
Subtotals	9,270		8,355		8,307		8,197		8,475	
JUVENILE JUSTICE and PSYCHOLOGY										
Juvenile Justice and Psychology	0		---		---		---		---	
Juvenile Justice ¹			2,932	48	2,786	46	2,971	49	3,210	49
Psychology ²			3,168	52	3,255	54	3,110	51	3,369	51
Subtotals	0		6,100		6,041		6,081		6,579	
NURSING										
Nursing	3,224	100	3,947	100	4,507	100	5,157	100	5,953	100
Subtotals	3,224		3,947		4,507		5,157		5,953	
UNIVERSITY COLLEGE										
Developmental Studies	2,395	100	2,326	100	1,945	100	2,781	100	2,455	100
Subtotals	2,395		2,326		1,945		2,781		2,455	
UNIVERSITY TOTALS	97,272		96,768		96,364		100,785		99,619	

See notes/references at the end of this section.

Numbers supercede those in previous Factbooks.

Juvenile Justice: The college of Juvenile Justice and Psychology split into two departments effective fall 2006

Approved Degree Programs Academic Year 2008-2009

Table Deg-1

	<i>DEGREE LEVEL</i>		
	Baccalaureate	Masters	Doctoral
COLLEGE OF AGRICULTURE AND HUMAN SCIENCES			
Department of Agriculture, Nutrition, and Human Ecology			
Agriculture	BSAG		
Agricultural Economics		MS	
Animal Science		MS	
Soil Science		MS	
Human Sciences		MS	
Family and Community Services	BSHS		
Human Nutrition and Food	BSDIET		
SCHOOL OF ARCHITECTURE			
Architecture	BS	MARCH	
Architecture (2006 - Being phased out)	*BARCH		
Community Development		MCD	
Construction Science	BS		
M&J SAMUEL BRAILSFORD COLLEGE OF ARTS AND SCIENCES			
Department of Biology			
Biology	BS	MS	
Bio-Environmental Toxicology		X	
Medical Technology	BS		
Department of Chemistry			
Chemistry	BS	MS	

Continued on next page

Note: X - Indicates area of specialization within broader degree.

** - Indicates a degree program that is in the process of being phased out.*

[] - Indicates a degree is available only within the area of specialization.

Source: Texas Higher Education Coordinating Board - Inventory of Approved Degree Programs.

Data as of March 1, 2007

Approved Degree Programs

Academic Year 2008-2009

Table Deg-1 (continued)

	<i>DEGREE LEVEL</i>		
	Baccalaureate	Masters	Doctoral
Department of Languages and Communications			
Communications	BA		
English	BA	MA	
Spanish	BA		
Department of Mathematics			
Mathematics	BS	MS	
Department of Music and Drama			
Drama	BA		
Music	BA		
Applied Music	[BM]		
Applied Music - Clarinet	X		
Applied Music - Euphonium	X		
Applied Music - Flute	X		
Applied Music - Percussion	X		
Applied Music - Piano	x		
Applied Music - Saxophone	X		
Applied Music - Trombone	X		
Applied Music - Trumpet	X		
Applied Music - Voice	X		
Department of Physics			
Physics	BS		

Continued on next page

Note: X - Indicates area of specialization within broader degree.

** - Indicates a degree program that is in the process of being phased out.*

[] - Indicates a degree is available only within the area of specialization.

Source: Texas Higher Education Coordinating Board - Inventory of Approved Degree Programs.

Approved Degree Programs

Academic Year 2008-2009

Table Deg-1 (continued)

	<i>DEGREE LEVEL</i>		
	Baccalaureate	Masters	Doctoral
Division of Social Work, Behavioral and Political Sciences			
History	BA		
Political Science	BA		
Social Work	BASW		
Sociology	BA	MA	
COLLEGE OF BUSINESS			
General Business Administration		MBA	
Department of Accounting, Finance and Management Information Systems			
Accounting	BBA	MS	
Finance	BBA		
Management Information Systems	BBA		
Department of Management and Marketing			
Management	BBA		
Marketing	BBA		
WHITLOWE RADCLIFFE GREEN COLLEGE OF EDUCATION			
Department of Curriculum and Instruction			
Curriculum and Instruction		MSED	MED
Agriculture Education		X	X
Educational Media and Technology			X
Elementary Education		X	X
English Education		X	X
Home Economics Education		X	X
Industrial Education		X	X
Mathematics Education		X	X

Continued on next page

Note: X - Indicates area of specialization within broader degree.

* - Indicates a degree program that is in the process of being phased out.

[] - Indicates a degree is available only within the area of specialization.

Source: Texas Higher Education Coordinating Board - Inventory of Approved Degree Programs.

Approved Degree Programs Academic Year 2008-2009

Table Deg-1 (continued)

	<i>DEGREE LEVEL</i>		
	Baccalaureate	Masters	Doctoral
Department of Curriculum and Instruction (continued)			
Curriculum and Instruction		MSED MED	
Music Education		X X	
Reading Education		X X	
Science Education		X X	
Interdisciplinary Studies	BSIS		
Special Education		MSED MED	
Industrial Technology Education	BSTCH		
Department of Health and Human Performance			
Health and Physical Education		[MED] [MS]	
H&PE - Health		X X	
H&PE - Physical Education		X X	
Health	BS		
Human Performance	BS		
Department of Educational Leadership and Counseling			
Educational Administration		MSED MED	
Educational Leadership			PhD
Ed Admn - Instructional Supervision		X X	
Counseling		MSED MA	
COLLEGE OF ENGINEERING			
Engineering		MSENGR	
Department of Chemical Engineering			
Chemical Engineering	BSCHE		
Department of Civil and Environmental Engineering			
Civil Engineering	BSCE		

Continued on next page

Note: X - Indicates area of specialization within broader degree.

* - Indicates a degree program that is in the process of being phased out.

[] - Indicates a degree is available only within the area of specialization.

Source: Texas Higher Education Coordinating Board - Inventory of Approved Degree Programs.

Approved Degree Programs

Academic Year 2008-2009

Table Deg-1 (continued)

	<i>DEGREE LEVEL</i>		
	Baccalaureate	Masters	Doctoral
Department of Computer Science			
Computer Science	BS	MS	
Computer Information Systems		MS	
Department of Electrical and Computer Engineering			
Computer Engineering	BS		
Electrical Engineering	BSEE	MSEE	PhD
Department of Engineering Technology			
Computer Aided Drafting and Design	BSIT		
Computer Engineering Technology	BSCET		
Electrical Engineering Technology	BSEET		
Department of Mechanical Engineering			
Mechanical Engineering	BSME		
COLLEGE OF JUVENILE JUSTICE AND PSYCHOLOGY			
Department of Justice Studies			
Criminal Justice	BSCJ		
Criminal Justice - Juvenile Justice	X		
Juvenile Justice		MSJJ	PhD
Department of Psychology			
Juvenile Forensic Psychology		MSJFP	
Clinical Adolescent Psychology			PhD
Psychology	BS		
COLLEGE OF NURSING			
Department of Nursing			
Nursing	BSN	[MSN]	
Nursing Administration		X	
Nursing Practitioner		X	
Nurse Education		X	

Note: X - Indicates area of specialization within broader degree.

* - Indicates a degree program that is in the process of being phased out.

[] - Indicates a degree is available only within the area of specialization.

Source: Texas Higher Education Coordinating Board - Inventory of Approved Degree Programs.

Total Degrees Awarded By Level/Gender AY 2003-2004 through 2007-2008

Table/Chart Deg-2

LEVEL/GENDER	2003-2004		2004-2005		2005-2006		2006-2007		2007-2008	
	(N)	(%)	(N)	(%)	(N)	(%)	(N)	(%)	(N)	(%)
UNDERGRADUATE										
Male	260	36	318	40	338	37	348	41	327	42
Female	461	64	477	60	566	63	503	59	460	58
GRADUATE										
Male	177	26	213	31	161	23	189	25	184	24
Female	508	74	465	69	552	77	568	75	581	76
TOTAL DEGREES AWARDED	1,406		1,473		1,617		1,608		1,552	

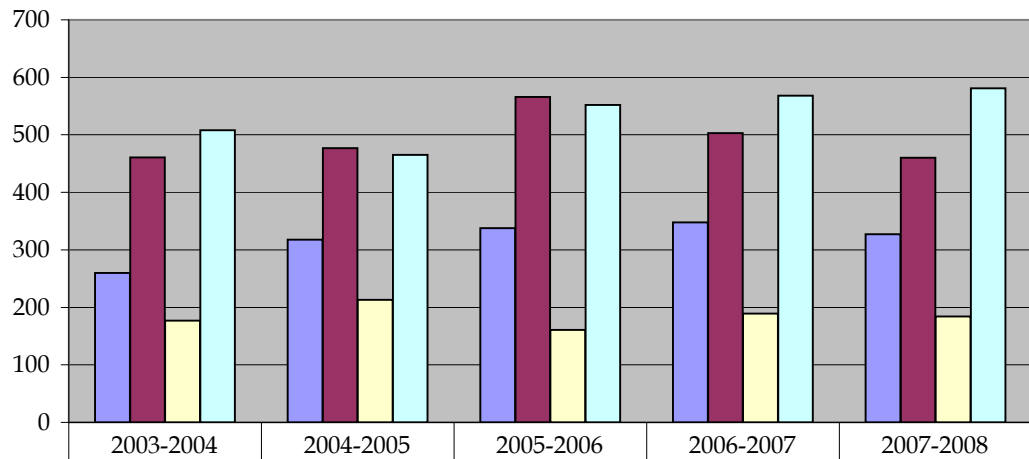
Undergraduate Total	721	51	795	54	904	56	851	53	787	51
Graduate Total	685	49	678	46	713	44	757	47	765	49

Male Total	437	31	531	36	531	36	537	33	511	33
Female Total	969	69	942	64	942	64	1,071	67	1,041	67

Note: Degree periods include December of beginning year; May and August of ending year.

Source: Texas Higher Education Coordinating Board - PREP online

Academic Year 2003 through 2007



Male Undergraduates	260	318	338	348	327
Female Undergraduates	461	477	566	503	460
Male Graduates	177	213	161	189	184
Female Graduates	508	465	552	568	581

Total Degrees Awarded By Ethnicity

Academic Year 2003-2004 through 2007-2008

Table/Chart Deg-3

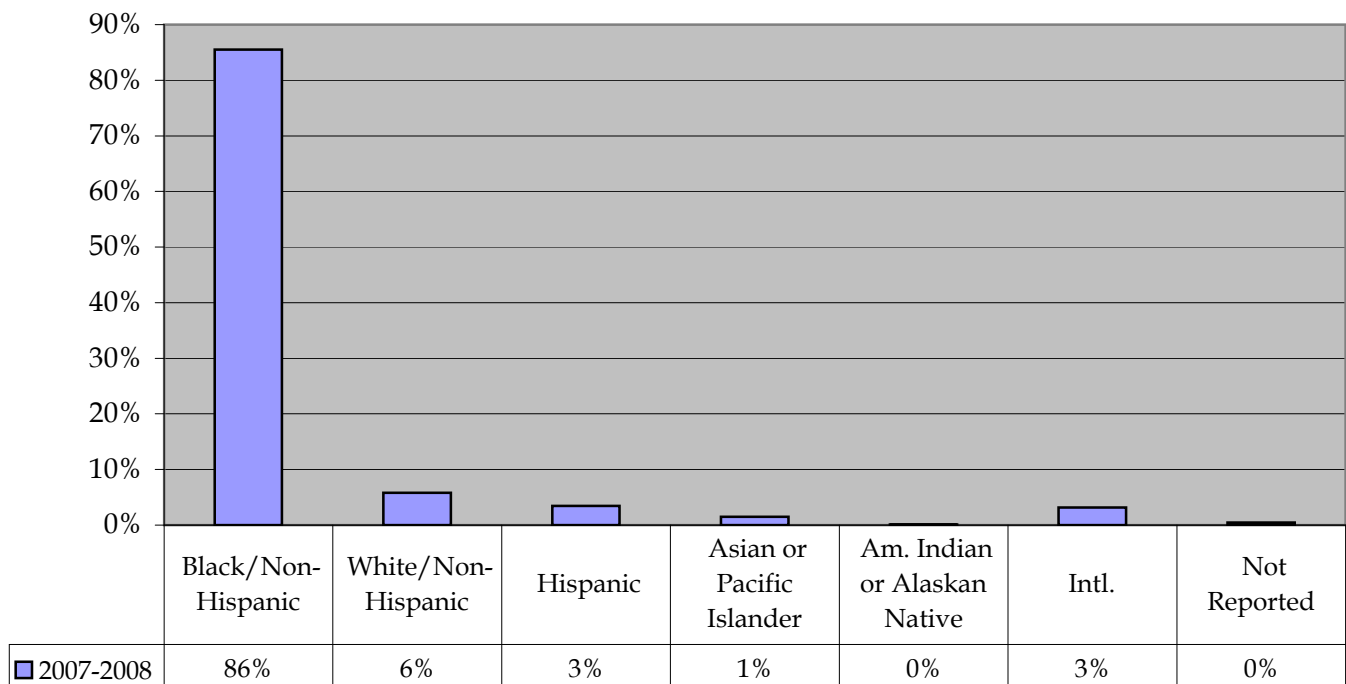
LEVEL	2003-2004		2004-2005		2005-2006		2006-2007		2007-2008	
	(N)	(%)	(N)	(%)	(N)	(%)	(N)	(%)	(N)	(%)
Black/Non-Hispanic	1,223	87	1,288	87	1,386	86	1,365	85	1,327	86
White/Non-Hispanic	101	7	90	6	123	8	102	6	90	6
Hispanic	32	2	38	3	51	3	63	4	54	3
Asian or Pacific Islander	17	1	20	1	17	1	27	2	23	1
Am. Indian or Alaskan Native	4	*	0	*	2	*	2	*	2	*
International	22	2	33	2	35	2	46	3	49	3
Not Reported	7	*	4	*	3	*	3	*	7	*
TOTALS	1,406		1,473		1,617		1,608		1,552	

* Denotes less than one percent. Percent columns show rounded figures and may not total 100%.

Note: Degree periods include December of beginning year; May and August of ending year.

Source: Texas Higher Education Coordinating Board - PREP Online

2007-2008



Undergraduate and Graduate Degrees Awarded

AY 2003-2004 through 2007-2008

College of Agriculture and Human Sciences

DEPARTMENT AND PROGRAM	ACADEMIC YEAR AND LEVEL															
	CIP CODES	2003-2004			2004-2005			2005-2006			2006-2007			2007-2008		
		U	M	D	U	M	D	U	M	D	U	M	D	U	M	D
AGRICULTURE, NUTRITION, AND HUMAN ECOLOGY																
Agriculture	01000000	17	---	---	22	---	---	29	0	---	23	0	---	22	0	---
Agricultural Economics	01010300	---	1	---	---	0	---	---	1	---	---	1	---	---	0	---
Animal Science	01090100	---	7	---	---	7	---	---	5	---	---	2	---	---	0	---
Soil Science	01120100	---	1	---	---	0	---	---	0	---	---	3	---	---	1	---
Human Sciences	19010100	---	20	---	---	25	---	---	47	---	---	24	---	---	25	---
Family and Community Services	19010100	4	---	---	5	---	---	18	---	---	4	---	---	3	---	---
Human Nutrition and Food	19050100	4	---	---	6	---	---	6	---	---	6	---	---	18	---	---
TOTALS		25	29	---	33	32	---	53	53	---	33	30	---	43	26	---

School of Architecture and Art

DEPARTMENT AND PROGRAM	ACADEMIC YEAR AND LEVEL															
	CIP CODES	2003-2004			2004-2005			2005-2006			2006-2007			2007-2008		
		U	M	D	U	M	D	U	M	D	U	M	D	U	M	D
ARCHITECTURE AND ART																
Architecture	04020100	33	8	---	23	13	---	32	7	---	24	4	---	47	10	---
Community Development	04030100	---	15	---	---	39	---	---	26	---	---	36	---	---	15	---
Construction Science	15100100	---	---	---	---	---	---	7	---	---	11	---	---	5	---	---
TOTALS		33	23	---	23	52	---	39	33	---	35	40	---	52	25	---

Note: Degree periods include fall of beginning year (December graduation), spring (May graduation) and summer (August graduation) of ending year.

Source: Texas Higher Education Coordinating Board PREP Online

Undergraduate and Graduate Degrees Awarded

College of Arts and Sciences

AY 2003-2004 through 2007-2008

Table Deg-6

DEPARTMENT AND PROGRAM	ACADEMIC YEAR AND LEVEL															
	CIP CODES	2003-2004			2004-2005			2005-2006			2006-2007			2007-2008		
		U	M	D	U	M	D	U	M	D	U	M	D	U	M	D
BIOLOGY																
Biology	26010100	50	0	---	50	0	---	64	0	---	43	0	---	56	0	---
Biology - Environmental Toxicology	26100400	---	0	---	---	0	---	---	0	---	---	0	---	---	0	---
Medical Technology	51100500	0	---	---	0	---	---	0	---	---	0	---	---	0	---	---
CHEMISTRY																
Chemistry	40050100	3	0	---	2	2	---	1	1	---	4	1	---	3	1	---
LANGUAGES AND COMMUNICATIONS																
Communications	09010100	25	---	---	35	---	---	40	---	---	37	---	---	53	---	---
English	23010100	18	0	---	11	0	---	14	0	---	8	0	---	11	0	---
Spanish	16090500	2	---	---	2	---	---	0	---	---	0	---	---	3	---	---
MATHEMATICS																
Mathematics	27010100	5	2	---	6	5	---	4	5	---	8	5	---	5	2	---
MUSIC and DRAMA																
Drama	50050100	5	---	---	8	---	---	12	---	---	4	---	---	4	---	---
Music	50090100	3	---	---	5	---	---	1	---	---	6	---	---	1	---	---
Applied Music																
Applied Music - Clarinet	50090302	0	---	---	0	---	---	0	---	---	0	---	---	0	---	---
Applied Music - Euphonium	50090301	0	---	---	0	---	---	0	---	---	1	---	---	1	---	---
Applied Music - Flute	50090302	0	---	---	0	---	---	1	---	---	3	---	---	1	---	---
Applied Music - Percussion	50090303	0	---	---	0	---	---	1	---	---	0	---	---	1	---	---
Applied Music - Piano	50090700	0	---	---	0	---	---	0	---	---	0	---	---	0	---	---
Applied Music - Saxophone	50090302	0	---	---	0	---	---	0	---	---	0	---	---	0	---	---
Applied Music - Trombone	50090301	0	---	---	0	---	---	0	---	---	0	---	---	0	---	---
Applied Music - Trumpet	50090301	0	---	---	0	---	---	0	---	---	0	---	---	0	---	---
Applied Music - Voice	50090800	1	---	---	1	---	---	1	---	---	0	---	---	0	---	---

Continued on next page.

Note: Degree periods include fall of beginning year (December graduation), spring (May graduation) and summer (August graduation) of ending year.

Source: Texas Higher Education Coordinating Board PREP Online

Undergraduate and Graduate Degrees Awarded

AY 2003-2004 through 2007-2008

College of Arts and Sciences (continued)

DEPARTMENT AND PROGRAM	ACADEMIC YEAR AND LEVEL															
	CIP CODES	2003-2004			2004-2005			2005-2006			2006-2007			2007-2008		
		U	M	D	U	M	D	U	M	D	U	M	D	U	M	D
PHYSICS																
Physics	40080100	0	---	---	1	---	---	1	---	---	0	---	---	0	---	---
SOCIAL WORK, BEHAVIORAL AND POLITICAL SCIENCE																
History	54010100	4	---	---	5	---	---	7	---	---	7	---	---	4	---	---
Political Science	45100100	17	---	---	5	---	---	17	---	---	6	---	---	12	---	---
Sociology	45110100	3	6	---	9	10	---	14	9	---	9	7	---	5	6	---
Social Work	44070100	17	---	---	12	---	---	12	---	---	24	---	---	19	---	---
TOTALS		153	8	---	152	17	---	190	15	---	160	13	---	179	9	---

College of Business

DEPARTMENT AND PROGRAM	ACADEMIC YEAR AND LEVEL															
	CIP CODES	2003-2004			2004-2005			2005-2006			2006-2007			2007-2008		
		U	M	D	U	M	D	U	M	D	U	M	D	U	M	D
GENERAL BUSINESS ADMINISTRATION																
General Business Administration	52020100	---	25	---	---	22	---	---	36	---	---	28	---	---	24	---
ACCOUNTING, FINANCE, AND MANAGEMENT INFORMATION SYSTEMS																
Accounting	52030100	15	---	---	21	4	---	22	6	---	27	4	---	20	8	---
Finance	52080100	10	---	---	11	---	---	14	---	---	12	---	---	9	---	---
Management Information Systems	52120100	56	---	---	45	---	---	32	---	---	37	---	---	15	---	---
MANAGEMENT AND MARKETING																
Management	52020100	35	---	---	43	---	---	50	---	---	33	---	---	29	---	---
Marketing	52140100	22	---	---	29	---	---	23	---	---	28	---	---	19	---	---
TOTALS		138	25	---	149	26	---	141	42	---	137	32	---	92	32	---

Note: Degree periods include fall of beginning year (December graduation), spring (May graduation) and summer (August graduation) of ending year.

Source: Texas Higher Education Coordinating Board PREP Online

Undergraduate and Graduate Degrees Awarded

AY 2003-2004 through 2007-2008

College of Education

DEPARTMENT AND PROGRAM	CIP CODES	ACADEMIC YEAR AND LEVEL														
		2003-2004			2004-2005			2005-2006			2006-2007			2007-2008		
		U	M	D	U	M	D	U	M	D	U	M	D	U	M	D
CURRICULUM AND INSTRUCTION																
Curriculum and Instruction	13030100	--	9	--	--	8	--	--	9	--	--	10	--	--	13	--
Agriculture Education	13130100	--	1	--	--	3	--	--	0	--	--	1	--	--	3	--
Education Media and Technology	13050100	--	6	--	--	12	--	--	4	--	--	1	--	--	4	--
Elementary Education	13120200	--	2	--	--	0	--	--	0	--	--	2	--	--	0	--
English Education	13130500	--	0	--	--	0	--	--	1	--	--	1	--	--	0	--
Home Economics Education	13130800	--	0	--	--	0	--	--	0	--	--	0	--	--	0	--
Industrial Education	13130900	--	0	--	--	0	--	--	1	--	--	0	--	--	1	--
Mathematics Education	13131100	--	3	--	--	1	--	--	2	--	--	1	--	--	0	--
Music Education	13131200	--	0	--	--	0	--	--	0	--	--	0	--	--	0	--
Reading Education	13131500	--	18	--	--	14	--	--	25	--	--	16	--	--	6	--
Science Education	13131600	--	0	--	--	0	--	--	0	--	--	0	--	--	0	--
Special Education	13100100	--	33	--	--	22	--	--	20	--	--	23	--	--	23	--
Industrial Technology	15061200	2	--	--	1	--	--	2	--	--	1	--	--	1	--	--
Interdisciplinary Studies	30999901	51	--	--	58	--	--	74	--	--	68	--	--	57	--	--
HEALTH AND HUMAN PERFORMANCE																
Health	51000001	37	--	--	43	--	--	47	--	--	31	--	--	32	--	--
Health Teacher Education	13130700	--	2	--	--	0	--	--	4	--	--	4	--	--	7	--
Human Performance	31050100	22	--	--	30	--	--	27	--	--	42	0	--	32	0	--
Physical Education	13131400	--	12	--	--	5	--	--	8	--	--	2	--	--	2	--
SCHOOL SERVICES																
Counseling (Counseling Education)	13110100	--	3	--	--	0	--	--	2	--	--	0	--	--	0	--
Counseling (Counseling Psychology)	42060100	--	256	--	--	219	--	--	249	--	--	268	--	--	262	--
Educ. Admin. and Instr. Supervision	13040100	--	212	--	--	219	--	--	201	--	--	255	5	--	274	5
TOTALS		112	557	--	132	503	--	150	526	--	142	584	--	122	595	5

Undergraduate and Graduate Degrees Awarded

AY 2003-2004 through 2007-2008

College of Nursing

DEPARTMENT AND PROGRAM	ACADEMIC YEAR AND LEVEL															
	CIP CODES	2003-2004			2004-2005			2005-2006			2006-2007			2007-2008		
		U	M	D	U	M	D	U	M	D	U	M	D	U	M	D
NURSING																
Nursing (BSN)	51160100	79	---	---	53	---	---	93	---	---	107	---	---	80	---	---
Nurse Administration	51160200	---	---	---	---	---	---	---	---	---	---	---	---	11	---	---
Nurse Practitioner	51160500	---	11	---	---	7	---	---	9	---	---	7	---	---	11	---
Nursing Education	51169960	---	---	---	---	---	---	---	---	---	---	3	---	---	4	---
TOTALS		79	11	---	53	7	---	93	9	---	107	10	---	80	26	---

Note: Degree periods include fall of beginning year (December graduation), spring (May graduation) and summer (August graduation) of ending year.

Source: Texas Higher Education Coordinating Board PREP Online

Undergraduate and Graduate Degrees Awarded

AY 2003-2004 through 2007-2008

College of Engineering

DEPARTMENT AND PROGRAM	ACADEMIC YEAR AND LEVEL															
	CIP CODES	2003-2004			2004-2005			2005-2006			2006-2007			2007-2008		
		U	M	D	U	M	D	U	M	D	U	M	D	U	M	D
GENERAL ENGINEERING																
General Engineering	14010100	---	8	---	---	11	---	---	8	---	---	11	---	---	11	---
CHEMICAL ENGINEERING																
Chemical Engineering	14070100	9	---	---	20	---	---	15	---	---	11	---	---	18	---	---
CIVIL ENGINEERING																
Civil Engineering	14080100	2	---	---	6	---	---	8	---	---	10	---	---	10	---	---
COMPUTER SCIENCE																
Computer Science	11010100	7	5	---	10	6	---	6	4	---	13	1	---	9	0	---
Computer Information Systems	11040100	---	---	---	---	4	---	---	2	---	---	1	---	---	3	---
ELECTRICAL ENGINEERING																
Computer Engineering	14090100	---	---	---	---	---	---	1	---	---	0	---	---	2	---	---
Electrical Engineering	14100100	14	7	---	37	1	0	39	1	0	32	3	1	30	10	1
ENGINEERING TECHNOLOGY																
Computer Aided Drafting and Design	15130100	1	---	---	2	---	---	0	---	---	1	---	---	0	---	---
Computer Engineering Technology	15120100	34	---	---	42	---	---	25	---	---	26	---	---	16	---	---
Electrical Engineering Technology	15030300	17	---	---	8	---	---	24	---	---	18	---	---	6	---	---
MECHANICAL ENGINEERING																
Mechanical Engineering	14190100	17	---	---	18	---	---	16	---	---	17	---	---	13	---	---
TOTALS		101	20	---	143	22	0	134	15	0	128	16	0	104	24	1

College of Juvenile Justice & Psychology

DEPARTMENT AND PROGRAM	ACADEMIC YEAR AND LEVEL															
	CIP CODES	2003-2004			2004-2005			2005-2006			2006-2007			2007-2008		
		U	M	D	U	M	D	U	M	D	U	M	D	U	M	D
JUVENILE JUSTICE																
Criminal Justice	43010400	36	---	---	58	---	---	55	---	---	50	---	---	54	---	---
Juvenile Justice	43019920	10	4	---	9	2	---	9	4	1	15	2	5	13	3	9
Criminal Justice - Juvenile Justice	43019920	---	---	---	---	---	---	---	---	---	---	---	---	---	---	---
PSYCHOLOGY																
Juvenile Forensic Psychology	42260100	---	8	---	---	11	---	---	15	---	---	14	---	---	10	---
Psychology	42010100	34	---	---	42	---	---	40	---	---	47	---	---	48	---	---
TOTALS		80	12	---	109	13	---	104	19	---	112	16	5	115	13	9

Note: Degree periods include fall of beginning year (December graduation), spring (May graduation) and summer (August graduation) of ending year.

Source: Texas Higher Education Coordinating Board PREP Online

Total Faculty Headcount Fall 2004 - Fall 2008

*Table Fac-1
Full-Time Equivalents*

TOTAL HEADCOUNT/ FULL-TIME EQUIVALENTS	FALL SEMESTERS				
	2004	2005	2006	2007	2008
Total Faculty Headcount	467	485	484	487	507
Total Faculty FTE	378	390	389	419	439

FTE by Rank

LEVEL	FALL SEMESTERS									
	2004		2005		2006		2007		2008	
	(N)	(%)	(N)	(%)	(N)	(%)	(N)	(%)	(N)	(%)
Professor	49	13	55	14	49	13	58	14	63	14
Associate Professor	67	18	66	17	66	17	75	18	81	18
Assistant Professor	97	26	87	22	86	22	85	20	80	18
Instructor	2	1	2	1	2	1	2	0	2	*
Lecturer/Other Faculty	158	42	171	44	178	46	194	46	206	47
Teaching Assistant	5	1	9	2	7	2	6	1	7	2
TOTALS	378		390		389		419		439	

* Denotes less than one percent. Percent columns show rounded figures and may not total 100%.

Note: In 1996, the Coordinating Board changed the definitions of the top four ranks to include only tenured or tenure-track faculty.

The category "Other" was modified in 1996 to include faculty without tenure and not on tenure track including but not limited to adjunct, special, visiting, emeritus, and lecturer at PVAMU. "Other" also includes faculty with tenure or on tenure track from another institution.

Source: Texas Higher Education Coordinating Board - PREP online

Faculty Headcount

Fall 2004 - Fall 2008

Table Fac-2

Total by Rank

RANK	FALL SEMESTERS									
	2004		2005		2006		2007		2008	
	(N)	(%)	(N)	(%)	(N)	(%)	(N)	(%)	(N)	(%)
Professor	66	14	69	14	65	13	58	12	64	13
Associate Professor	73	16	71	15	71	15	77	16	82	16
Assistant Professor	101	22	90	19	88	18	87	18	82	16
Instructor	3	1	2	*	2	*	2	*	2	*
Teaching Assistant	12	3	17	4	14	3	11	2	13	3
Other	212	45	236	49	244	50	252	52	264	52
TOTALS	467		485		484		487		507	

Total by Ethnicity

ETHNICITY	FALL SEMESTERS									
	2004		2005		2006		2007		2008	
	(N)	(%)	(N)	(%)	(N)	(%)	(N)	(%)	(N)	(%)
Black/Non-Hispanic	271	56	285	59	291	60	298	61	300	59
White/Non-Hispanic	109	22	111	23	105	22	100	21	106	21
Hispanic	12	2	14	3	15	3	10	2	13	3
Asian or Pacific Islander	64	13	64	13	63	13	67	14	64	13
Am. Indian or Alaskan Native	2	*	2	*	0	*	1	*	0	*
International	9	2	9	2	10	2	11	2	20	4
TOTALS	467		485		484		487		507	

Total by Gender

GENDER	FALL SEMESTERS									
	2004		2005		2006		2007		2008	
	(N)	(%)	(N)	(%)	(N)	(%)	(N)	(%)	(N)	(%)
Male	299	64	296	61	303	63	294	60	291	57
Female	168	36	189	39	181	37	193	40	216	43
TOTALS	467		485		484		487		507	

Source: Texas Higher Education Coordinating Board - PREP online

* Denotes less than one percent. Percent columns show rounded figures and may not total 100%.

Note: In 1996, the Coordinating Board changed the definitions of the top four ranks to include only tenured or tenure-track faculty.

The category "Other" was modified in 1996 to include faculty without tenure and not on tenure track including but not limited to adjunct, special, visiting, emeritus, and lecturer at PVAMU. "Other" also includes faculty with tenure or on tenure track from another institution.

Total by Ethnicity chart-4 unknown added to total.

Faculty Headcount (Other)

Fall 2004 - Fall 2008

Table Fac-3

Tenure Status

TENURE STATUS	FALL SEMESTERS									
	2004		2005		2006		2007		2008	
	(N)	(%)	(N)	(%)	(N)	(%)	(N)	(%)	(N)	(%)
Tenured	121	26	121	25	119	25	116	24	132	26
On Tenure Track *	123	26	111	23	107	22	108	22	98	19
Non-Tenured	223	48	253	52	258	53	263	54	277	55
TOTALS	467		485		484		487		507	

On Tenure Track by Rank

RANK	FALL SEMESTERS									
	2004		2005		2006		2007		2008	
	(N)	(%)	(N)	(%)	(N)	(%)	(N)	(%)	(N)	(%)
Professor	3	2	2	2	0	*	2	*	1	1
Associate Professor	26	21	19	17	19	18	19	18	17	17
Assistant Professor	91	75	88	79	86	80	85	79	78	80
Instructor	2	2	2	2	2	2	2	2	2	2
TOTALS	122		111		107		108		98	

Teaching Function Percentage

TEACHING FUNCTION PERCENTAGE	FALL SEMESTERS									
	2004		2005		2006		2007		2008	
	(N)	(%)	(N)	(%)	(N)	(%)	(N)	(%)	(N)	(%)
Less Than 25%	17	4	18	4	20	4	20	4	23	5
25% to 49%	44	9	39	8	45	9	55	11	73	14
50% to 74%	58	12	85	18	82	17	88	18	126	25
75% to 89%	35	7	25	5	27	6	34	7	77	15
90% to 100%	313	67	318	66	310	64	290	60	208	41
TOTALS	467		485		484		487		507	

* Denotes less than one percent. Percent columns show rounded figures and may not total 100%.

Note: In 1996, the Coordinating Board changed the definitions of the top four ranks to include only tenured or tenure-track faculty.

The category "Other" was modified in 1996 to include faculty without tenure and not on tenure track including but not limited to adjunct, special, visiting, emeritus, and lecturer at PVAMU. "Other" also includes faculty with tenure or on tenure track from another institution.

Source: Texas Higher Education Coordinating Board - PREP online

*2004 On Tenure Track includes (1) Other in headcount.

Tenured Faculty Fall 2004 - Fall 2008

*Table Fac-4
Tenured by Rank*

RANK	FALL SEMESTERS									
	2004		2005		2006		2007		2008	
	(N)	(%)	(N)	(%)	(N)	(%)	(N)	(%)	(N)	(%)
Professor	63	52	67	55	65	55	56	48	63	48
Associate Professor	47	39	52	43	52	44	58	50	65	49
Assistant Professor	10	8	2	2	2	2	2	2	4	3
Instructor	1	1	0	*	0	*	0	*	0	*
TOTALS	121		121		119		116		132	

Tenured by Ethnicity

ETHNICITY	FALL SEMESTERS									
	2004		2005		2006		2007		2008	
	(N)	(%)	(N)	(%)	(N)	(%)	(N)	(%)	(N)	(%)
Black/Non-Hispanic	82	68	80	66	79	66	72	62	74	56
White/Non-Hispanic	13	11	13	11	12	10	15	13	20	15
Hispanic	1	1	1	1	1	1	1	1	3	2
Asian or Pacific Islander	25	21	26	21	26	22	26	22	26	20
Am. Indian or Alaskan Native	0	*	0	*	0	*	0	*	0	*
International	0	*	1	1	1	1	2	2	7	5
Unknown	0	*	0	*	0	*	0	*	2	2
TOTALS	121		121		119		116		132	

Tenured by Gender

GENDER	FALL SEMESTERS									
	2004		2005		2006		2007		2008	
	(N)	(%)	(N)	(%)	(N)	(%)	(N)	(%)	(N)	(%)
Male	90	74	93	77	94	79	90	78	99	75
Female	31	26	28	23	25	21	26	22	33	25
TOTALS	121		121		119		116		132	

Source: Texas Higher Education Coordinating Board - PREP online

* Denotes less than one percent. Percent columns show rounded figures and may not total 100%.

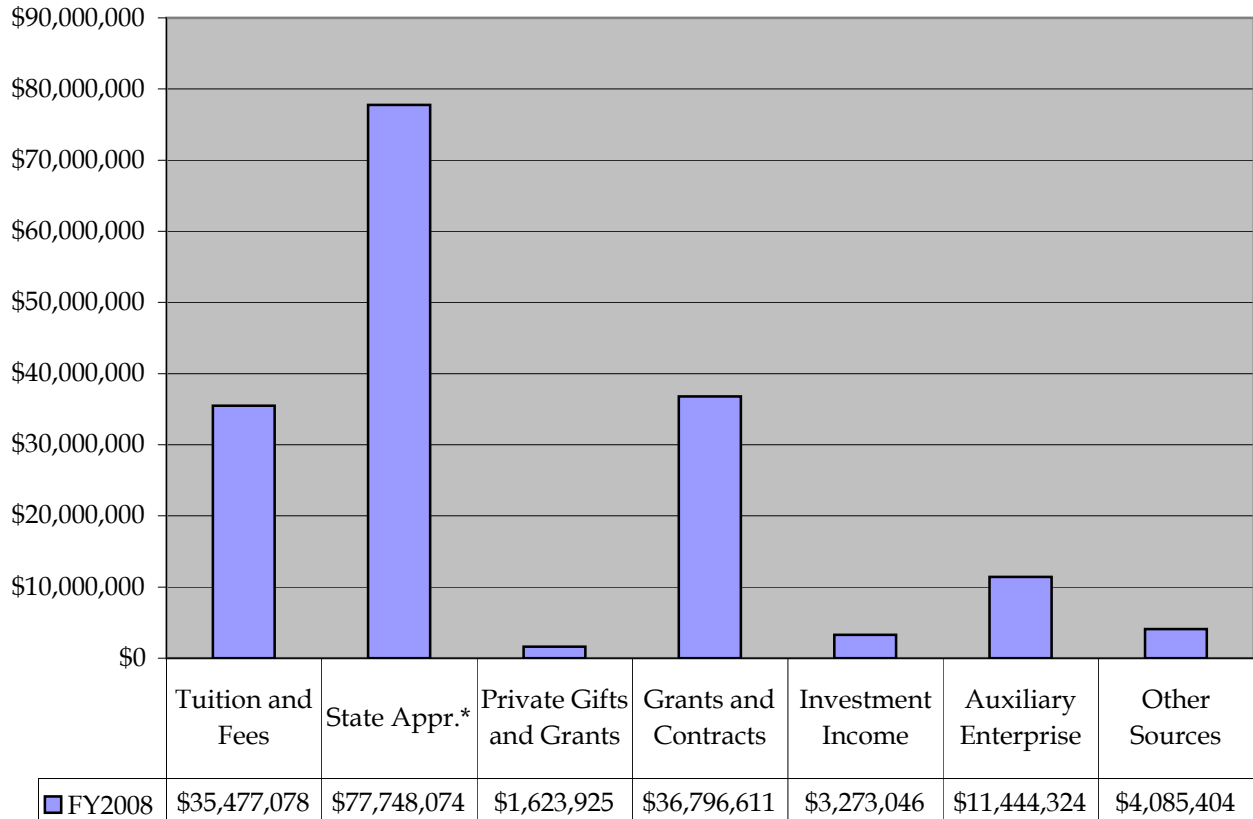
Note: In 1996, the Coordinating Board changed the definitions of the top four ranks to include only tenured or tenure-track faculty.

The category "Other" was modified in 1996 to include faculty without tenure and not on tenure track including but not limited to adjunct, special, visiting, emeritus, and lecturer at PVAMU. "Other" also includes faculty with tenure or on tenure track from another institution.

* Tenured by Ethnicity chart-2 unknown added to total.

Current Funds Revenues and Transfers Fiscal Year 2008

Chart Fis-1



(N = \$170,448,462)

Note: Fiscal Year begins on September 1, 2007 and ends on August 31, 2008.

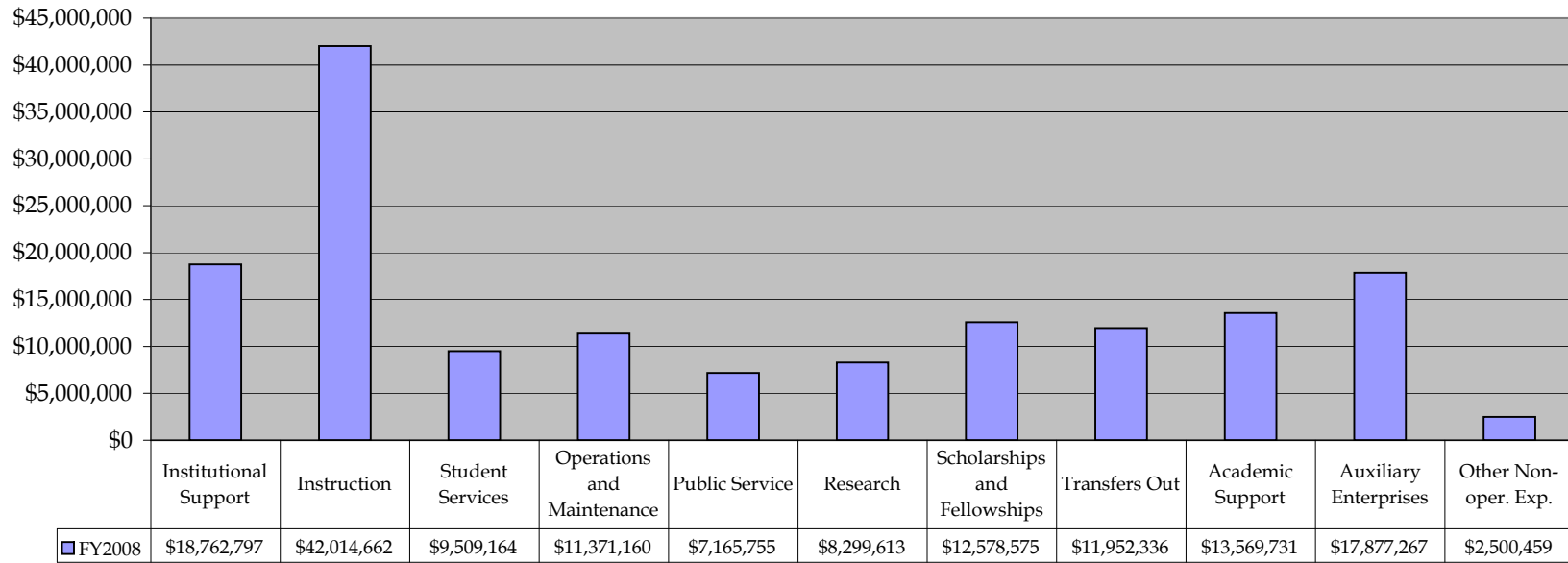
Current funds are the operating funds of the institution, normally to be expended in one fiscal year for teaching, research and service activities. Current funds generally include restricted and unrestricted funds, with the unrestricted funds carrying special importance for flexibility in reallocations.

Source: AFR- Fiscal Year 2008

** Includes AUF transferred from the Texas A&M University System*

Current Funds Expenditures and Transfers Fiscal Year 2008

Chart Fis-2



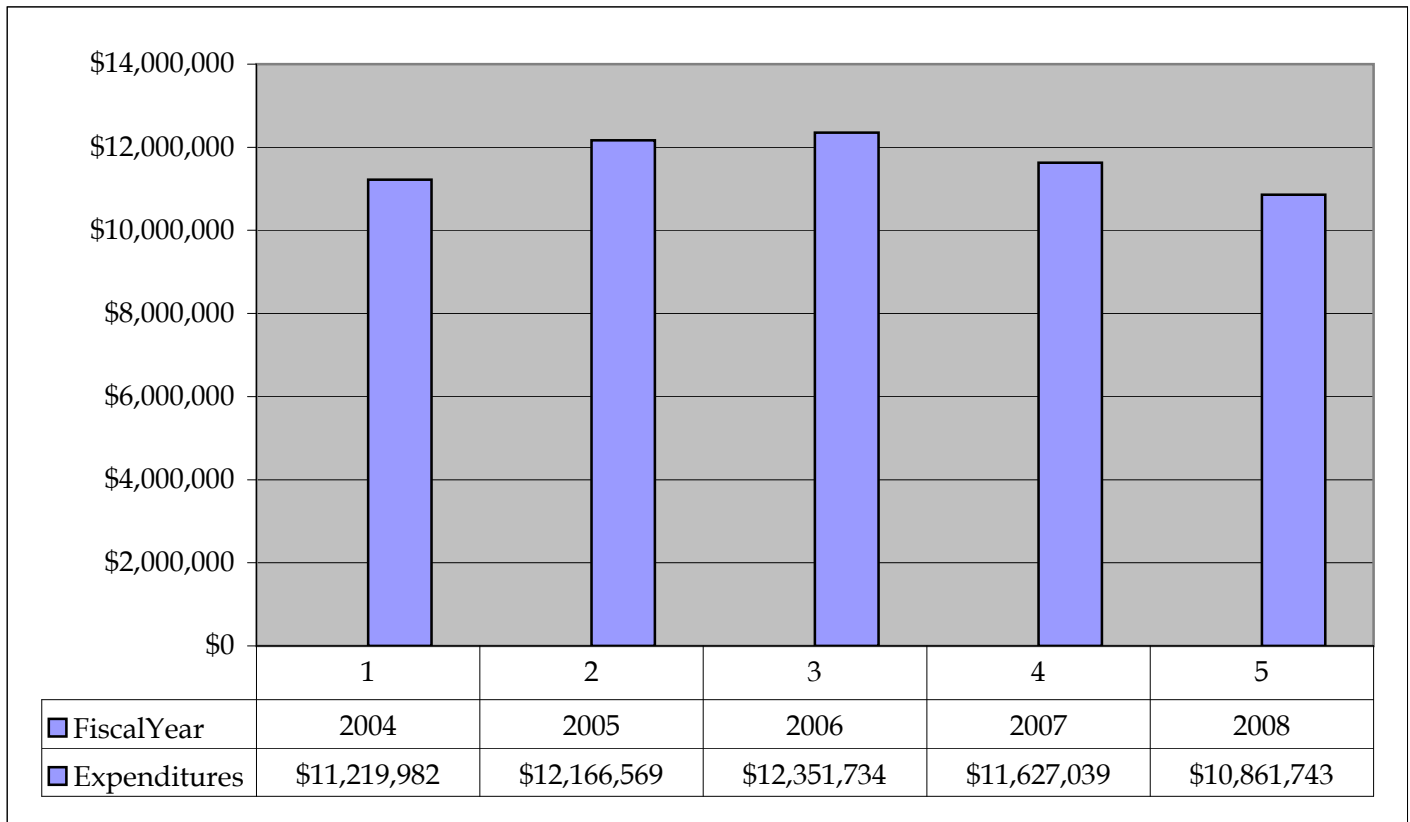
(N = \$ 155,601,519)

*Note: Fiscal Year begins on September 1, 2007 and ends on August 31, 2008.
Current funds are the operating funds of the institution, normally to be expended in one fiscal year for teaching, research and service activities. Current funds generally include restricted and unrestricted funds, with the unrestricted funds carrying special importance for flexibility in reallocations.
Source: AFR-Fiscal Year 2008*

Funded Research Expenditures

Fiscal Years 2004 through 2008

Chart Fis-3



Note: Fiscal Years begin on September 1st and end on August 31st.

Source: Texas Higher Education Coordinating Board - Survey of Research Expenditures

Total Full-Time Staff by Occupational Activity

Fall 2004 - Fall 2008

Table/Chart Staff-1

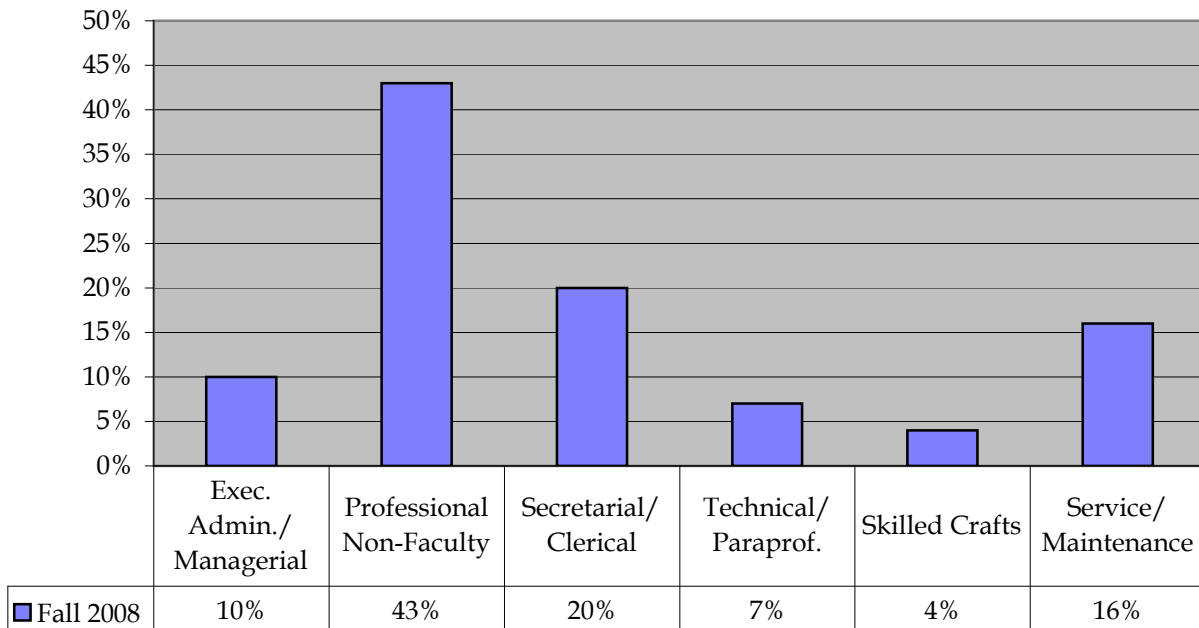
OCCUPATIONAL ACTIVITY	FALL SEMESTERS									
	2004		2005		2006		2007		2008	
	(N)	(%)	(N)	(%)	(N)	(%)	(N)	(%)	(N)	(%)
Executive Admin./Managerial	62	8	39	5	64	9	66	9	44	10
Professional Non-Faculty	330	45	346	47	332	46	314	46	302	43
Secretarial/Clerical	127	17	132	18	127	17	121	18	140	20
Technical/Paraprofessional	84	11	87	12	86	12	83	12	44	7
Skilled Crafts	15	2	13	2	6	1	5	1	26	4
Service/Maintenance	117	16	125	17	113	16	97	14	114	16
TOTALS	735		742		728		686		670	

Note: Percent columns show rounded figures and may not total 100%.

The above figures do not include vendors and contract personnel

Sources: Texas State Auditor's Office, Quarterly FTE Report

Fall 2008



Total Full-Time Staff by Gender

Fall 2004 - Fall 2008

Table/Chart Staff-2

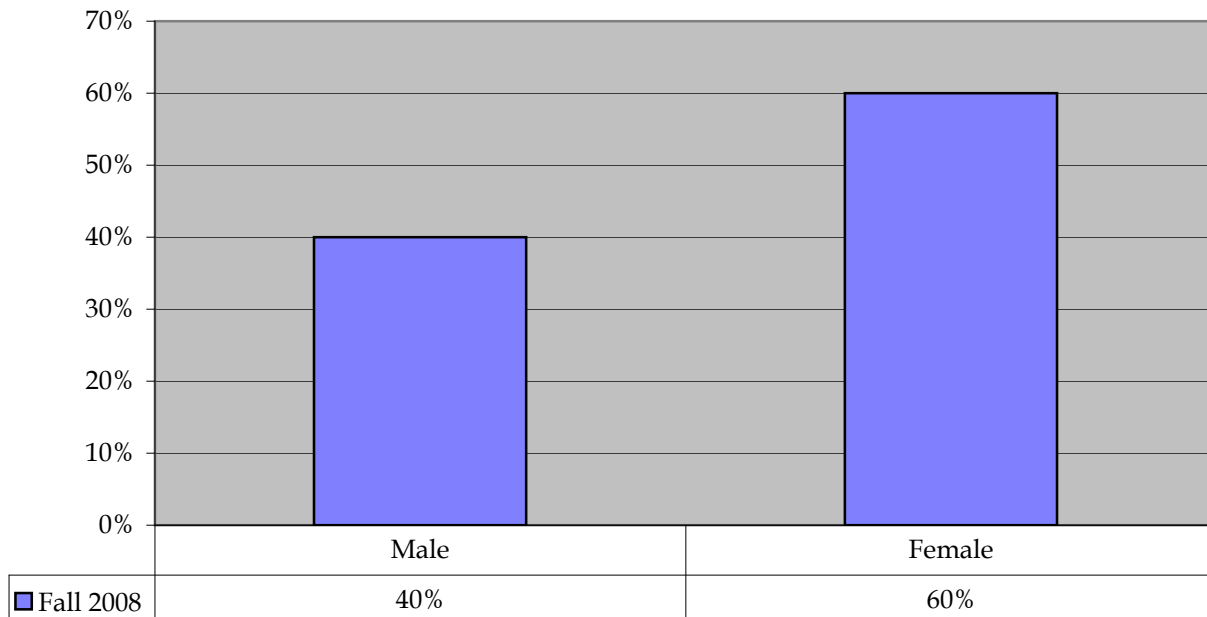
GENDER	FALL SEMESTERS									
	2004		2005		2006		2007		2008	
	(N)	(%)	(N)	(%)	(N)	(%)	(N)	(%)	(N)	(%)
Male	317	43	323	44	313	43	285	42	271	40
Female	418	57	419	56	415	57	401	58	399	60
TOTALS	735		742		728		686		670	

Note: Percent columns show rounded figures and may not total 100%.

The above figures do not include vendors and contract personnel

Sources: Texas State Auditor's Office, Quarterly FTE Report

Fall 2008



Total Full-Time Staff by Ethnicity

Fall 2004 - Fall 2008

Table/Chart Staff-3

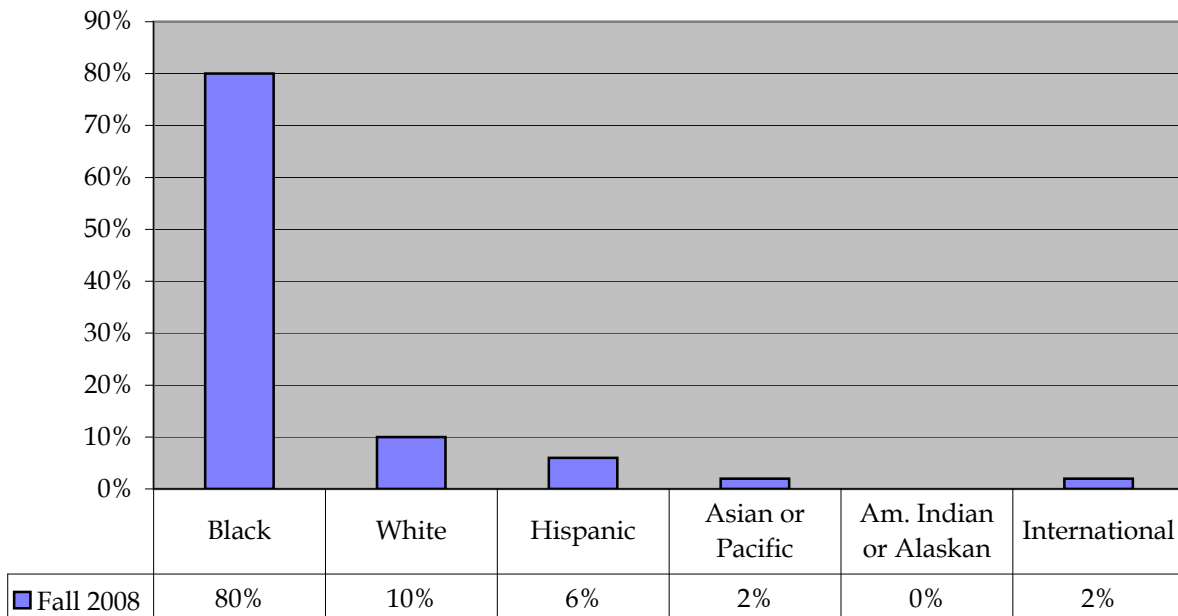
ETHNICITY	FALL SEMESTERS									
	2004		2005		2006		2007		2008	
	(N)	(%)	(N)	(%)	(N)	(%)	(N)	(%)	(N)	(%)
Black/Non-Hispanic	583	79	596	80	592	81	552	80	533	80
White/Non-Hispanic	90	12	78	11	69	9	69	10	67	10
Hispanic	34	5	39	5	39	5	35	5	38	6
Asian or Pacific Islander	28	4	18	2	28	4	30	4	14	2
Am. Indian or Alaskan Native	0	*	1	*	0	*	0	*	0	*
International	0	*	10	1	0	*	0	*	18	2
TOTALS	735		742		728		686		670	

* Denotes less than one percent. Percent columns show rounded figures and may not total 100%.

The above figures do not include vendors and contract personnel, e.g. Bookstore and Information Technology

Sources: Texas State Auditor's Office, Quarterly FTE Report

Fall 2008



Total Library Holdings

Academic Years 2003-2004 through 2007-2008

Table/Chart Lib-1

HOLDINGS	ACADEMIC YEARS									
	2003-2004		2004-2005		2005-2006		2006-2007		2007-2008	
	(N)	(%)	(N)	(%)	(N)	(%)	(N)	(%)	(N)	(%)
Print Materials										
Monographic Titles	347,477	31	356,594	31	361,604	32	367,311	32	372,474	32
Government Documents	29,300	3	30,251	3	31,494	3	33,594	3	36,298	3
Print Subscriptions										
Number of Subscriptions	8,430	1	8,520	1	8,230	1	7,564	1	7,580	1
Non-Print Materials										
ebooks	33,234	3	33,643	3	33,733	3	33,733	3	33,733	3
Microforms	690,429	62	696,775	61	702,158	61	706,024	61	708,072	61
Manuscripts and Archives	3,041	*	3,041	*	*	*	*	*	*	*
Cartographic Materials	6	*	6	*	6	*	6	*	6	*
Graphic Materials	2,086	*	0	*	0	*	0	*	0	*
Audio Materials	930	*	0	*	0	*	0	*	0	*
Films and Videos	2,897	*	2,946	*	2,986	*	3,067	*	3,148	*
Machine-Readable Materials	2,736	*	2,808	*	2,869	*	2,872	*	2,873	*
TOTALS	1,120,566		1,134,584		1,143,080		1,154,171		1,164,184	

* Denotes less than one percent. Percent columns show rounded figures and may not total 100%.

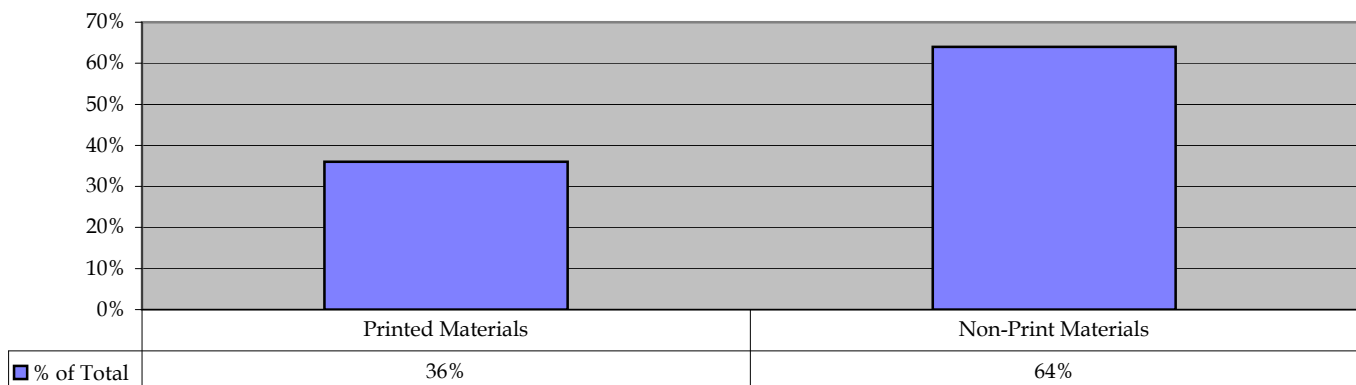
"Books and Periodicals" includes books, serial backfiles, and government documents that are cataloged.

"Subscriptions" includes current periodicals, newspapers, and government documents issued in successive parts usually at regular intervals.

"Non-Print Materials" includes materials that require magnification, materials that require a computer, typed materials, or handwritten materials.

Source: Prairie View A&M University, John B. Coleman Library.

Total Holdings



Library Services

Academic Years 2003-2004 through 2007-2008

Table Lib-2

Interlibrary Loans

SERVICES	ACADEMIC YEARS									
	2003-2004		2004-2005		2005-2006		2006-2007		2007-2008	
	(N)	%	(N)	%	(N)	%	(N)	%	(N)	%
Circulation Transactions										
General Collection	13,413	74	14,509	67	14,530	64	13,086	65	13,264	71
Reserve Collection	4,830	26	7,205	33	8,272	36	7,180	35	5,334	29
TOTALS	18,243		21,714		22,802		20,266		18,598	
Interlibrary Loans										
To Other Libraries	850	48	1,735	66	2,013	73	1,906	70	1,853	66
From Other Libraries	924	52	884	34	751	27	816	30	948	34
TOTALS	1,774		2,619		2,764		2,722		2,801	
Information Services To Groups										
People Served	4,745		5,227		6,731		5,296		6,498	
Gate Count										
Public Service Hours	83		103		95		95		97	
Gate Count	316,157		453,122		370,748		396,978		331,610	

"People Served" is the number of people who attended library instruction presentations held in the Library.

Source: Prairie View A&M University, John B. Coleman Library.

"Public Service Hours" is the number of hours per week that the Library is open.

"Gate Count" is the number of people physically entering the Library. Individuals can be counted more than once.

Total Library Operating Expenditures

Academic Years 2003-2004 through 2007-2008

Table/Chart Lib-3

EXPENSES	ACADEMIC YEARS				
	2003-2004	2004-2005	2005-2006	2006-2007	2007-2008
	(N)	(N)	(N)	(N)	(N)
Salaries and Wages	\$ 985,891	\$ 924,638	\$ 913,883	\$ 988,195	\$ 1,046,441
Collections	596,514	556,395	304,246	613,573	551,086
Current Serials	140,397	214,585	193,172	189,653	199,172
Microforms	45,060	51,569	49,632	27,798	29,295
Audiovisual Materials	8,879	5,786	17,757	16,133	7,668
Electronic Resources	531,958	617,952	600,999	580,416	732,989
Document Delivery and Interlibrary Loans	3,200	5,272	4,590	5,318	5,752
Staff Development	22,215	20,774	16,546	39,641	31,212
Preservation and Bindery	1,527	0	807	2,834	4,311
Furniture and Equipment	59,973	86,338	18,782	30,402	14,962
Contracted Computer Services	78,504	145,807	161,708	99,812	147,751
Renovation, 4th Floor	227,714	0	6,477	0	0
Limited Editions	19,500	0	0	0	0
Surveillance System	0	0	0	0	67,728
Lecture Series, 4th Floor Program	55,950	15,973	2,752	10,529	5,153
All Other Operating Expenses	51,897	80,503	42,292	114,499	265,182
TOTALS	\$ 2,829,179	\$ 2,725,592	\$ 2,333,643	\$ 2,718,803	\$ 3,108,702

"Salaries/Wages" includes librarians, professional staff, student assistants, and all other paid staff. Excludes fringe benefits.

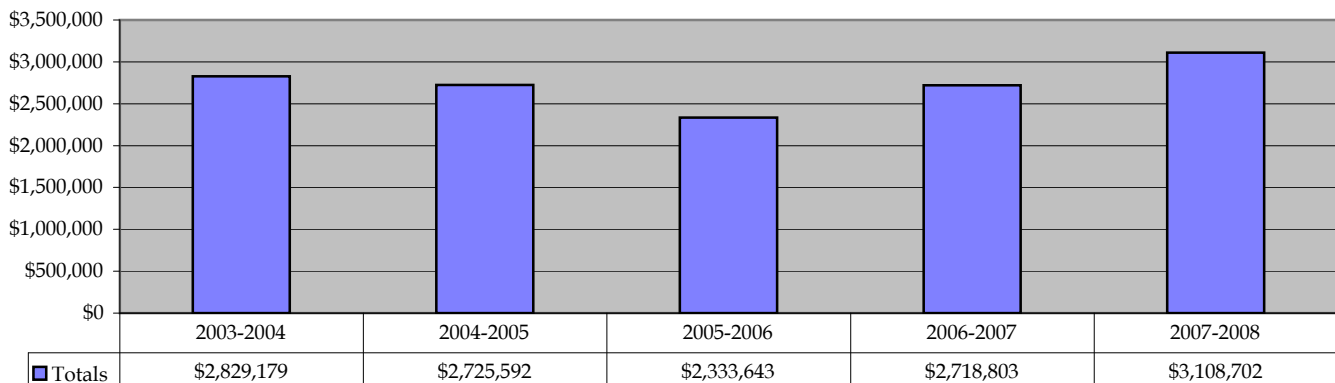
"Collections" includes books, serial backfiles, and other printed materials. Excludes current serials.

"Current Serials" excludes microforms, audiovisual, and machine-readable materials.

"Furniture/Equipment" includes computer equipment.

Source: John B. Coleman Library, Prairie View A&M University

Total Operating Expenditures



Major Campus Buildings Fall 2008

Prairie View A&M University is located approximately 45 miles from downtown Houston, the fourth most populous city in the United States. The main 1500-acre campus is situated in the city of Prairie View in the heart of semi-rural Waller County. In addition to the main campus, the College of Nursing building is located in the heart of the world-renowned Texas Medical Center in Houston. Classes are also held at sites throughout the region, including the Klein area of Northwest Houston, the University Center in The Woodlands, Huntsville Memorial Hospital, and College Station.

Table Hou-1

Building			
	Building Number	Year Opened	Gross Square Footage
Fry-Thomas Power Plant	529	1916	11,430
G. R. Woolfolk Soc & Pol Science	503	1932	16,540
Hilliard Hall-Communication	537	1939	38,346
W. R. Banks Building	508	1945	57,225
Alvin I. Thomas Administration Building	501	1949	19,588
Gilchrist Engineering	504	1952	23,213
Jesse M. Drew Memorial Complex	535	1955	11,058
L.O. Evans Building	556	1955	17,460
M.T. Harrington Science	668	1961	59,463
William J. "Billy" Nicks	669	1964	100,768
Hobart Thomas Taylor Sr. Hall	689	1976	100,158
Owens-Franklin Health Clinic	688	1977	36,397
C.L. Wilson Engineering Complex	704	1978	63,268
International Goat Research Center	707	1983	7,920
Austin Greaux Chemical Engineering	724	1984	12,934
Wilhelmina Delco (Education Building)	742	1986	58,422
Sam R. Collins Engineering Technology	743	1987	78,945
John B. Coleman Library	744	1988	149,095
E. E. O'Banion Science Building	790	2001	166,629
Willie A. Tempton Memorial Student Center	779	2003	126,083
Nathelyne Archie Kennedy Building	783	2005	103,421
Electrical Engineering Building	793	2005	48,787
Don K. Clark Building	789	2006	57,514
Nursing Building	833	2006	552,849

Source: Texas Higher Education Coordinating Board-Facilities Inventory

Prepared by

**Office
of
Institutional Research**

**Jesse M. Drew Memorial Complex, 2nd Floor
P.O. Box 519, MS #1341
Prairie View A&M University
Prairie View, Texas 77446**

Phone:(936) 261-2188

Fax: (936) 261-2189

<http://www.pvamu.edu>

Dr. Dean Williamson, Director
Anthony Adam, Assistant Director
Cynthia McDade, Research Associate
Ginger Philips, Data Analyst
Iris Sawyer, Data Analyst
Paula Williams, Data Analyst

cdwilliamson@pvamu.edu
ajadam@pvamu.edu
cdmcdade@pvamu.edu
gmpilips@pvamu.edu
irsawyer@pvamu.edu
pjwilliams@pvamu.edu