



## INSIDE THIS ISSUE:

Benchmarks	2
Coming Events	2
Dark Fiber	3
Outlook Tips	3
Did You Know?	3
ITS Web Page	4
Computer Lab Hours	4

## Clean Access is Sweeping the Campus

As part of the ITS commitment to improving protection for our users, computers, servers, and infrastructure, we will be deploying Clean Access on all wireless networks supported through ITS on all PVAMU campus.

Clean Access is a solution provided by Cisco, Inc. that allows the University to ensure network users are safe while on the network. Clean Access Agent is a small program that runs on your PC that performs network validation. The software performs the following functions:

- Requires authentication to the network
- Validates whether the system connecting to the network meets the minimum security standards.
- Quarantines the system until it meets the minimum security standards.
- Provides access to the remediation sites. Once the system is validated as "clean", allows access to the network.

Users will be required to validate and authenticate access to the university network. The user will not be able to access the network

until they have "authenticated" (or told the network who they are). The process will begin by opening an Internet browser window and being redirected to an authentication page. Once the user has typed their PVAMU username and password they will be prompted to download and install the validation client, called Cisco Clean Access. After the process is complete, the user will be logged into the network. If validation fails, the user will be redirected to remediation sites from which they can download security patches and/or antivirus software. Please note that Antivirus software must be downloaded, installed and running on the computer. It is also important to keep up with any and all security patches and Windows Updates. This will help keep the computer free of worms and harmful viruses!

Cisco Clean Access **will not collect any personal information**, only information regarding the security of the system. In turn, this will greatly reduce the spread of viruses across the network and help keep your information safe and your computing experience enjoyable.

## CIO Profile - Luis-Pablo Grijalva

Luis-Pablo Grijalva, joined Prairie View A&M University in mid-March, bringing several years of international experience in consulting and management with him. He is a conceptual and strategic thinker which will enable him to provide the technology leadership and direction required to support the implementation of the Information Technology Service's strategic plan.

"This is an exciting time to be here," Mr. Gri-

jalva said. "With the changes that are taking place in technology, the opportunity to make a difference has never been greater."

When Luis-Pablo is not working for ITS, he enjoys swimming, bicycling, and kayaking with his wife and fraternal twins.



Luis-Pablo Grijalva

# Benchmarks Update



By Christa Malloy



Nursing Student Taking Notes on her Tablet PC

The first Go-Live date for Recruitment and Admissions is September 17, 2007. "The project team has worked very hard for this day and we are very excited." said Elliot Kimbrough, Applications Director.

The BENCHMARKS team is made up of university leaders, members of the on-site SunGard HE Managed Services staff, a SunGard Project Manager, and, Accounts Receivable, Financial Aid, Student, and Alumni Consultants. The implementation team have participated in more than 310 hours of Banner training, attend weekly implementation and work teams meetings, work on project tasks, as well as handling their current daily.

The enhancements over our current system will include:

- Web for Prospects site in which prospective students can go on-line to provide their demographic data and share their interest in the University.
- Electronic application submission via the Apply Texas website
- Automated Decision processing for the Graduate School and Undergraduate Admissions
- Web for Admissions site in which student's can check on the status of their application
- Assignment and notification of a University email address for newly admitted students

For more information on the BENCHMARKS project go to our website: [www.pvamu.edu/Benchmarks/](http://www.pvamu.edu/Benchmarks/)

## Coming Events

- Installation of Clean Access for the wireless network. (see page 1)
- Installation of a new Web Directory that will allow for automatic updates and organized searches.
- Installation of WebCT 6, offering better Distance Learning tools to the PVAMU campus.
- BENCHMARKS Implementation Phase I Admissions and Recruitment modules

## Did You Know?

- ITS processes 4 million emails a week, but only 3% are legitimate.
- ITS closes on average 1,722 Help Desk tickets a month.
- 50% of today's 21 year olds have created content on the web.
- Today's 21 year olds have sent or received 250,000 email or instant messages
- 70% of US 4year olds have used a computer.
- There were more than 2.7 billion searches preformed on Google last month.
- More than 230,000 new users signed up for MySpace.com today.

Statistics from <http://www.teachertube.com/>



Student checks her email at the MSC Internet

# Dark Fiber Goes Light



The demand for Internet bandwidth has steadily grown as advances in computing speed and increasingly innovative software applications encourage faculty, staff, and students to utilize online environments in their work. Projecting these two trends over the next decade demonstrates that the schools' current arrangement for obtaining network bandwidth is not sustainable in the near future.

"Prairie View A&M University has expressed a strategic intent to provide a robust high performance wide area network backbone, which provides redundant connectivity between its three campuses and the Internet", said Rodney Moore, Director of Networking at Prairie View A & M University, in response to these issues.

In addition to creating faster and more reliable connections, the Dark Fiber Network boosts

the cost effectiveness and flexibility of the institutions' computer networks. At PVAMU, the new technology essentially doubles the capacity of its commercial Internet service; enhances its flexibility in future purchasing of networking technology; and affords greater security of network connections in the event of damage to critical infrastructure. The network is called "dark fiber" because no telecommunications carrier is "lighting" it with its equipment; instead, PVAMU "lights" its fiber strands with its own equipment, just as it does for on- and near-campus fiber cables.

Unlike telecommunications carrier services, which have costs that vary by speed, the price of the fiber is fixed while its capability is virtually unlimited. Owning the fiber strands will allow PVAMU to choose and afford new network technologies as they develop,

## Quick Reference

### To Manually Archive Items:

1. Select **File** → **Archive** from the menu.
2. Ensure the **Archive This Folder and all subfolders** option is selected.
3. Select the folder that you want to archive.
4. Click the **Archive items older than** list arrow and select the date to specify how old items must be in order to be archived.
5. (Optional) Specify the name and location of the archive

## Outlook Quick Tips



### Give Your Email a Quick Cleanup

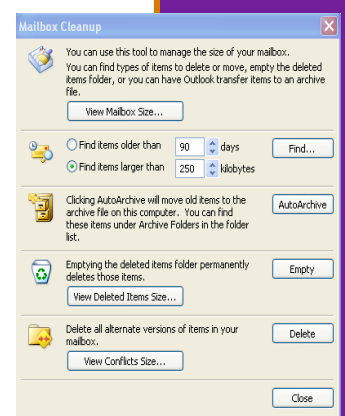
To make your computer run more efficiently, give your mailbox a quick cleanup.

- On the **Tools** menu, click **Mailbox Cleanup**.
- Before you begin, click **View Mailbox Size** (at top) to see the current size of your mailbox.
- Below that, select options to find mail items that are either old or large.
- Click **Find** to see a list of these items.
- To review an individual mail item and its attachments, double-click on it.

- Now you can more easily decide whether to move or delete that item.
- After permanently deleting items, click **View Mailbox Size** again to check your progress.

**Note:** When you delete an email message, it goes into your **Deleted Items** folder. You must delete a second time from that folder to permanently remove it and reduce the size of your mailbox.

For more training tips go to the ITS web page <http://www.pvamu.edu/pages/2509.asp>



# Check Out The New ITS Web

The screenshot shows the Prairie View A&M University Business Affairs website. The header includes the university logo and name. The navigation bar contains links for Home, Calendar, Academic & Student Affairs, President's Office, Directory, and JOBS@PVAMU. The main content area is divided into several sections: 'Business Affairs' with a list of links, 'Information Technology Services' with a dropdown menu, 'Information Technology News and Announcements' with recent news items, 'ITS Newsletters' with subscription options, and four columns of quick links for Students, Faculty & Staff, FAQs, and Quick Links.

<http://pvamu.edu/pages/234.asp>



Students working in the J. B Colman Student Computer Lab

## Student Computer Lab Hours

Building & Room	Normal Hours of Operation	
<b>J.B Colman Library 2nd Floor, RM 210</b>	Mon -Thu:	7:00am - 12:00am
	Fri and Sat:	8:00am - 5:00pm
	Sun:	1:00pm - 12:00am
<b>Farrell Hall</b>	Mon -Thu:	10:00am - 1:00am
	Friday:	10:00am - 5:00pm
	Saturday:	10:00am - 6:00pm
	Sunday:	3:00pm - 1:00am
<b>Internet Café MSC</b>	Mon -Thu:	8:00am - 5:00pm
	Friday:	8:00am - 5:00pm
	Saturday:	Closed
	Sunday:	Closed
<b>Nursing Labs 9th Floor Lab 1 &amp; 2</b>	Mon -Thu:	7:00am -12:00am
	Friday:	7:30am - 10:00pm
	Saturday:	8:00am - 8:00pm
	Sunday:	12:00pm - 10:00pm
<b>Graduate School Spring, Texas</b>	Mon -Thu:	10:30am -7:30pm
	Friday:	Closed
	Saturday:	8:00am -12:00pm
	Sunday:	Closed

Lab operational hours are subject to change based on University special events, holidays and other planning criteria