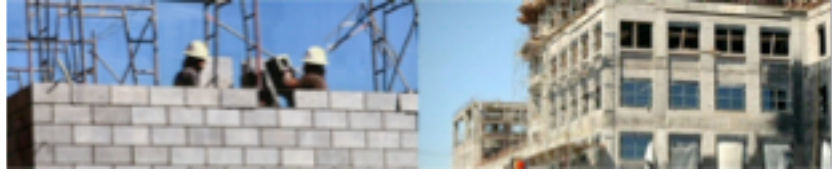


TEXAS HIGHER EDUCATION COORDINATING BOARD

Campus Planning



Search Results Facilities Inventory - Buildings

Prairie View A&M University (003630) - 2005

Number	Name	Type	Loc.	Cond.	Own	Const.	Initial Cost	Year	Floors	Rooms	Perimeter	GSF	NASF	E&G
0501	ALVIN I THOMAS BUILDING	1	1	1	1	3	\$3,777,968	1949	3	106	480	19,588	12,203	12,203
0503	G R WOOLFOLK SOC & POL SCI BUILDING	1	1	1	1	9	\$1,874,898	1932	3	43	336	16,540	10,023	10,023
0504	GILCHRIST ENGINEERING BUILDING	1	1	1	1	5	\$2,823,564	1952	2	39	491	23,213	7,910	7,910
0506	THOMAS E GRAY CENTER	1	1	1	1	3	\$308,000	1996	1	6	130	1,044	516	516
0508	W R BANKS	1	1	1	1	9	\$4,314,940	1945	3	240	653	57,225	32,459	32,459
0512	E B EVANS ANIMAL INDUSTRIES BLDG	1	1	2	1	3	\$2,357,773	1952	2	79	965	27,990	18,609	17,433
0515	TRAINING SCHOOL	8	1	1	1	3	\$2,166,338	1952	1	52	1,857	28,543	26,393	0
0517	A N POINDEXTER VETERINARY CLINIC	1	1	4	1	9	\$163,549	1925	1	13	355	5,740	0	0
0519	SWIMMING POOL	1	1	1	1	6	\$1,870,448	1964	1	19	536	14,080	8,986	8,986
0522	PHYSICAL PLANT WAREHOUSE	4	1	1	1	7	\$222,569	1958	1	13	460	5,130	4,532	4,532
0523	TRANSPORTATION CENTER	4	1	1	1	7	\$301,634	1985	2	18	358	6,864	6,067	5,988
0525	PHYSICAL PLANT SHOP BUILDING	4	1	1	1	7	\$285,674	1985	1	14	482	4,669	3,873	3,873
0529	FRY-THOMAS POWER PLANT	4	1	2	1	3	\$6,770,710	1916	1	8	394	11,430	7,716	7,716
0535	JESSE M DREW MEMORIAL COMPLEX	1	1	1	1	3	\$1,064,024	1955	2	47	398	11,058	9,631	5,803
0537	HILLIARD HALL-COMMUNICATION BLDG	1	1	2	1	9	\$2,737,119	1939	2	101	609	38,346	35,305	32,971
0541	ANDERSON HALL	1	1	2	1	9	\$755,642	1933	3	63	376	16,708	8,079	7,806
0544	EVANS HALL	1	1	1	1	9	\$1,243,961	1928	3	87	483	24,270	12,982	12,982
0556	L O EVANS	1	1	2	1	3	\$543,166	1955	3	23	627	17,460	3,912	2,515
0619	FARM STORAGE SHED	5	1	5	1	7	\$6,923	1951	1	4	204	2,520	0	0
0630	FARM STORAGE	5	1	5	1	7	\$13,437	1980	1	1	176	1,452	0	0
0658	MAY BUILDING - HOME ECONOMICS	1	1	2	1	3	\$1,284,092	1958	1	45	743	20,024	13,974	13,974
0668	M T HARRINGTON SCIENCE BLDG	1	1	2	1	3	\$3,354,690	1961	3	126	553	59,463	16,116	15,592
0669	WM J BILLY NICKS BUILDING	1	1	2	1	4	\$3,778,857	1964	1	42	689	100,768	35,572	19,621
0670	SCIENCE CRITICAL STORAGE	1	1	1	1	3	\$20,765	1961	1	1	80	400	333	333
0674	PHYSICAL PLANT ADMIN BLDG	4	1	1	1	7	\$991,411	1966	1	69	452	11,570	8,466	8,466
0676	BREWER BUILDING - NAVY ROTC	1	1	1	1	7	\$627,575	1972	1	29	424	10,520	7,142	7,142

0682	FARM SHOP	1	1	1	1	7	\$105,682 1973	1	11	302	5,516	0	0
0686	BURLESON-WARE HALL - ARMY ROTC	1	1	1	1	7	\$490,338 1973	1	24	574	11,460	5,457	5,342
0687	HENRIETTA FARRELL HALL	3	1	1	1	6	\$912,583 1973	1	20	585	31,666	18,692	0
0688	OWENS-FRANKLIN HEALTH CLINIC	3	1	1	1	5	\$2,634,645 1977	3	133	606	36,397	22,582	0
0689	HOBART THOMAS TAYLOR SR HALL	1	1	2	1	3	\$4,418,593 1976	2	186	1,202	100,158	55,893	53,157
0702	POLLUTION LABORATORY	1	1	1	1	7	\$10,168 1977	1	2	242	4,030	4,016	1,406
0704	C L WILSON ENGINEERING COMPLEX	1	1	2	1	5	\$2,941,704 1978	2	115	826	63,268	19,851	19,364
0706	TRACK EQUIPMENT STORAGE	3	1	1	1	3	\$103,642 1982	1	2	226	2,136	1,622	0
0707	INTL GOAT RESEARCH CENTER	5	1	1	1	3	\$1,210,182 1983	1	31	409	7,920	5,035	1,760
0708	ENVIRONMENTAL CHAMBERS BUILDING	5	1	1	1	7	\$111,488 1983	1	1	200	2,400	2,350	823
0709	COW DAIRY BUILDING	5	1	3	1	3	\$208,676 1983	1	7	188	1,920	0	0
0710	GOAT DAIRY BUILDING	5	1	2	1	3	\$200,011 1983	1	6	156	1,440	954	334
0712	COW YEARLING BUILDING	5	1	1	1	7	\$53,616 1983	1	2	241	3,200	3,200	1,120
0713	CALF RESEARCH BUILDING	5	1	1	1	7	\$53,616 1983	1	3	261	3,000	2,976	1,041
0714	GOAT REPRODUCTION BUILDING	5	1	1	1	7	\$123,385 1983	1	3	361	4,500	4,497	1,574
0715	GOAT NUTRITION BUILDING	5	1	1	1	7	\$120,346 1983	1	3	361	4,500	4,358	0
0716	GOAT YEARLING BUILDING	5	1	1	1	7	\$137,256 1983	1	3	361	4,500	4,485	1,570
0717	GOAT MATERNITY	5	1	1	1	7	\$112,913 1983	1	3	361	4,500	4,485	1,570
0718	FARM EQUIPMENT STORAGE SHED	5	1	1	1	7	\$31,808 1983	1	1	360	4,500	4,500	1,575
0719	MACHINERY STORAGE	5	1	1	1	7	\$116,488 1983	1	7	361	4,500	4,485	1,569
0720	SANITARY LANDFILL OPERATIONS	4	1	7	1	7	\$120,960 1982	1	6	108	648	0	0
0721	SANITARY LANDFILL STORAGE BUILDING	4	1	7	1	7	\$13,815 1982	1	1	72	315	0	0
0722	SANITARY LANDFILL EQUIPMENT SHED	4	1	7	1	7	\$31,152 1982	1	1	240	2,700	0	0
0723	RADIO TRANSMITTER BUILDING	1	1	1	1	3	\$18,400 1982	1	1	64	240	220	220
0724	AUSTIN GREAUX CHEM ENGR BUILDING	1	1	2	1	5	\$1,408,430 1984	2	23	341	12,934	6,937	6,937
0727	CENTRAL RECEIVING	1	1	1	1	5	\$1,069,074 1985	1	31	882	19,403	8,737	8,737
0728	CONCESSION STAND	3	1	1	1	3	\$11,130 1982	1	1	84	371	337	0
0730	TENNIS COURT RESTROOMS	3	1	2	1	3	\$69,695 1982	1	6	112	759	0	0
0731	STADIUM RESTROOMS MEN	3	1	1	1	3	\$82,222 1982	1	1	130	924	0	0
0732	STADIUM RESTROOMS WOMEN	3	1	1	1	3	\$88,451 1982	1	1	110	732	0	0
0733	SEWAGE PLANT BUILDING	4	1	1	1	7	\$8,640 1975	1	1	200	2,400	2,400	2,400

0734	SEWAGE PLANT CONTROL BUILDING	4	1	1	1	7	\$2,407,201	1994	1	10	270	3,920	3,486	3,486
0737	PRESS BOX WESTSIDE STADIUM	3	1	1	1	1	\$109,724	1983	2	11	120	642	342	0
0739	UTILITIES PLANT ANNEX	4	1	2	1	3	\$4,359,803	1983	1	7	374	10,000	6,570	6,570
0740	CHEMICAL VOLATILE STORAGE	1	1	1	1	3	\$9,703	1984	1	1	48	144	144	144
0741	JOHNSON-PHILLIP ALL FAITHS CHAPEL	1	1	2	1	4	\$858,582	1986	1	13	438	6,223	4,306	0
0742	WILHELMINA DELCO BUILDING	1	1	2	1	4	\$4,384,240	1986	3	152	678	58,422	36,334	35,757
0743	SAM R COLLINS ENGR TECH BUILDING	1	1	1	1	4	\$5,088,640	1987	3	146	1,003	78,945	46,496	45,032
0744	JOHN B COLEMAN LIBRARY	1	1	2	1	5	\$14,573,780	1988	5	172	1,231	149,095	92,573	84,422
0745	AGRICULTURE RESEARCH LAB	1	1	1	1	4	\$3,293,344	1988	1	128	803	35,118	22,222	7,638
0746	CALF AND HAY BARN	5	1	1	1	7	\$118,100	1988	1	6	180	1,800	1,389	486
0747	SWINE FARROWING BUILDING	5	1	2	1	7	\$96,700	1988	1	3	134	1,050	943	330
0748	SWINE FINISHING BUILDING	5	1	2	1	7	\$103,600	1988	1	3	360	4,500	1,366	478
0749	NEW LAYING HOUSE	5	1	1	1	7	\$141,400	1988	1	3	276	3,300	3,189	1,116
0750	TURKEY HOUSE BLDG	5	1	1	1	7	\$132,300	1988	1	4	228	2,250	2,225	778
0751	PULLET BROILER BLDG	5	1	1	1	7	\$160,400	1988	1	3	300	3,600	3,276	1,146
0752	OFFICE/LAB PROCESSING BUILDING	5	1	2	1	7	\$570,200	1988	1	23	354	6,109	3,207	1,121
0753	FEED MILL BUILDING	5	1	1	1	7	\$186,608	1988	1	3	200	2,400	2,323	813
0754	HEAD HOUSE	5	1	1	1	7	\$82,400	1988	1	10	263	2,620	1,255	439
0755	NEW GREEN HOUSE ONE	5	1	2	1	7	\$143,620	1988	1	1	145	1,260	1,217	426
0756	NEW GREEN HOUSE TWO	5	1	2	1	7	\$143,639	1988	1	1	145	1,260	1,207	422
0757	SWINE GESTATION BLDG	5	1	1	1	7	\$67,400	1988	1	1	150	1,400	1,400	490
0758	NEW INSTRUCTIONAL GYM	1	1	2	1	5	\$2,679,991	1988	1	28	944	45,700	29,318	29,318
0760	INTRAMURAL EQUIPMENT ISSUE BLDG	3	1	1	1	3	\$80,000	1988	1	7	146	1,296	1,166	0
0761	NEW COOPERATIVE EXTENSION BUILDING	1	1	1	1	4	\$2,035,174	1992	1	77	852	23,000	13,000	0
0763	CHEMICAL STORAGE - WASTE WATER	4	1	1	1	3	\$27,709	1986	1	3	62	198	168	168
0764	CHEMICAL STORAGE - POWER PLANT	4	1	1	1	3	\$27,709	1986	1	3	62	198	168	168
0768	PORT ARTHUR STILWELL TECH CENTER	1	3	1	5	5	\$1	1996	1	1	106	690	690	690
0774	GRADUATE NORTH WEST CAMPUS	1	3	1	4	4	\$190,542	1988	1	41	544	10,784	9,664	9,664
0775	STUDENT PARK RESTROOMS MEN/WOMEN S	3	1	1	1	3	\$36,177	1998	1	3	102	650	0	0
0779	MEMORIAL STUDENT CENTER	3	1	1	2	5	\$26,000,000	2003	3	140	1,204	126,083	79,363	8,268

0780	SOLAR RESTROOMS MEN/WOMEN S	1	1	1	1	6	\$169,257	1998	1	4	114	821	326	326
0783	ARCHITECTURE BUILDING	1	1	1	2	3	\$23,321,819	2005	3	174	1,358	103,421	57,475	57,475
0784	COOPERATIVE EQUIPMENT BARN	5	1	1	1	7	\$204,442	1999	1	2	400	9,375	9,258	9,258
0785	4-H CAMP DINNING HALL	8	3	2	5	3	\$242,062	1972	1	7	262	4,522	4,514	0
0790	NEW SCIENCE BUILDING	1	1	1	2	4	\$27,199,948	2001	4	206	1,514	166,629	96,343	95,697
0791	UNIVERSITY CENTER - WOODLANDS	1	3	1	4	4	\$12,788	1996	3	2	160	1,587	1,587	1,587
0793	NEW ELECTRICAL ENGINEERING BLDG	1	1	1	2	5	\$11,665,967	2005	3	103	657	48,787	28,163	27,728
0799	NEW HEAT EXCHANGER BLDG	4	1	1	1	4	\$587,043	2000	1	0	134	1,120	0	0
0800	PUMP ROOM WATER TOWER	4	1	1	1	3	\$263,150	2000	1	1	104	900	847	847
0805	PAUL QUINN COLLEGE - PRICE BRANCH B	1	3	1	5	5	\$6,250	2002	3	2	224	3,345	3,345	3,345
0806	PAUL QUINN COLLEGE - SCIENCE BUILDI	1	3	1	5	5	\$6,250	2002	3	3	252	3,992	3,992	3,992
0809	AMERGY BANK BLDG	1	3	1	4	5	\$886,673	2002	3	124	752	45,452	43,563	39,729
0810	PVAMU C. NURS. IN HUNTSVILLE	1	3	1	4	5	\$1	2002	2	3	112	814	814	814
0815	URBAN LEAGUE OF GREATER DALLAS	1	3	1	4	4	\$3,000	1999	1	3	244	3,739	3,738	3,738
0816	RADIO TRANSMITTER TWO	1	1	1	1	3	\$12,600	1993	1	1	88	420	413	0
0817	WATER TOWER ADMIN BLDG	4	1	1	1	7	\$4,000	2000	1	1	64	252	0	0
0818	SWIMMING POOL CHEMICAL SHED	1	1	1	1	3	\$7,268	1964	1	1	48	140	121	121
0819	4-H PAVILION	8	3	2	5	3	\$264,096	1972	1	4	275	4,735	4,735	0
0820	4-H INFIRMARY/NURSES BLDG	8	3	2	5	3	\$24,034	1972	1	6	82	419	401	0
0821	4-H CABIN#1	8	3	2	5	3	\$97,569	1972	1	4	168	1,741	1,741	0
0822	4-H CABIN #2	8	3	2	5	3	\$114,465	1972	1	6	180	2,135	2,132	0
0823	4-H STORAGE HOUSE	8	3	2	5	3	\$42,490	1972	1	2	110	766	766	0
0824	4-H WELL HOUSE #1	8	3	2	5	3	\$1,289	1972	1	1	26	40	0	0
0825	4-H WELL HOUSE #2	8	3	2	5	3	\$1,289	1972	1	1	26	40	0	0
0826	4-H METAL FOOD STORAGE SHED	8	3	2	5	3	\$13,733	1972	1	1	64	240	240	0
0827	4-H CAMP DIRECTOR S HOUSE	8	3	2	5	3	\$41,346	1972	1	10	110	749	728	0
0828	4-H STORAGE HOUSE #2	8	3	2	5	3	\$5,722	1972	1	2	38	92	91	0
0829	4-H CABIN #3	8	3	2	5	3	\$105,821	1972	1	7	154	1,477	1,053	0
0830	4-H CABIN #4	8	3	2	5	3	\$94,136	1972	1	4	166	1,890	1,869	0
0831	4-H CABIN #5	8	3	2	5	3	\$96,425	1972	1	4	168	1,742	1,701	0
TOTALS (117 Buildings)							\$194,282,456		3,617		1,873,591	1,117,826	833,363	

Search Again