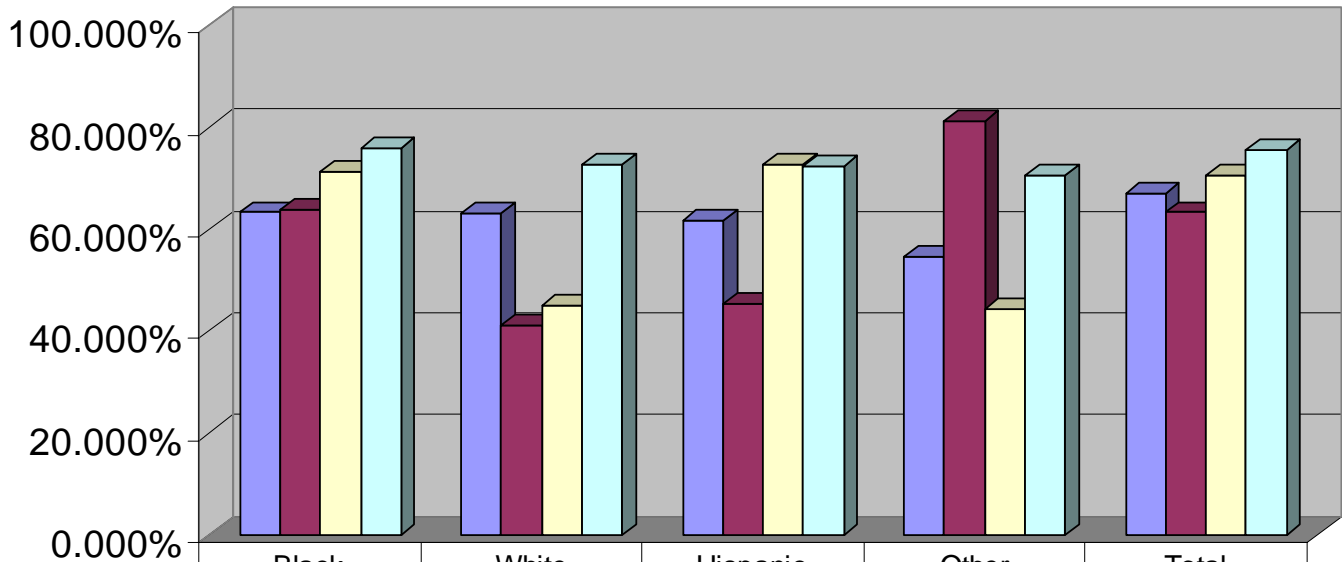


# Legislative Budget Board (LBB) Performance Measures

# One-Year Retention Rate

**Prairie View A&M University  
Persistence Rates (LBB), Fall 2004-Fall 2007  
All FTFT**



	Black	White	Hispanic	Other	Total
049 Persistence Rate	63.350%	63.160%	61.760%	54.550%	67.088%
059 Persistence Rate	63.924%	41.176%	45.455%	81.250%	63.345%
069 Persistence Rate	71.339%	45.000%	72.727%	44.444%	70.723%
079 Persistence Rate	75.931%	72.727%	72.340%	70.588%	75.700%

# Six-Year Graduation Rate

